



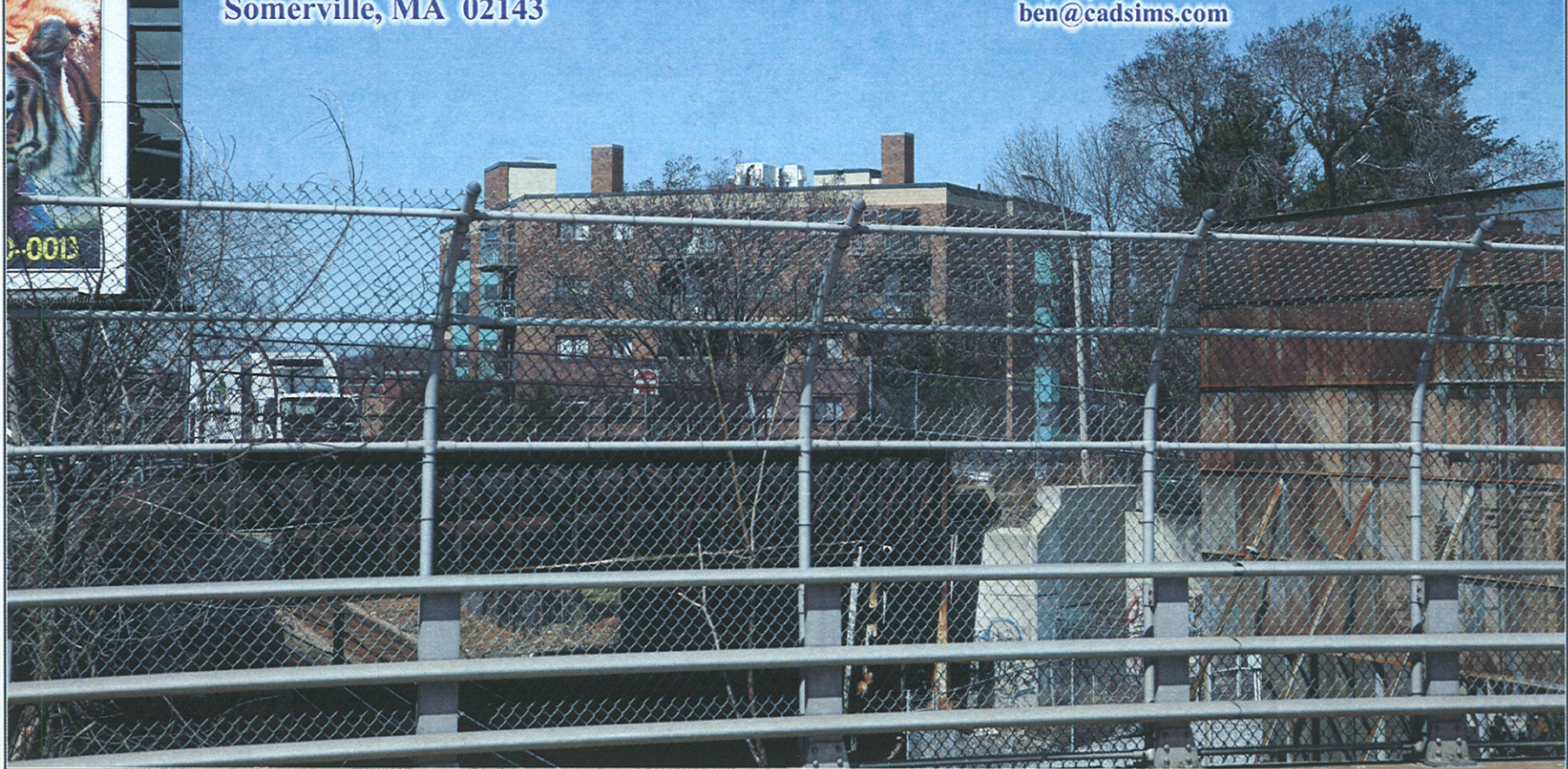
RECEIVED  
S.P.C.D. AND  
PLANNING DEPT.



Prepared For:  
**AT&T Mobility**  
Site Name:  
**Webster Court ~ 2242**  
Site Address:  
**25 Webster Avenue  
Somerville, MA 02143**

2011 APR 27 PM 5:16


Prepared By:  
**Caron & Associates Design LLC**  
Benjamin E. Caron  
301 Concord Street  
Haverhill, MA 01830  
(978) 360-3671  
ben@cadsim.com



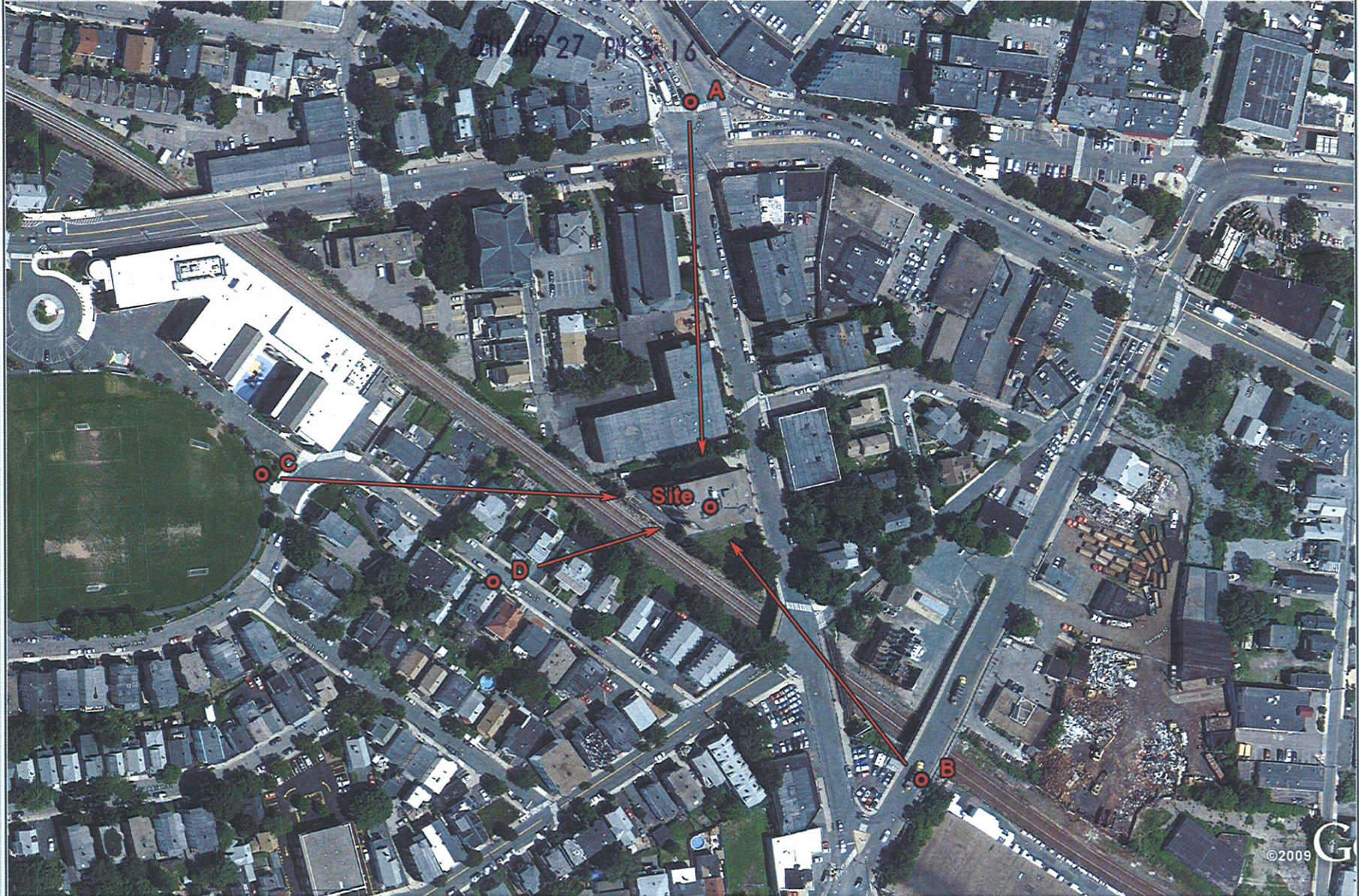
For visual reference only. Actual visibility is dependent upon weather conditions, season, sunlight, and viewer location.

Based upon Rev2 Submittal Dwg's  
by Dewberry Dated: 04/26/2011

**Webster Court ~ 2242**  
Photographic Renderings ~ 04/26/2011

Created By: Benjamin E. Caron  
 Caron & Associates Design LLC  
Tel: (978) 360-3671 info@cadsim.com





For visual reference only. Actual visibility is dependent upon weather conditions, season, sunlight, and viewer location.

**Webster Court ~ 2242**  
Photo Location Map ~ 04/26/2011

Created By: Benjamin E. Caron  
Caron & Associates Design LLC  
Tel: (978) 360-3671 info@cadsim.com



2011 APR 27 PM 5:16



For visual reference only. Actual visibility is dependent upon weather conditions, season, sunlight, and viewer location.

*Based upon Rev2 Submittal Drawings  
by Dewberry Dated: 04/26/2011*

**Webster Court ~ 2242**  
Photo Location A ~ 65mm ~ 486' +/- Away ~ 04/26/2011

Created By: Benjamin E. Caron  
**Caron & Associates Design LLC**  
Tel: (978) 360-3671 info@cadsim.com



2011 APR 27 PM 5:16



For visual reference only. Actual visibility is dependent upon weather conditions, season, sunlight, and viewer location.

Based upon Rev2 Submittal Drawings  
by Dewberry Dated: 04/26/2011

**Webster Court ~ 2242**  
Photo Location A ~ 65mm ~ 486' +/- Away ~ 04/26/2011

Created By: Benjamin E. Caron  
**CAD** Caron & Associates Design LLC  
Tel: (978) 360-3671 info@cadsim.com



2011 APR 27 PM 5:16



For visual reference only. Actual visibility is dependent upon weather conditions, season, sunlight, and viewer location.

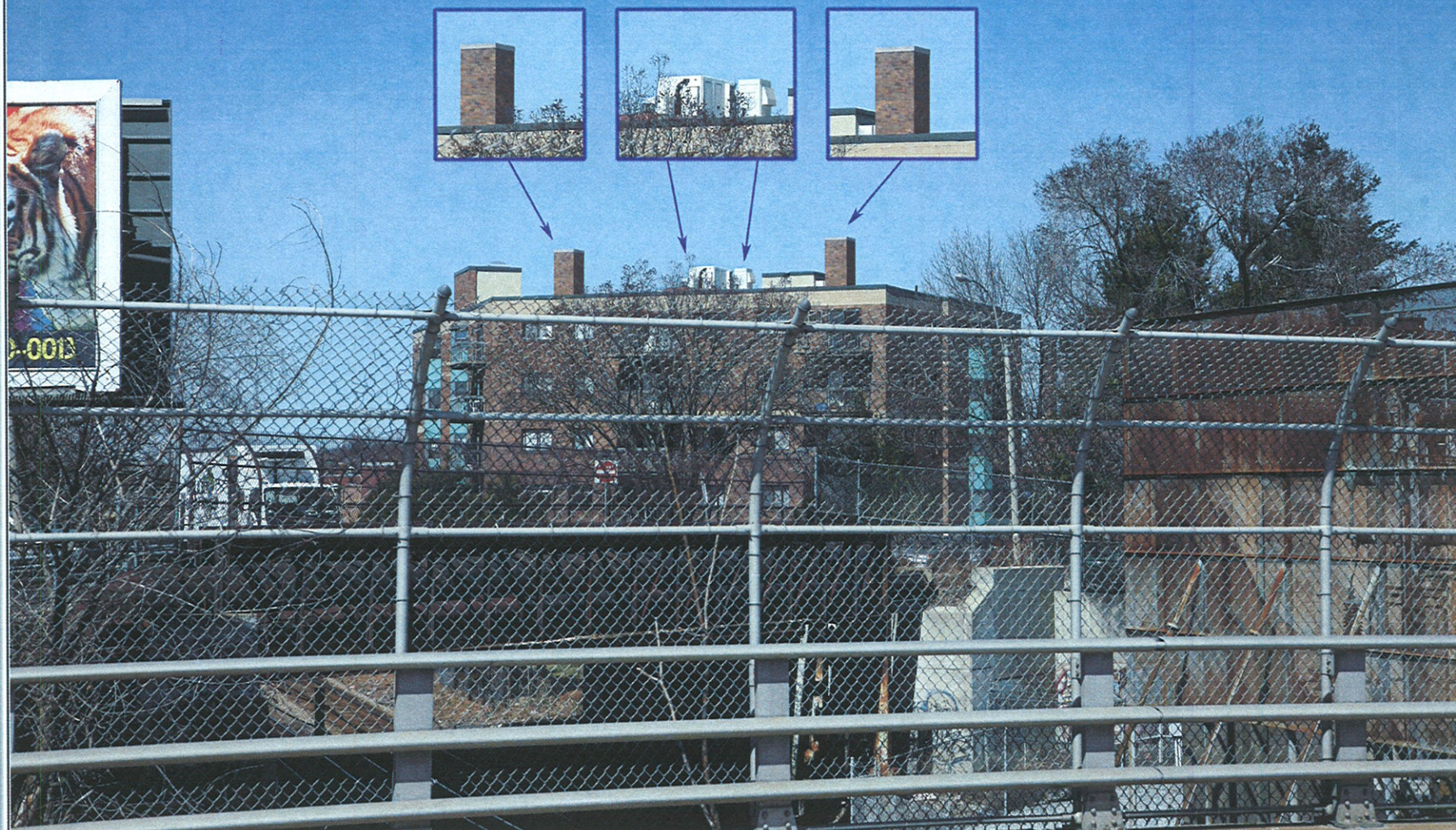
Based upon Rev2 Submittal Drawings  
by Dewberry Dated: 04/26/2011

**Webster Court ~ 2242**  
Photo Location B ~ 65mm ~ 427' +/- Away ~ 04/26/2011

Created By: Benjamin E. Caron  
**CAD** Caron & Associates Design LLC  
Tel: (978) 360-3671 info@cadsim.com




2011 APR 27 PM 5:16



For visual reference only. Actual visibility is dependent upon weather conditions, season, sunlight, and viewer location.

Based upon Rev2 Submittal Dwg's  
by Dewberry Dated: 04/26/2011

**Webster Court ~ 2242**  
Photo Location B ~ 65mm ~ 427'+/- Away ~ 04/26/2011

Created By: Benjamin E. Caron  
 Caron & Associates Design LLC  
Tel: (978) 360-3671 info@cadsim.com



2011 APR 27 PM 5:16



For visual reference only. Actual visibility is dependent upon weather conditions, season, sunlight, and viewer location.

Based upon Rev2 Submittal Drawings  
by Dewberry Dated: 04/26/2011

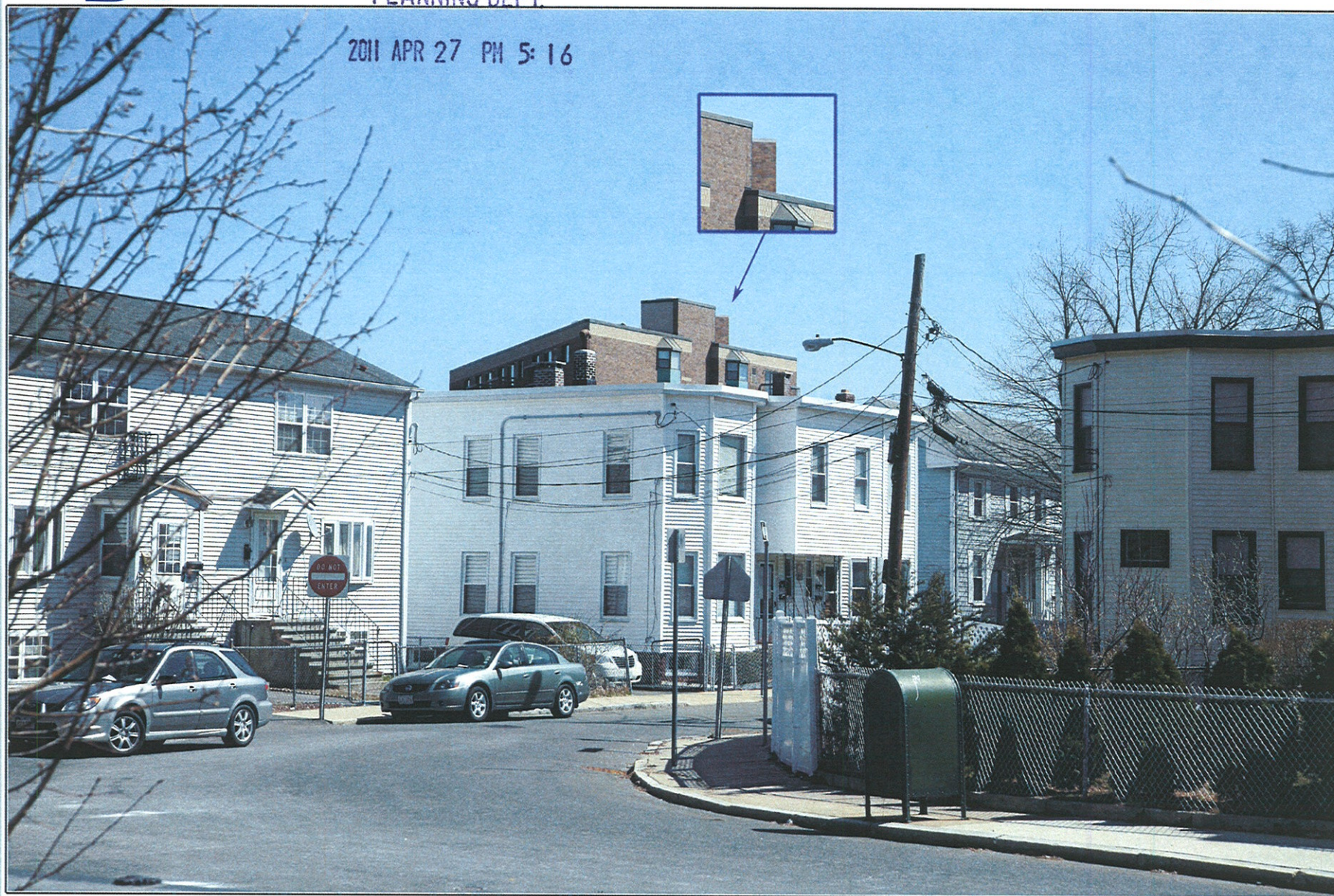
## Webster Court ~ 2242

Photo Location C ~ 65mm ~ 491' +/- Away ~ 04/26/2011

Created By: Benjamin E. Caron  
**CAD** Caron & Associates Design LLC  
Tel: (978) 360-3671 info@cadsim.com



2011 APR 27 PM 5:16



For visual reference only. Actual visibility is dependent upon weather conditions, season, sunlight, and viewer location.

Based upon Rev2 Submittal Drawings  
by Dewberry Dated: 04/26/2011

**Webster Court ~ 2242**  
Photo Location C ~ 65mm ~ 491' +/- Away ~ 04/26/2011

Created By: Benjamin E. Caron  
**Caron & Associates Design LLC**  
Tel: (978) 360-3671 info@cadsim.com





For visual reference only. Actual visibility is dependent upon weather conditions, season, sunlight, and viewer location.

Based upon Rev2 Submittal Dwg's  
by Dewberry Dated: 04/26/2011

**Webster Court ~ 2242**  
Photo Location D ~ 50mm ~ 238'+/- Away ~ 04/26/2011

Created By: Benjamin E. Caron  
**CAD** Caron & Associates Design LLC  
Tel: (978) 360-3671 info@cadsim.com





RECEIVED  
S.P.C.D. AND  
PLANNING DEPT.

Proposed  
Conditions




2011 APR 27 PM 5:16



For visual reference only. Actual visibility is dependent upon weather conditions, season, sunlight, and viewer location.

Based upon Rev2 Submittal Dwg's  
by Dewberry Dated: 04/26/2011

**Webster Court ~ 2242**  
Photo Location D ~ 50mm ~ 238'+/- Away ~ 04/26/2011

Created By: Benjamin E. Caron  
 Caron & Associates Design LLC  
Tel: (978) 360-3671 info@cadsim.com