

1 Proposed Front
1/4" = 1'-0"

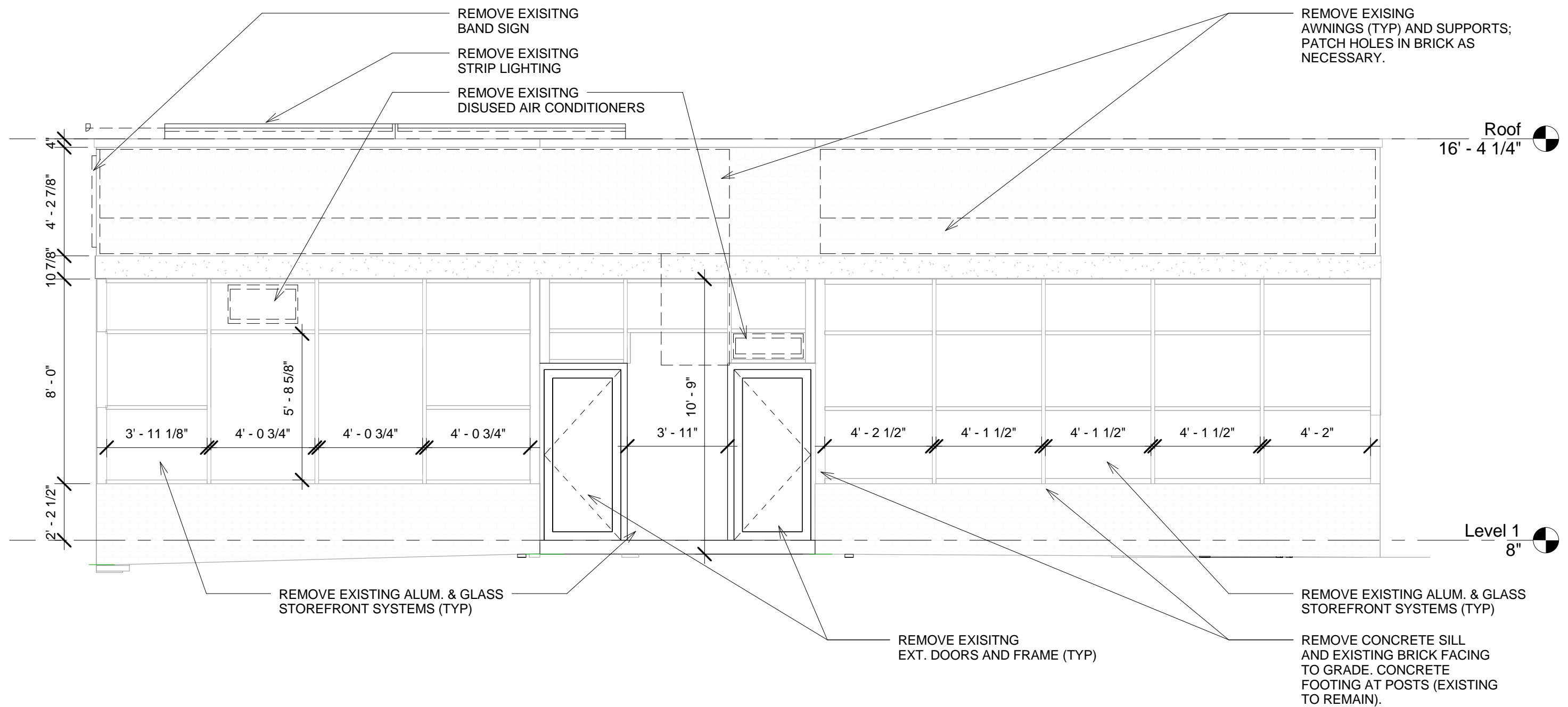
DEREK RUBINOFF ARCHITECT
101 Lasell Street, West Roxbury, MA 02132-3135 617-504-2599 drubinoff@derekubinoff.com

Proposed Front Elevation

102-104 Broadway
Somerville, MA 02145

JOB #:	1443
SCALE:	1/4" = 1'-0"
DATE:	9/18/2014
DWN BY:	Author
CROSS REF:	

SKD-1



1 Demolition Front
1/4" = 1'-0"

DEREK RUBINOFF ARCHITECT

101 Lasell Street, West Roxbury, MA 02132-3135 617-504-2599 drubinoff@derekubinoff.com

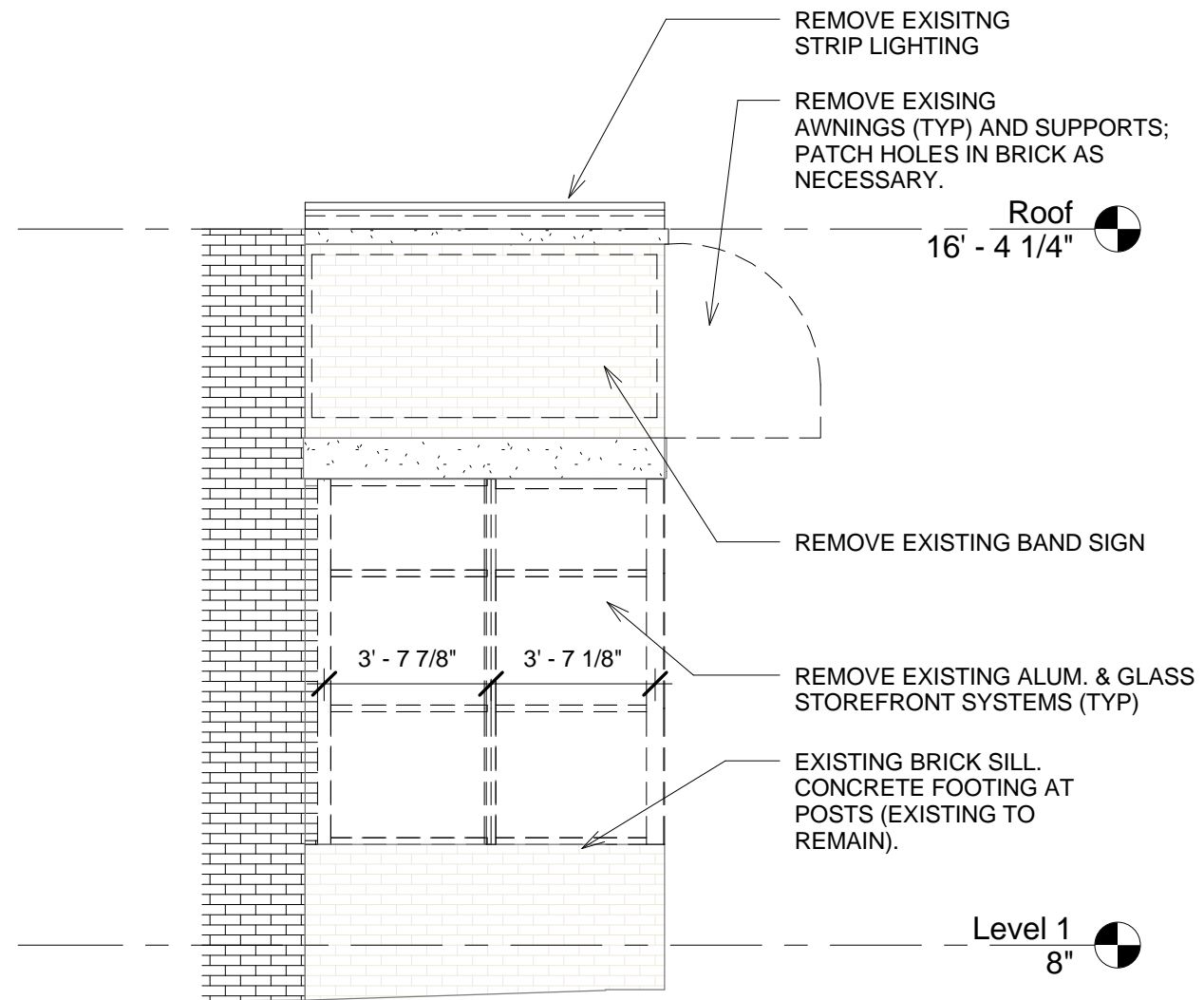
Proposed Demolition

102-104 Broadway

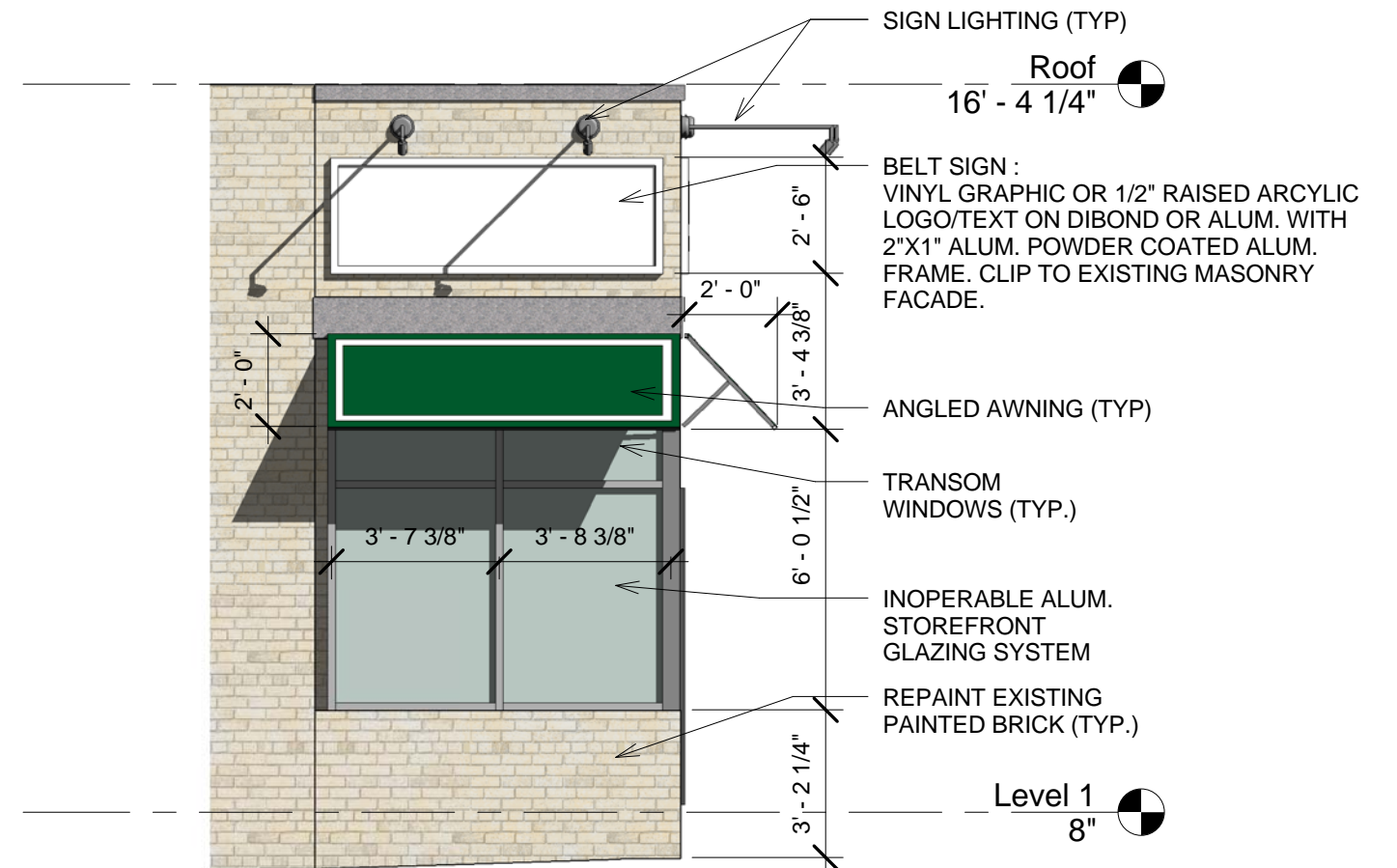
102-104 Broadway
Somerville, MA 02145

JOB #: 1443
SCALE: 1/4" = 1'-0"
DATE: 9/18/2014
DWN BY: Author
CROSS REF:

SKD-2



2 West Demolition Plan
1/4" = 1'-0"



1 West Proposed
1/4" = 1'-0"