

Federal Realty
INVESTMENT TRUST

owner:
FEDERAL REALTY INVESTMENT TRUST
ASSEMBLY ROW
5 MIDDLESEX AVENUE, 4TH FLOOR
SOMERVILLE MA 02145
PHONE: (617) 684-1508

Project Architect:
D'AGOSTINO IZZO QUIRK ARCHITECTS, Inc.
1310 BROADWAY
SOMERVILLE, MA 02144
PHONE: (617) 623-3000

Structural Engineer:
McNAMARA SALVIA, Inc.
160 FEDERAL STREET
BOSTON MA 02110
PHONE: (617) 737-0040

Mechanical Engineer:
WSP FLACK & KURTZ
88 BLACK FALCON AVENUE,
SUITE 210
BOSTON MA 02110
PHONE: (617) 210-1600

Specifications
WIL-SPEC
15 POST OFFICE
SQUARE
LYNNFIELD MA 01940
PHONE: (781) 598-6789

STAMP

REVISIONS

DATE	ISSUED FOR
30 JUNE 2016	BID SET
DD MON 2016	REVISION 1

LINEAR PARK BUILDINGS: BUILDING A

DRAWING TITLE
FIRST FLOOR PLAN

SCALE
1/8" = 1'-0"

DRAWN BY
CMD

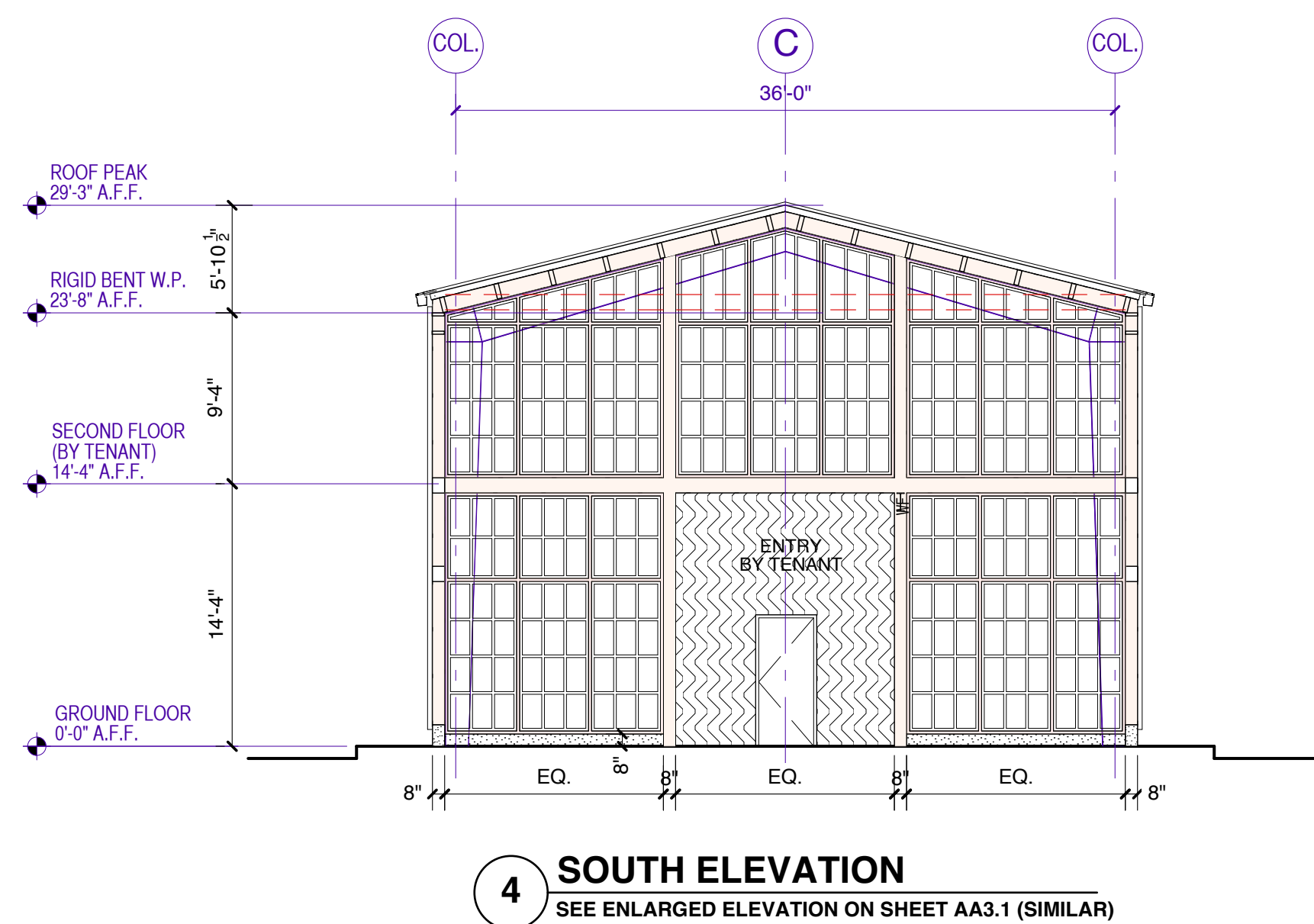
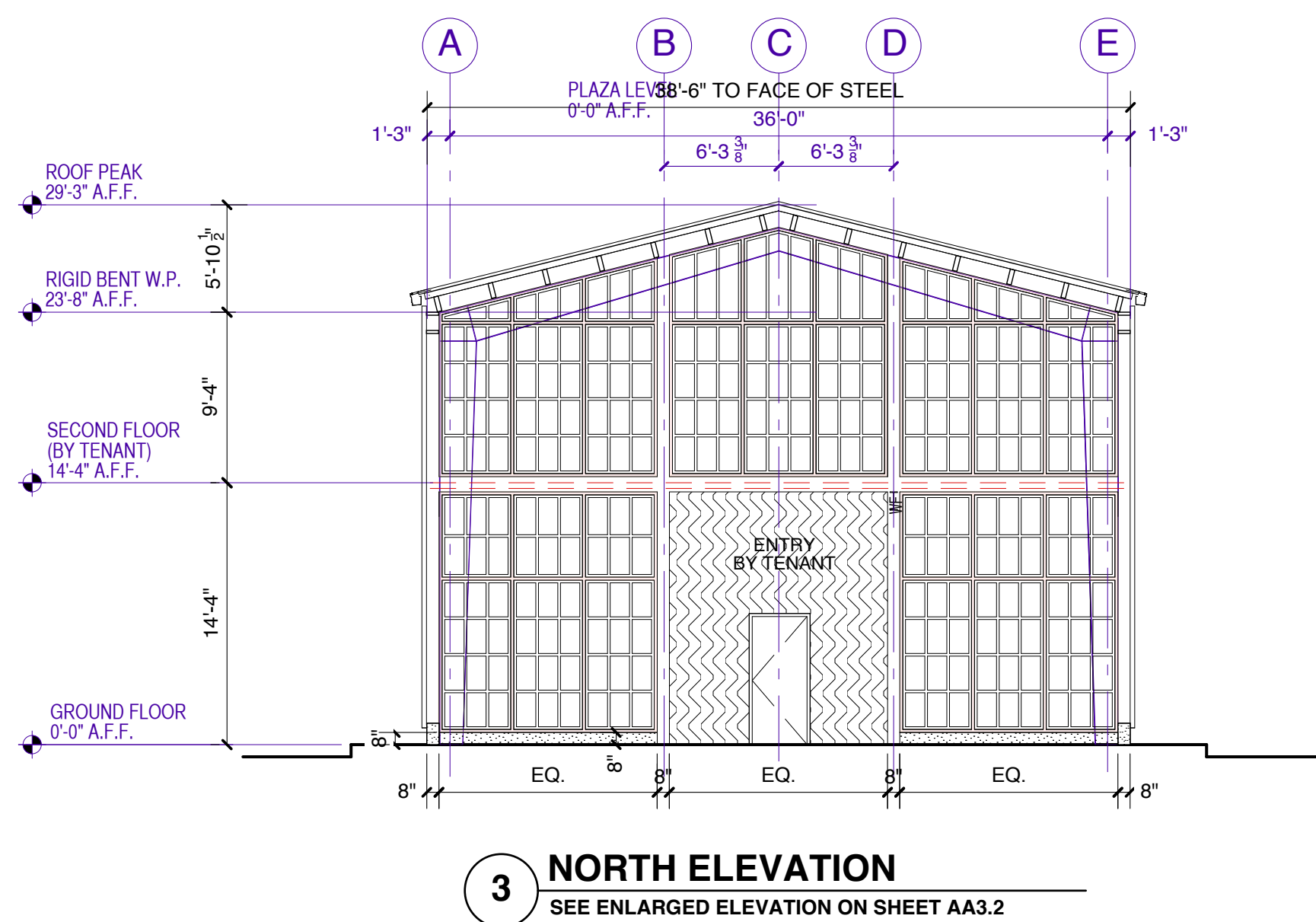
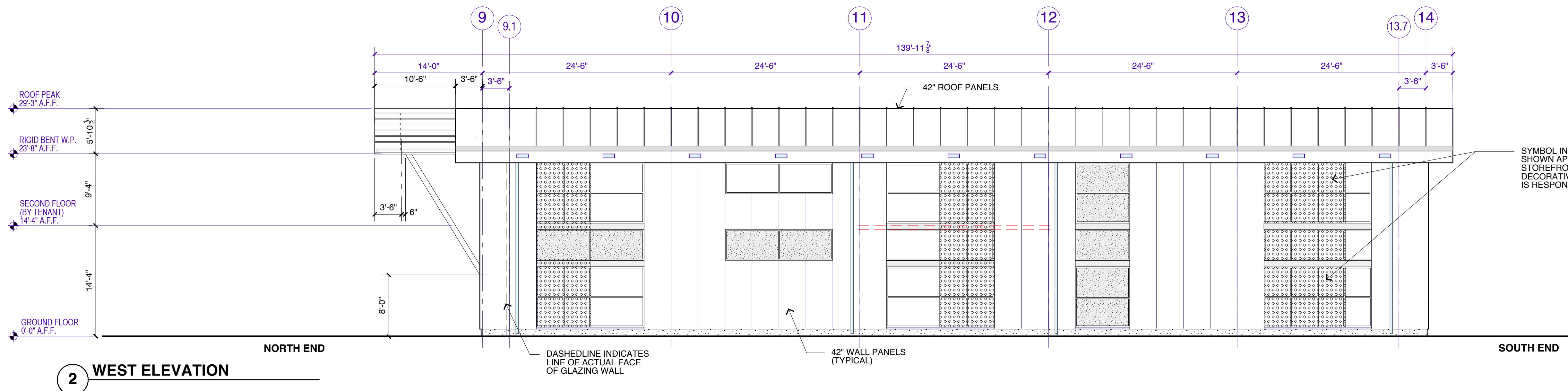
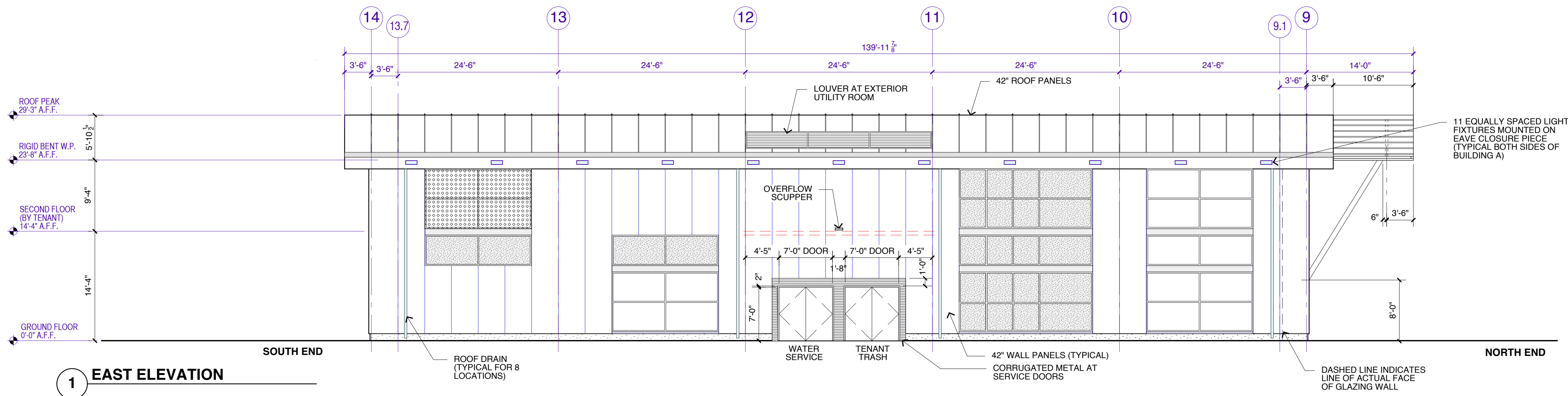
DATE
30 JUNE 2016

JOB NUMBER
15008

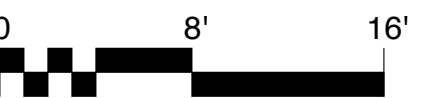
DRAWING NUMBER

AA1.1

15008 AA1.123-Plans/PCP/PCB



NOTE: SEE SHEET AA4.2 FOR WINDOW DETAILS



Federal Realty
INVESTMENT TRUST

owner:
FEDERAL REALTY INVESTMENT TRUST
ASSEMBLY ROW
5 MIDDLESEX AVENUE, 4TH FLOOR
SOMERVILLE MA 02145
PHONE: (617) 684-1508

Project Architect:
D'AGOSTINO IZZO QUIRK ARCHITECTS, Inc.
1310 BROADWAY
SOMERVILLE, MA 02144
PHONE: (617) 623-3000

Structural Engineer:
McNAMARA SALVIA, Inc.
160 FEDERAL STREET
BOSTON MA 02110
PHONE: (617) 737-0040

Mechanical Engineer:
WSP FLACK & KURTZ
88 BLACK FALCON AVENUE,
SUITE 210
BOSTON MA 02110
PHONE: (617) 210-1600

Specifications
WIL-SPEC
15 POST OFFICE
SQUARE
LYNNFIELD MA 01940
PHONE: (781) 598-6789

STAMP

REVISIONS

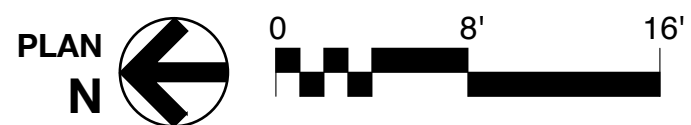
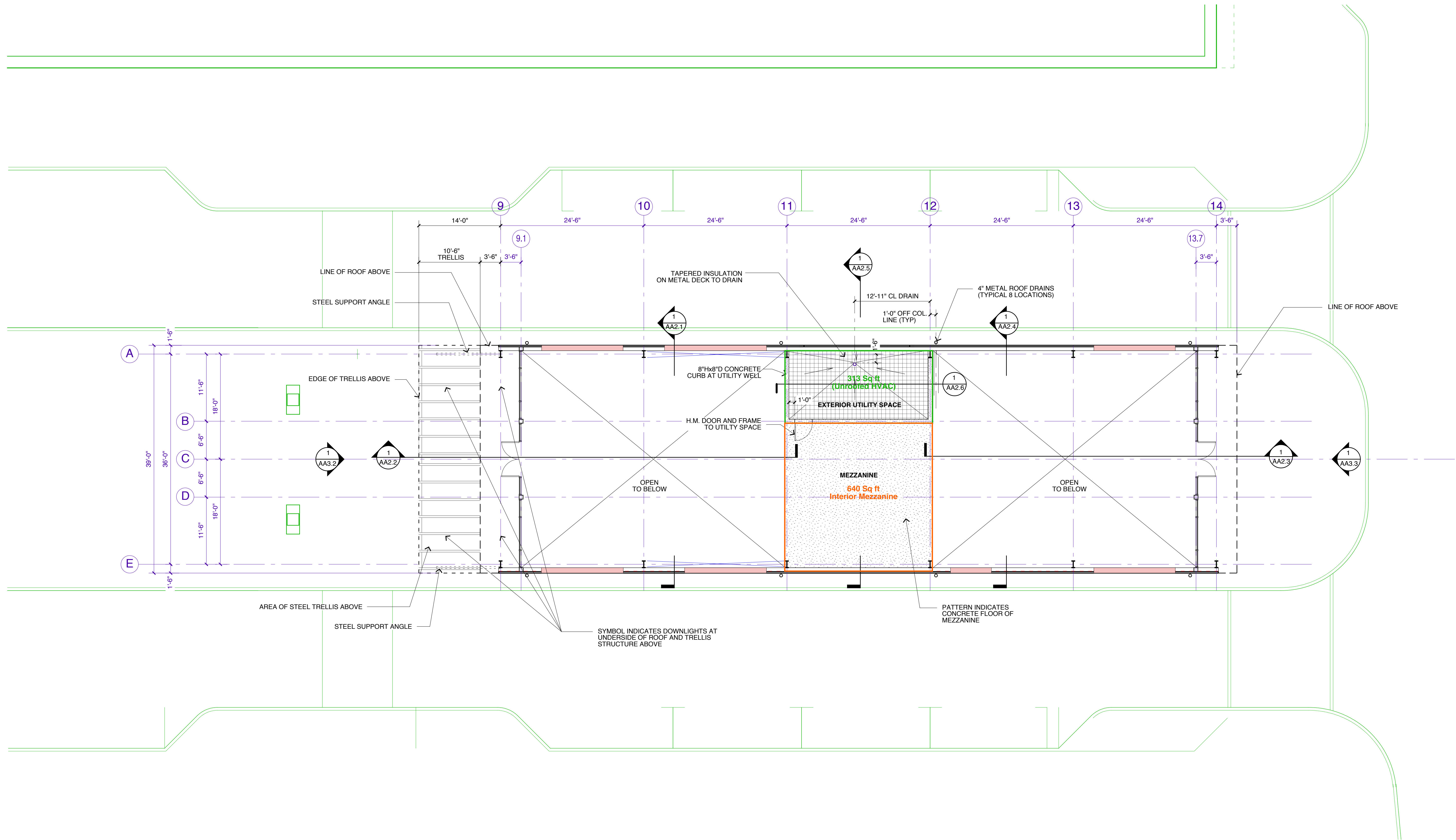
DATE	ISSUED FOR
30 JUNE 2016	BID SET

LINEAR PARK BUILDINGS: BUILDING A
DRAWING TITLE
EXTERIOR ELEVATIONS

SCALE	DRAWN BY	DATE	JOB NUMBER
1/8" = 1'-0"	CMD	30 JUNE 2016	15008

DRAWING NUMBER

AA3.1



Federal Realty
INVESTMENT TRUST

owner:
FEDERAL REALTY INVESTMENT TRUST
ASSEMBLY ROW
5 MIDDLESEX AVENUE, 4TH FLOOR
SOMERVILLE MA 02145
PHONE: (617) 684-1508

Project Architect:
D'AGOSTINO IZZO QUIRK ARCHITECTS, Inc.
1310 BROADWAY
SOMERVILLE, MA 02144
PHONE: (617) 623-3000

Structural Engineer:
McNAMARA SALVIA, Inc.
160 FEDERAL STREET
BOSTON MA 02110
PHONE: (617) 737-0040

Mechanical Engineer:
WSP FLACK & KURTZ
88 BLACK FALCON AVENUE,
SUITE 210
BOSTON MA 02110
PHONE: (617) 210-1600

Specifications
WIL-SPEC
15 POST OFFICE
SQUARE
LYNNFIELD MA 01940
PHONE: (781) 598-6789

STAMP

REVISIONS

DATE	ISSUED FOR
30 JUNE 2016	BID SET
DD MON 2016	REVISION 1

LINEAR PARK BUILDINGS: BUILDING A

DRAWING TITLE

MEZZANINE FLOOR PLAN

SCALE
1/8" = 1'-0"

DRAWN BY
CMD

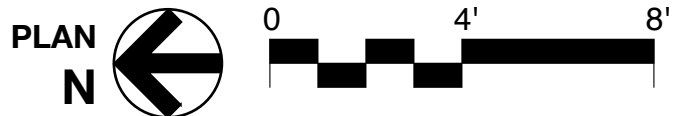
DATE
30 JUNE 2016

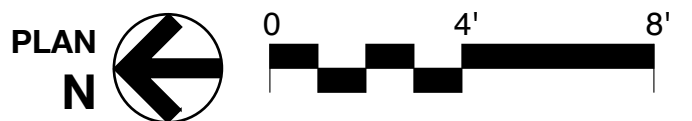
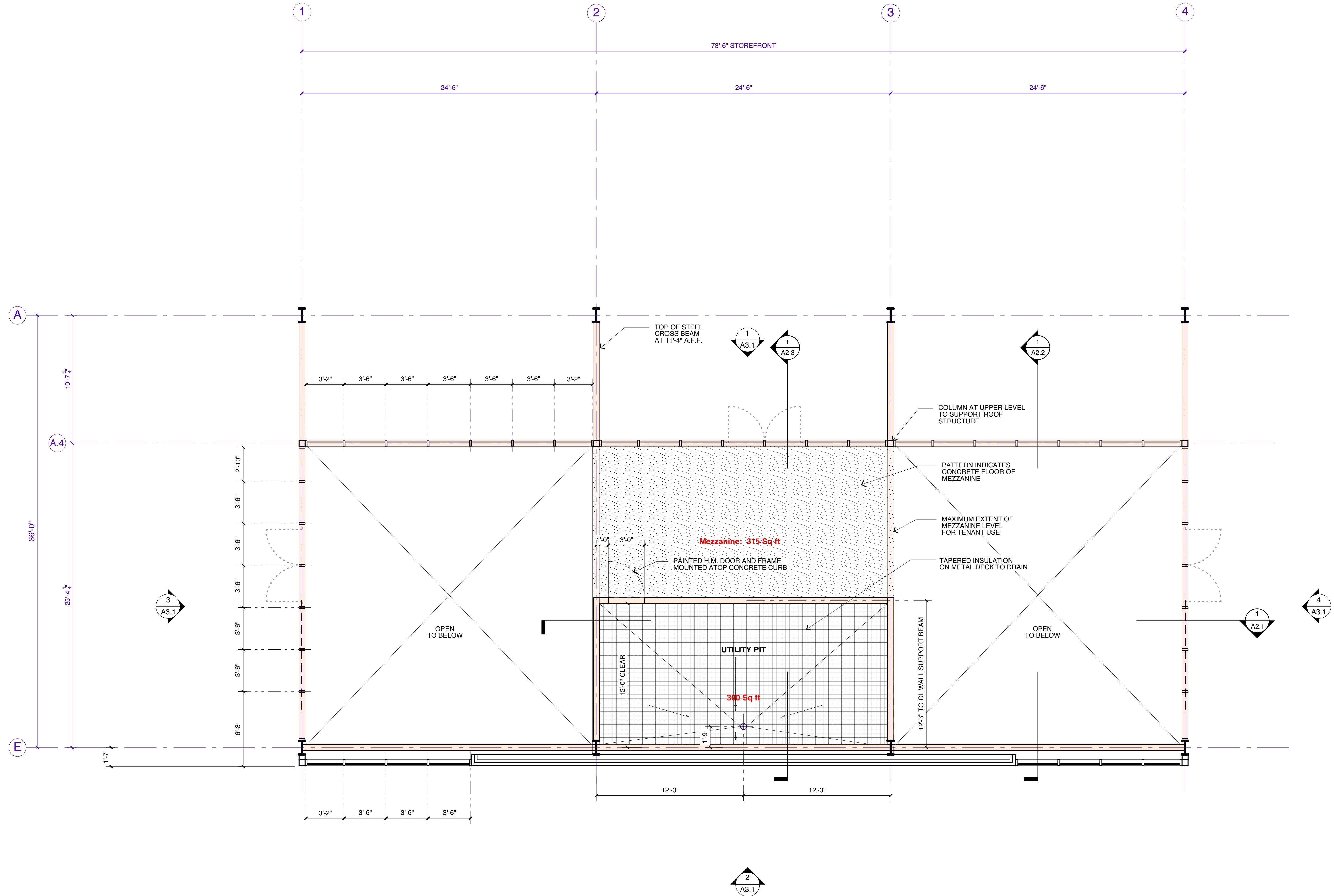
JOB NUMBER
15008

DRAWING NUMBER

AA1.2

15008 AA1.123-Plans/PCP/PCB





Federal Realty
INVESTMENT TRUST

owner:
FEDERAL REALTY INVESTMENT TRUST
ASSEMBLY ROW
5 MIDDLESEX AVENUE, 4TH FLOOR
SOMERVILLE MA 02145
PHONE: (617) 684-1508

Project Architect:
D'AGOSTINO IZZO QUIRK ARCHITECTS, Inc.
1310 BROADWAY
SOMERVILLE, MA 02144
PHONE: (617) 623-3000

Structural Engineer:
McNAMARA SALVIA, Inc.
160 FEDERAL STREET
BOSTON MA 02110
PHONE: (617) 737-0040

Mechanical Engineer:
WSP FLACK & KURTZ
88 BLACK FALCON AVENUE,
SUITE 210
BOSTON MA 02110
PHONE: (617) 210-1600

Specifications
WIL-SPEC
15 POST OFFICE
SQUARE
LYNNFIELD MA 01940
PHONE: (781) 598-6789

STAMP

REVISIONS

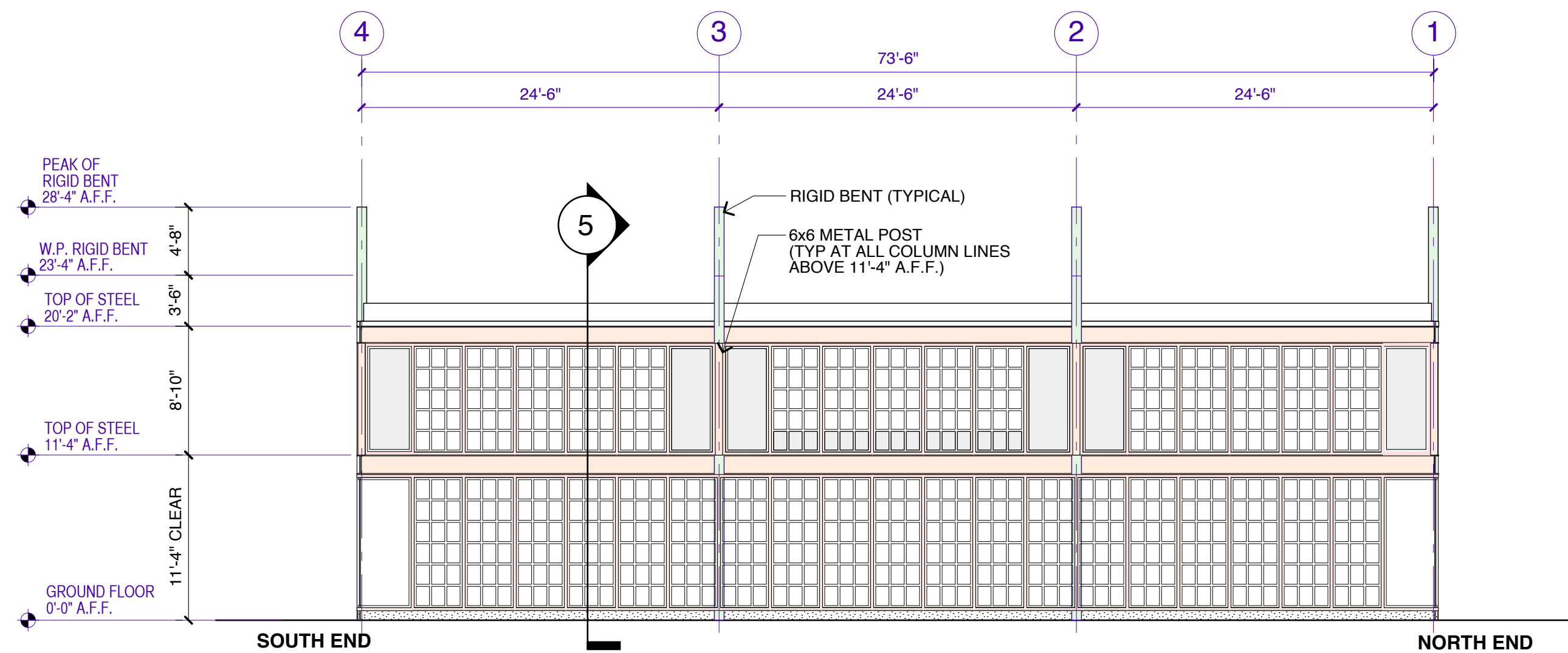
DATE	ISSUED FOR
30 JUNE 2016	BID SET
8 JULY 2016	REVISION 1

LINEAR PARK BUILDINGS: BUILDING B
DRAWING TITLE
MEZZANINE LEVEL PLAN

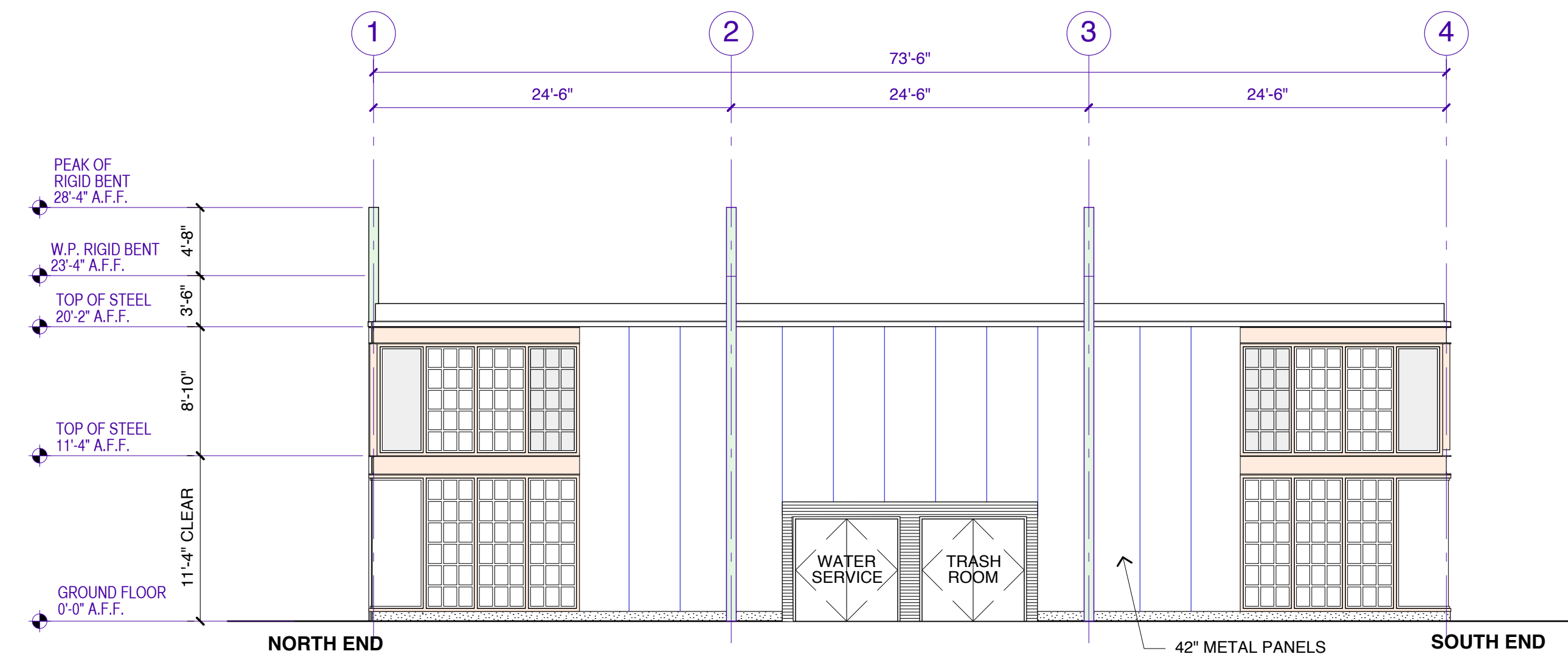
SCALE 1/4" = 1'-0"	DRAWN BY CMD	DATE 30 JUNE 2016	JOB NUMBER 15008
-----------------------	------------------------	-----------------------------	----------------------------

DRAWING NUMBER

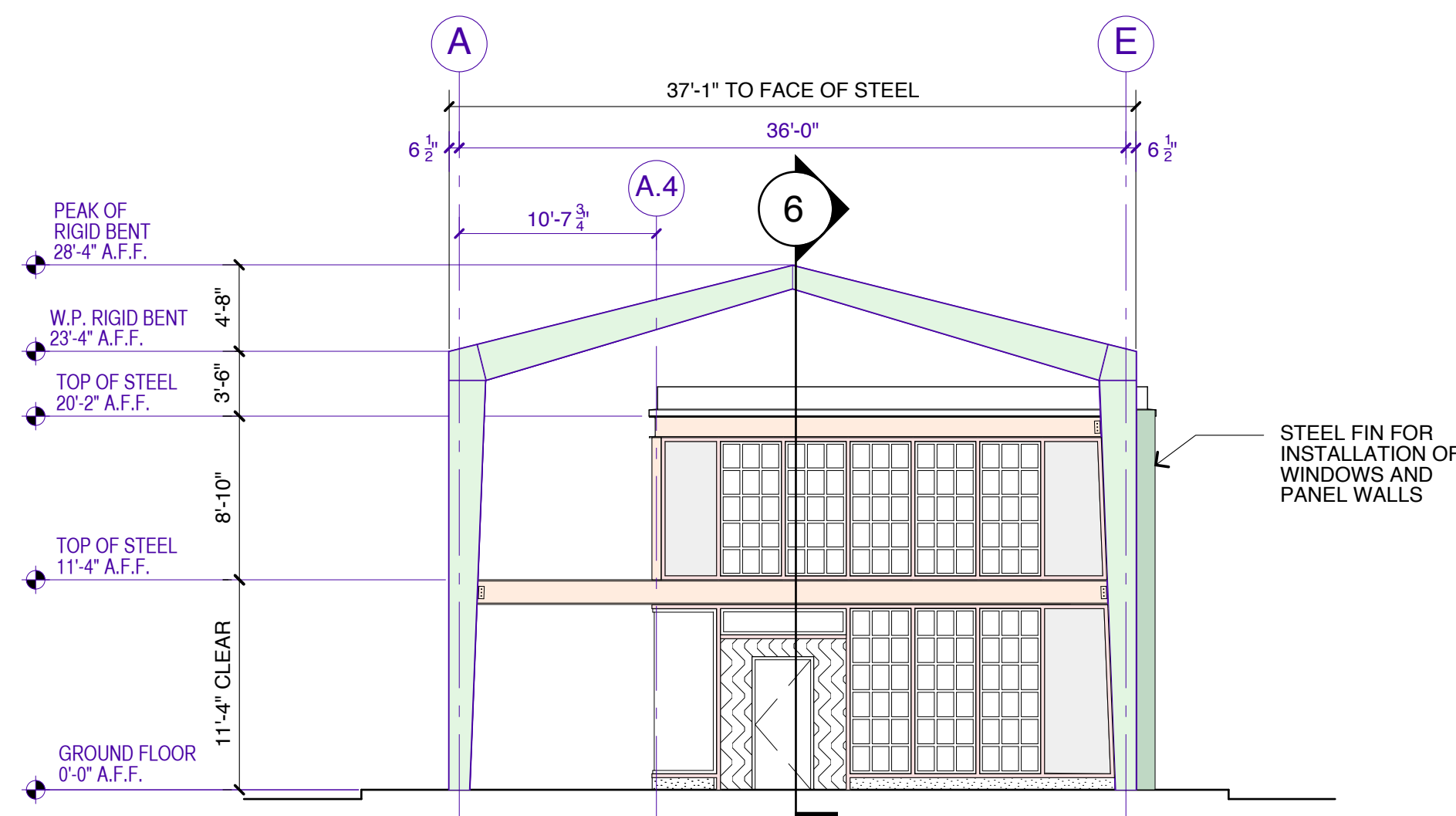
BA1.2



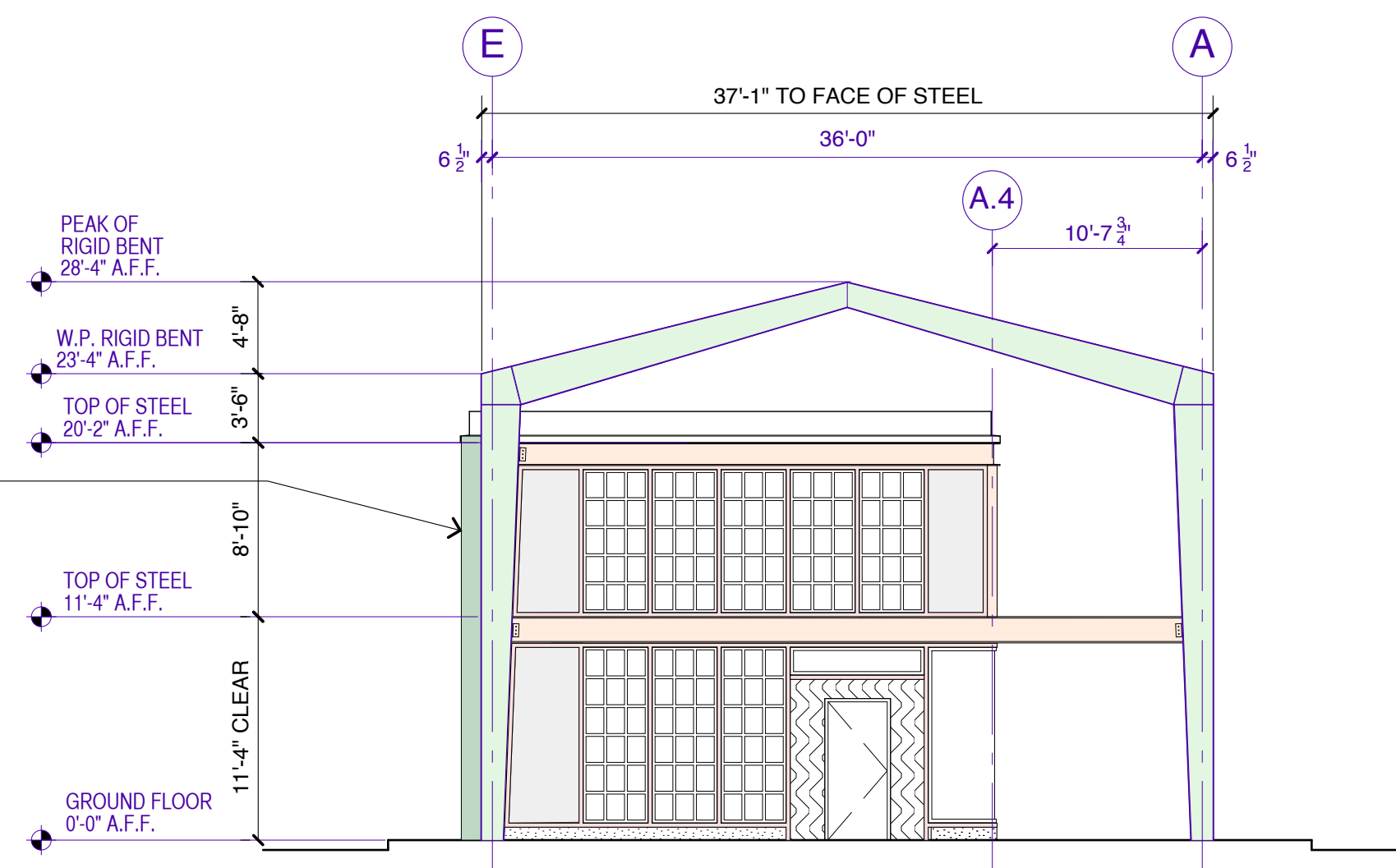
1 EAST ELEVATION
SEE ENLARGED ELEVATION 1, ON SHEET BA3.2



2 WEST ELEVATION
SEE ENLARGED ELEVATION 2, ON SHEET BA3.2



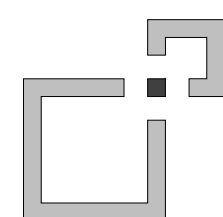
3 NORTH ELEVATION
SEE ENLARGED ELEVATION 1, ON SHEET BA3.3
(SIMILAR - OPPOSITE HAND)



4 SOUTH ELEVATION
SEE ENLARGED ELEVATION 1, ON SHEET BA3.3



Federal Realty
INVESTMENT TRUST



owner:
FEDERAL REALTY INVESTMENT TRUST
ASSEMBLY ROW
5 MIDDLESEX AVENUE, 4TH FLOOR
SOMERVILLE MA 02145
PHONE: (617) 684-1508

Project Architect:
D'AGOSTINO IZZO QUIRK ARCHITECTS, Inc.
1310 BROADWAY
SOMERVILLE, MA 02144
PHONE: (617) 623-3000

Structural Engineer:
McNAMARA SALVIA, Inc.
160 FEDERAL STREET
BOSTON MA 02110
PHONE: (617) 737-0040

Mechanical Engineer:
WSP FLACK & KURTZ
88 BLACK FALCON AVENUE,
SUITE 210
BOSTON MA 02110
PHONE: (617) 210-1600

Specifications
WIL-SPEC
15 POST OFFICE
SQUARE
LYNNFIELD MA 01940
PHONE: (781) 598-6789

STAMP

REVISIONS

DATE	ISSUED FOR
30 JUNE 2016	BID SET

LINEAR PARK BUILDINGS: BUILDING B

DRAWING TITLE

EXTERIOR ELEVATIONS

SCALE
1/8" = 1'-0"

DRAWN BY
CMD

DATE
30 JUNE 2016

JOB NUMBER
15008

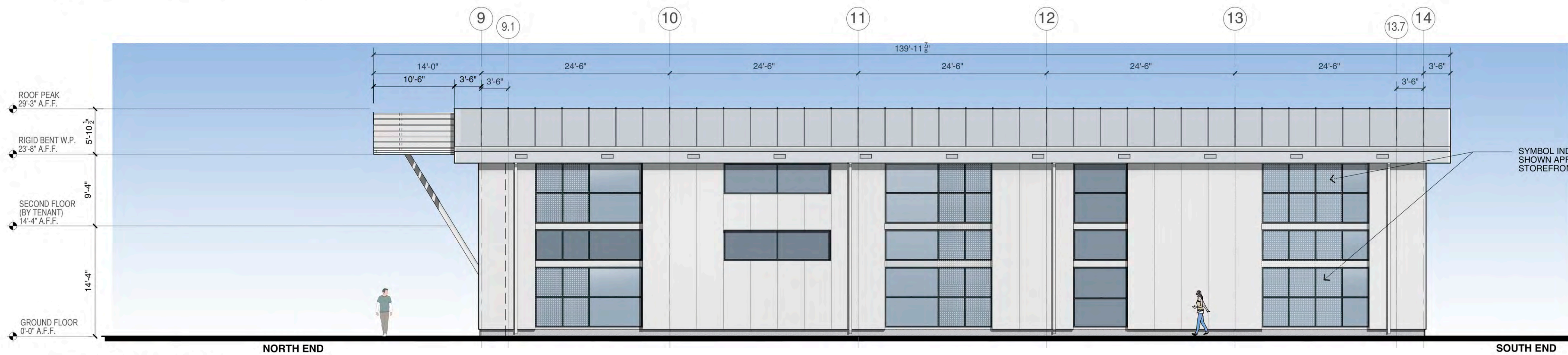
DRAWING NUMBER

BA3.1

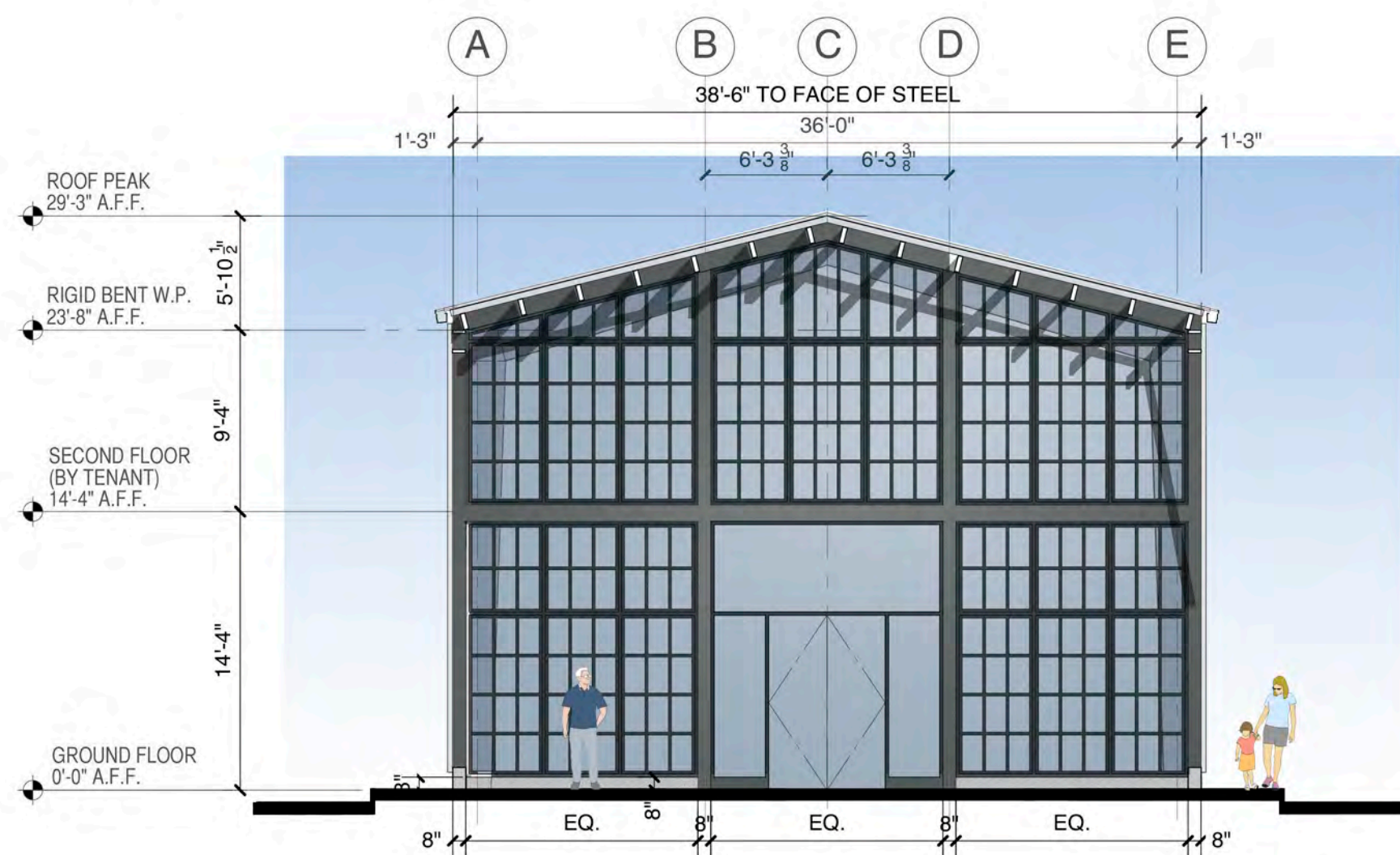
15008 BA3.1 A0.4 Elevs.PC9



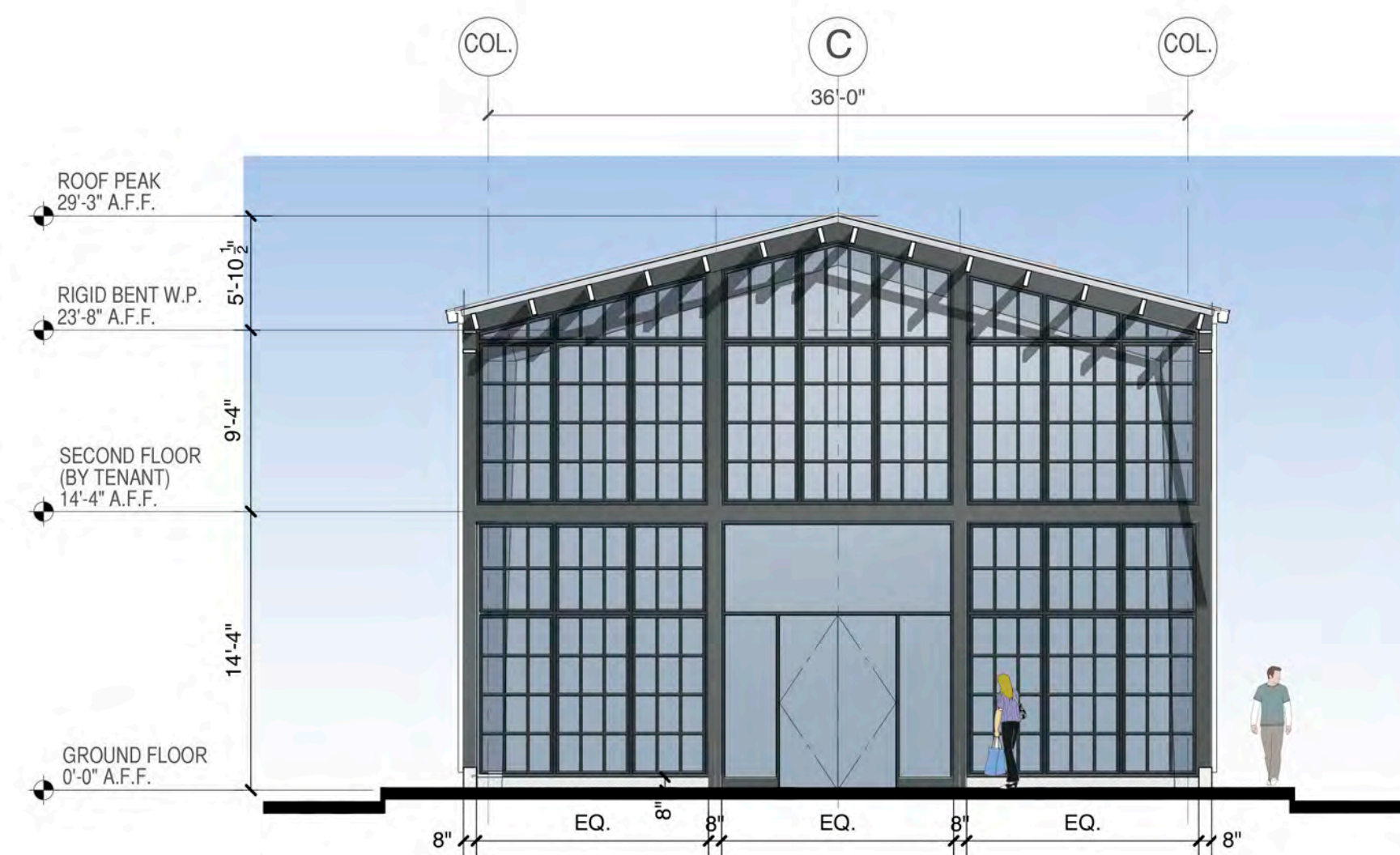
1 EAST ELEVATION



2 WEST ELEVATION



3 NORTH ELEVATION
SEE ENLARGED ELEVATION ON SHEET AA3.2

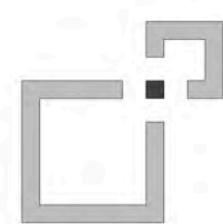


4 SOUTH ELEVATION
SEE ENLARGED ELEVATION ON SHEET AA3.1 (SIMILAR)

SYMBOL INDICATES METAL SCREEN (TYPICAL AT BUILDING A):
SHOWN APPLIED OVER THE ALUMINUM AND GLASS
STOREFRONTS.



Federal Realty
INVESTMENT TRUST



owner:
FEDERAL REALTY INVESTMENT TRUST
ASSEMBLY ROW
5 MIDDLESEX AVENUE, 4TH FLOOR
SOMERVILLE MA 02145
PHONE: (617) 684-1508

Project Architect:
D'AGOSTINO IZZO QUIRK ARCHITECTS, Inc.
1310 BROADWAY
SOMERVILLE, MA 02144
PHONE: (617) 623-3000

Structural Engineer:
McNAMARA SALVIA, Inc.
160 FEDERAL STREET
BOSTON MA 02110
PHONE: (617) 737-0040

Mechanical Engineer:
WSP FLACK & KURTZ
88 BLACK FALCON AVENUE,
SUITE 210
BOSTON MA 02110
PHONE: (617) 210-1600

Specifications
WIL-SPEC
15 POST OFFICE
SQUARE
LYNNFIELD MA 01940
PHONE: (781) 598-6789

STAMP

REVISIONS

DATE	ISSUED FOR
30 JUNE 2016	BID SET
DD MON 2016	REVISION 1

LINEAR PARK BUILDINGS: BUILDING A

DRAWING TITLE

**BUILDING A:
COLOR ELEVATIONS**

SCALE
1/8" = 1'-0"

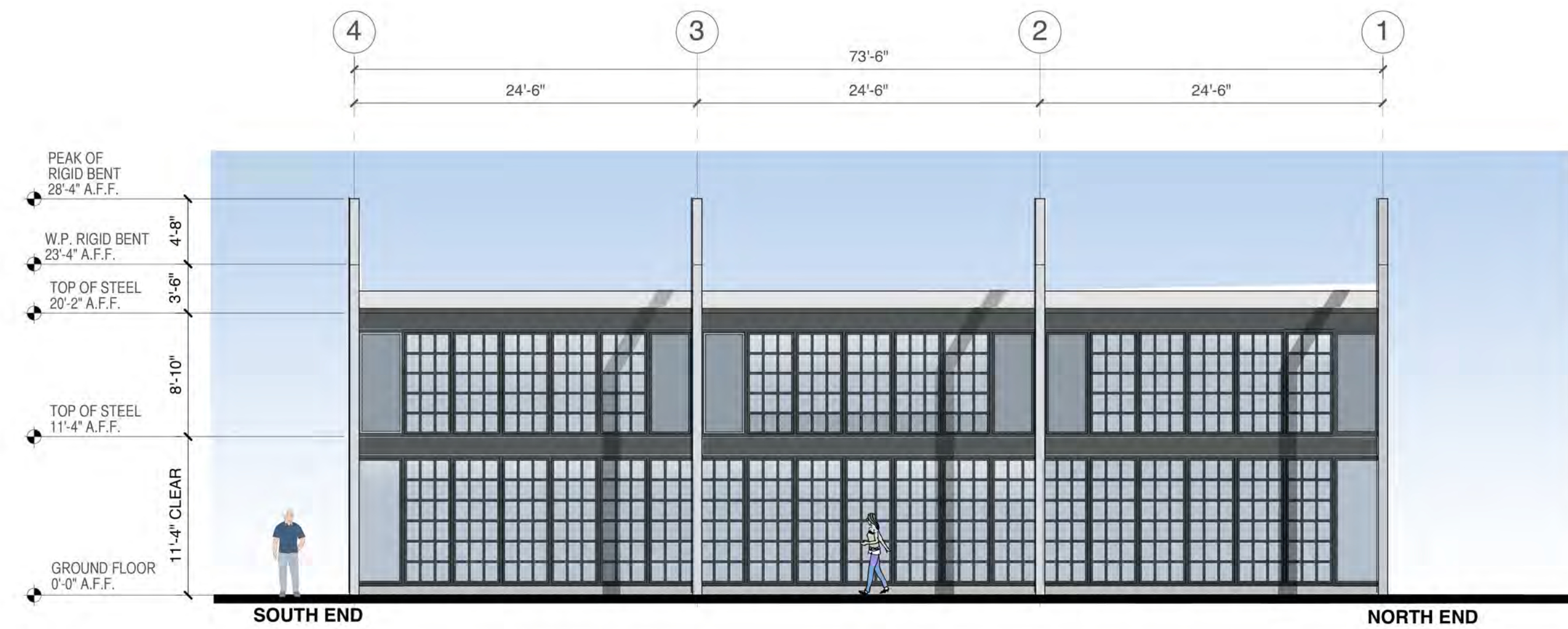
DRAWN BY
CMD

DATE
30 JUNE 2016

JOB NUMBER
15008

DRAWING NUMBER

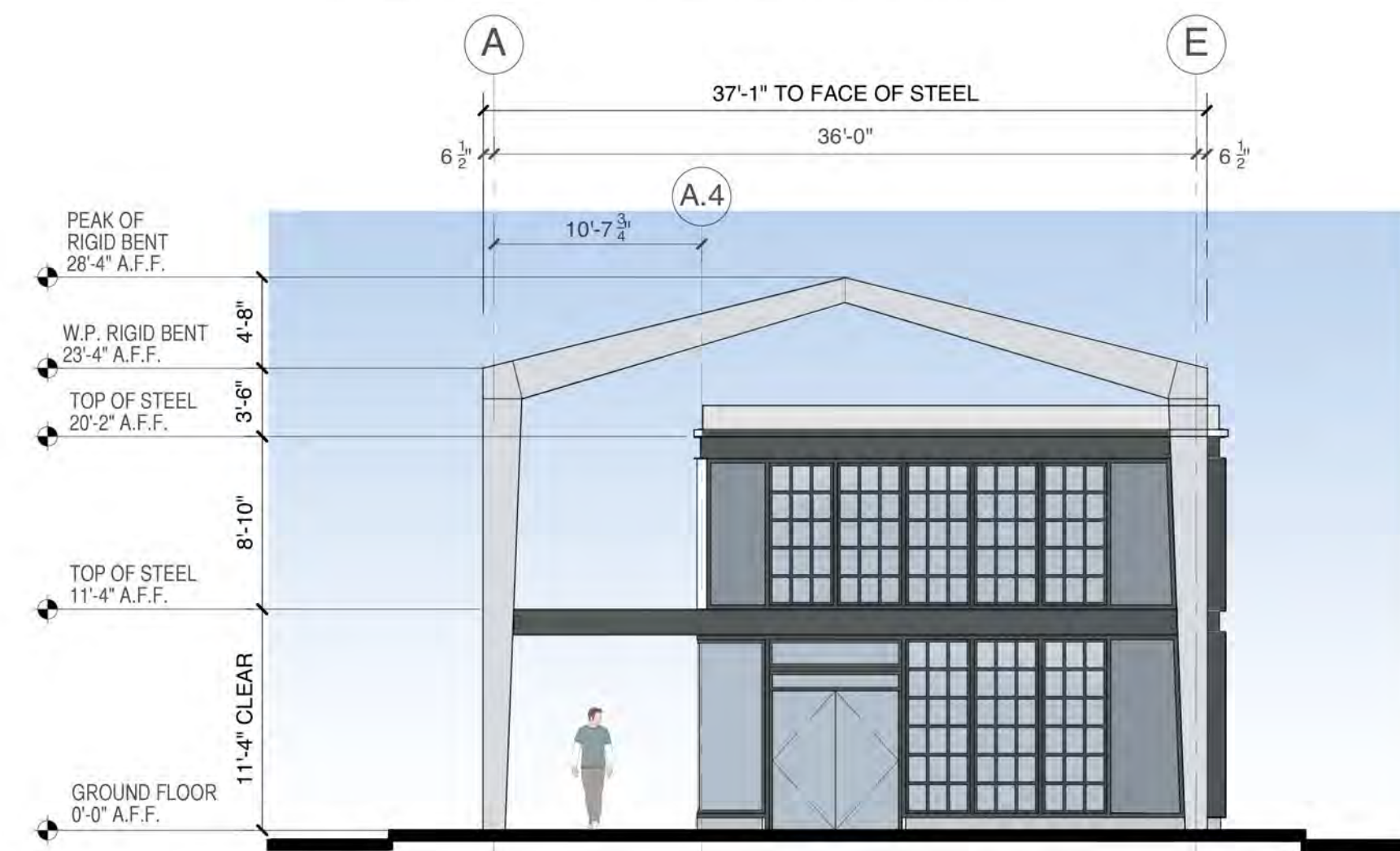
A



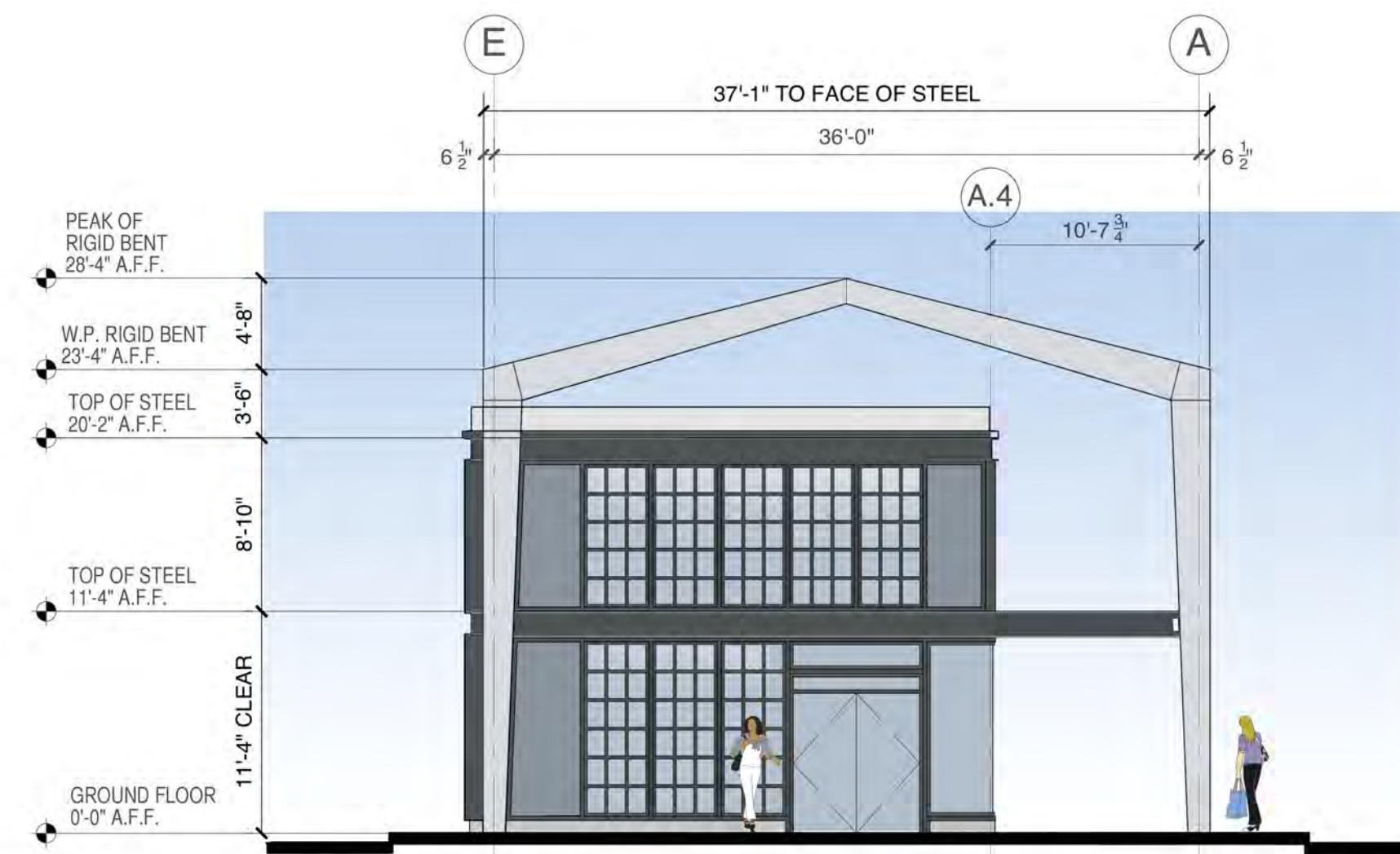
1 EAST ELEVATION
SEE ENLARGED ELEVATION 1, ON SHEET BA3.2



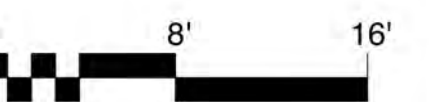
2 WEST ELEVATION
SEE ENLARGED ELEVATION 2, ON SHEET BA3.2



3 NORTH ELEVATION
SEE ENLARGED ELEVATION 1, ON SHEET BA3.3
(SIMILAR - OPPOSITE HAND)



4 SOUTH ELEVATION
SEE ENLARGED ELEVATION 1, ON SHEET BA3.3



owner:
FEDERAL REALTY INVESTMENT TRUST
ASSEMBLY ROW
5 MIDDLESEX AVENUE, 4TH FLOOR
SOMERVILLE MA 02145
PHONE: (617) 684-1508

Project Architect:
D'AGOSTINO IZZO QUIRK ARCHITECTS, Inc.
1310 BROADWAY
SOMERVILLE, MA 02144
PHONE: (617) 623-3000

Structural Engineer:
McNAMARA SALVIA, Inc.
160 FEDERAL STREET
BOSTON MA 02110
PHONE: (617) 737-0040

Mechanical Engineer:
WSP FLACK & KURTZ
88 BLACK FALCON AVENUE,
SUITE 210
BOSTON MA 02110
PHONE: (617) 210-1600

Specifications
WIL-SPEC
15 POST OFFICE
SQUARE
LYNNFIELD MA 01940
PHONE: (781) 598-6789

STAMP

REVISIONS	
DATE	ISSUED FOR
30 JUNE 2016	BID SET

LINEAR PARK BUILDINGS: BUILDING B

DRAWING TITLE

**BUILDING B:
COLOR ELEVATIONS**

SCALE
1/8" = 1'-0"

DRAWN BY
CMD

DATE
30 JUNE 2016

JOB NUMBER
15008

DRAWING NUMBER

B

160813 BldgB Color Elev PC3