
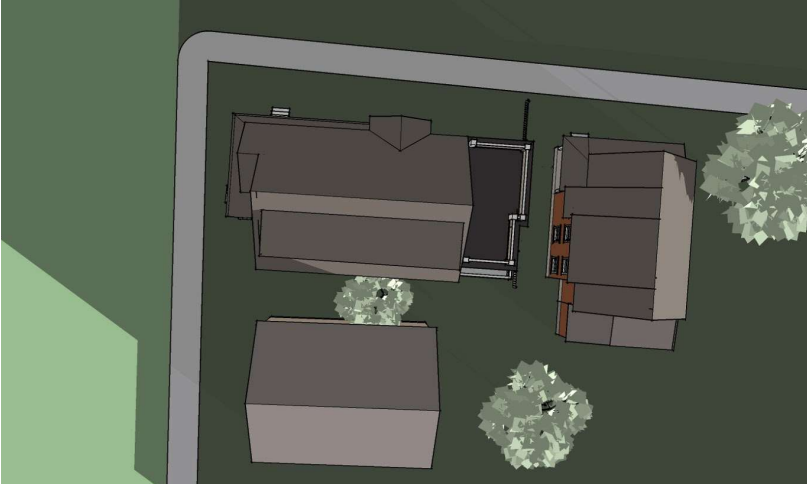

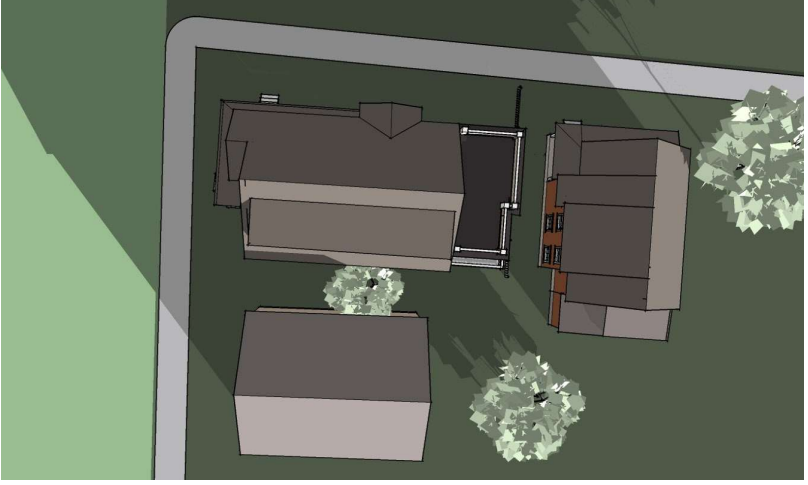

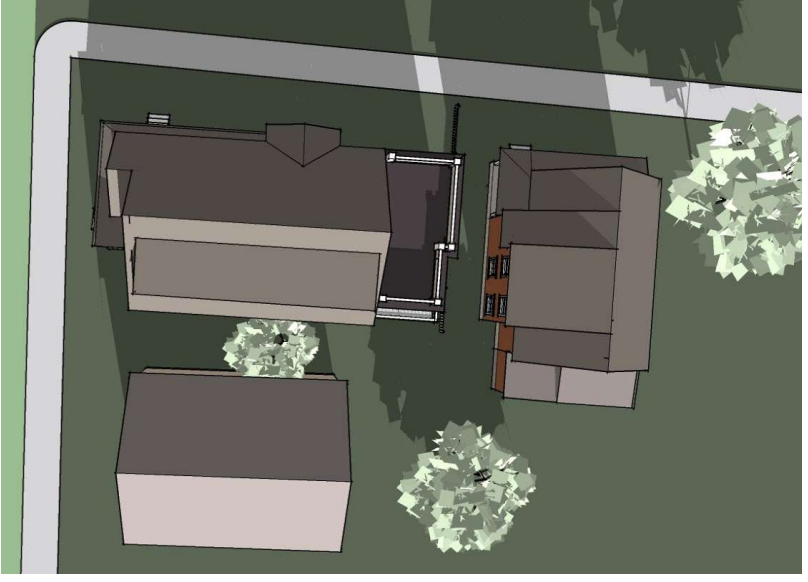


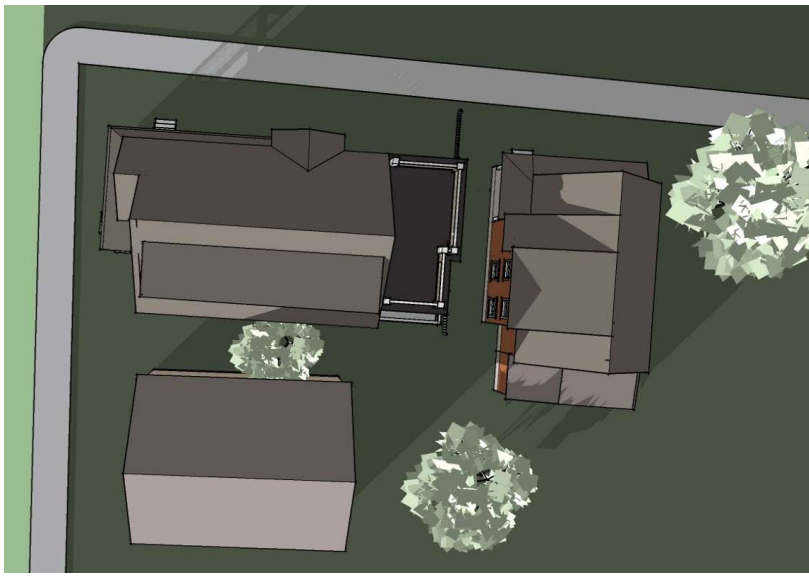
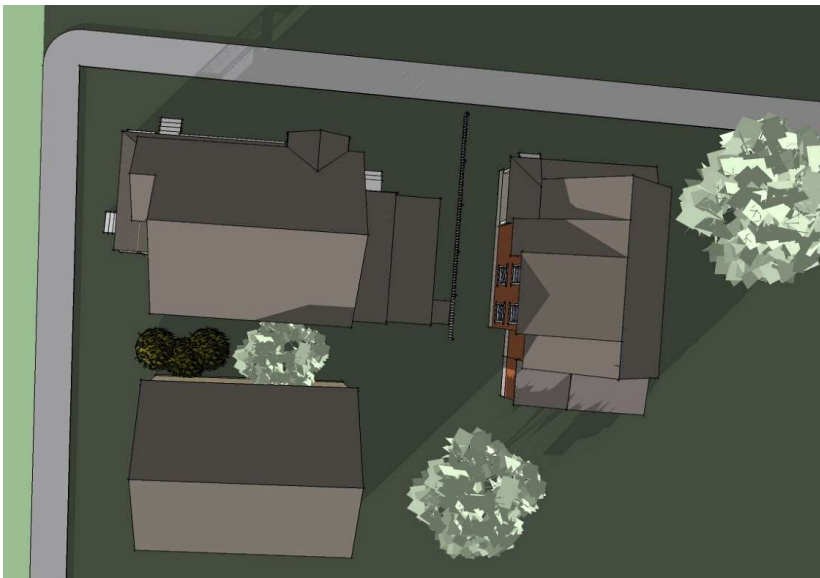
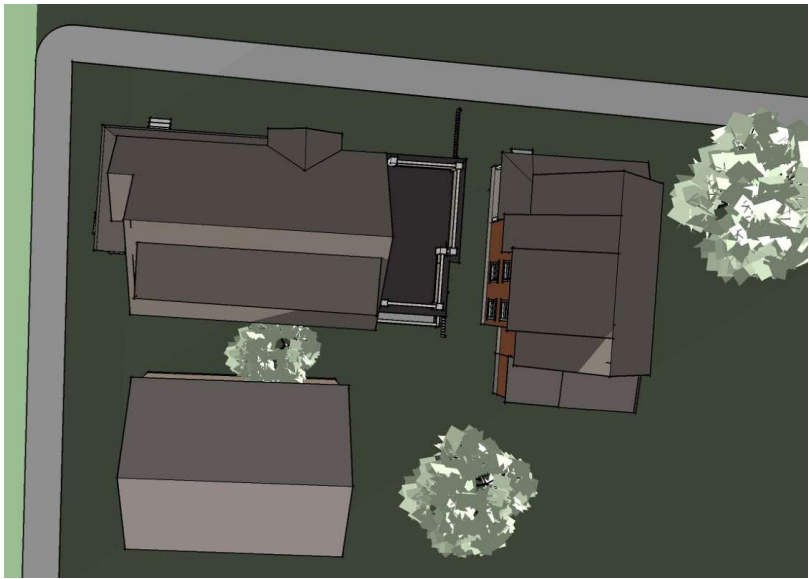
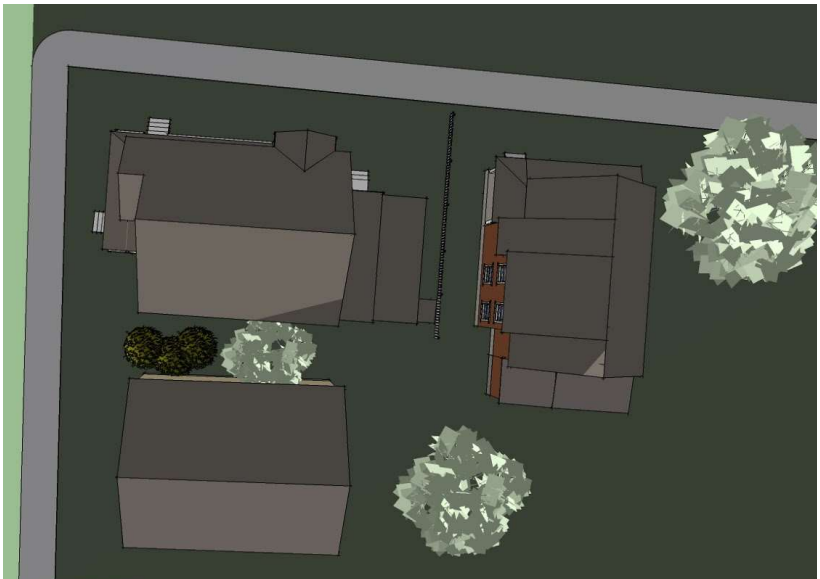


12/22 Time:	Existing Model	Proposed Model
8:30 AM	 An aerial perspective of a residential lot with two houses and trees. The sun is low in the sky, creating long, dark shadows that stretch across the lawn and onto the adjacent street.	 An aerial perspective of the same lot with the proposed model. The shadows are long and cast in a similar direction to the existing model, indicating minimal change in shadow length at this time.
10:00 am	 An aerial perspective of the existing model at 10:00 am. The shadows are shorter than at 8:30 am and cast at a steeper angle.	 An aerial perspective of the proposed model at 10:00 am. The shadows are shorter and cast at a similar angle to the existing model.
12:00 pm	 An aerial perspective of the existing model at noon. The shadows are at their shortest and cast almost directly beneath the buildings.	 An aerial perspective of the proposed model at noon. The shadows are very short and cast directly beneath the buildings, matching the existing model.
2:00 PM	 An aerial perspective of the existing model at 2:00 PM. The shadows are longer than at noon and cast towards the northwest.	 An aerial perspective of the proposed model at 2:00 PM. The shadows are longer and cast in a similar direction to the existing model.

4:00 PM



5:00 PM



8:00 PM

After Dusk

After Dusk