

Special Permit Site Plan Review

Pursuant to Somerville Zoning By-Law, Section 5.2.

FOR

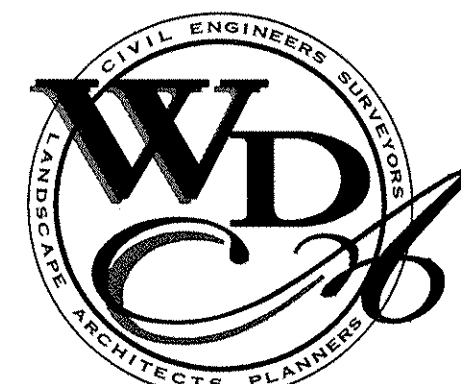
50 Inner Belt Road

IN

Somerville, Massachusetts (Middlesex County)

DATE: August 14, 2008

PREPARED BY:



WATERMAN DESIGN
ASSOCIATES, INC.

31 East Main Street
Westborough, MA 01581

508.366.6552
508.366.6506 (FAX)
WATERMANDSIGN.COM WDA@WDASSOC.COM

OWNERS:

InterNAP
Network Services
70 Inner Belt Road
Somerville, MA 02143

APPLICANT:

InterNAP
Network Services
70 Inner Belt Road
Somerville, MA 02143

SHEET LIST:

C1.01	EXISTING CONDITIONS PLAN
C2.01	SITE PREPARATION & DEMOLITION PLAN
C2.02	LAYOUT AND MATERIALS PLAN
C2.03	GRADING AND DRAINAGE PLAN
C2.04	UTILITY PLAN
C2.05	PLANTING AND LIGHTING PLAN
C3.01-C3.02	DETAILS

SEE SHEET C1.01 FOR REFERENCES.

2. LOCATIONS OF UNDERGROUND UTILITIES SHOWN HEREON WERE COMPILED FROM AVAILABLE RECORD PLANS OF UTILITY COMPANIES AND ARE APPROXIMATE AND ASSUMED. PRIOR TO COMMENCING SITE WORK, CONTRACTOR SHALL CALL "DIG SAFE" AT 1-888-344-1238 TO ACCURATELY LOCATE UNDERGROUND UTILITIES. THE CONTRACTOR SHALL NOTIFY APPROPRIATE UTILITY DEPARTMENTS / COMPANIES OF ANY UTILITIES DAMAGED DURING CONSTRUCTION. ANY COSTS RELATED TO THE REPAIR OF UTILITIES DAMAGED AS A RESULT OF CONSTRUCTION ACTIVITY SHALL BE THE CONTRACTOR'S RESPONSIBILITY. NO EXCAVATION SHALL BE PERFORMED UNTIL ALL UTILITY COMPANIES HAVE BEEN NOTIFIED.

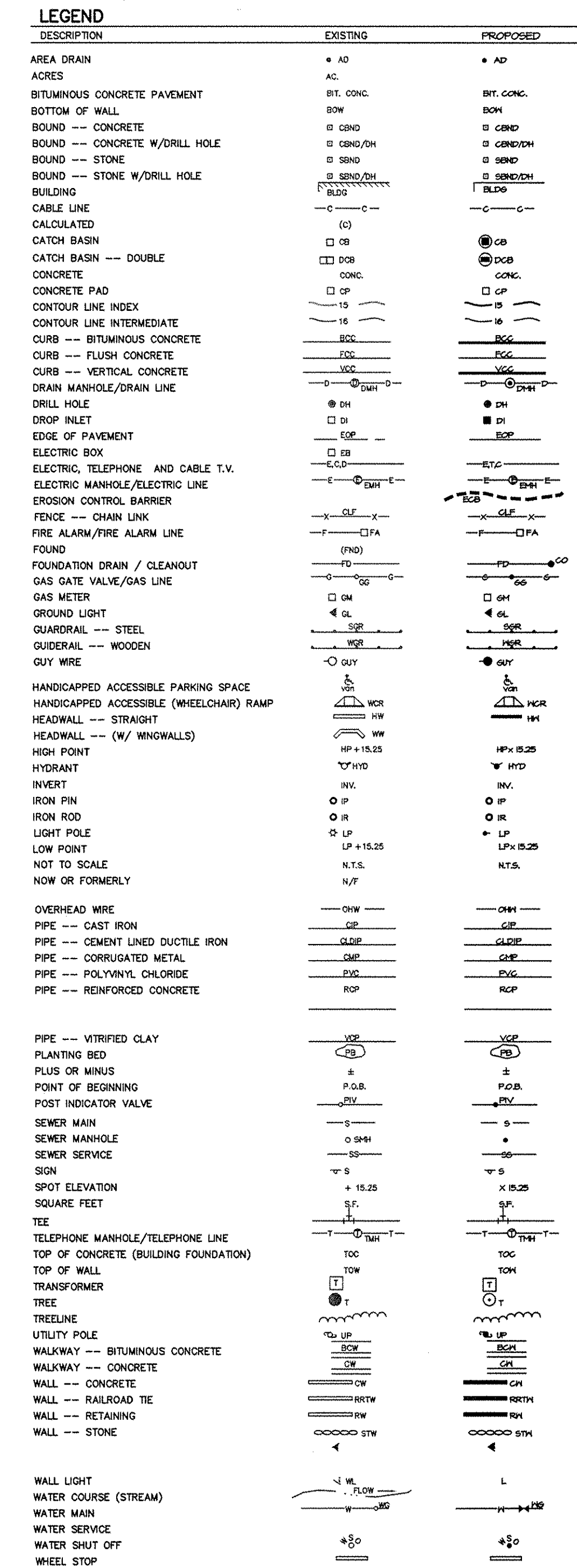
3. CONTRACTOR TO CONFIRM SIZE AND DISPOSITION OF ALL UTILITIES TO SITE AND TO PROVIDE LOCATION OF PRIVATE UTILITIES TO WITHIN SITE WITH RESPECTIVE UTILITY COMPANIES.

4. PRIOR TO CONSTRUCTION AN EROSION CONTROL BARRIER (ECB) SHALL BE PROVIDED AS SHOWN ON PLANS. THE CONTRACTOR SHALL BE RESPONSIBLE FOR MAINTAINING THE ECB THROUGHOUT ALL PHASES OF CONSTRUCTION AS WELL AS COMPLYING WITH ANY OTHER CONDITIONS ESTABLISHED IN ZBA DECISION.

5. EXISTING PAVEMENT SHALL BE SAN CUT, AND NEW PAVEMENT SHALL BE BLENDED SMOOTHLY TO MEET CUT EDGES.




6. ALL MATERIALS NOTED FOR REMOVAL OR DEMOLITION SHALL BECOME THE PROPERTY OF THE CONTRACTOR AND MUST EITHER BE RECYCLED OR DISPOSED OF OFF SITE ACCORDING TO APPLICABLE REGULATIONS. CONTRACTOR IS RESPONSIBLE FOR OBTAINING NECESSARY PERMITS FOR DEMOLITION, HAULING AND DISPOSING OF SAID MATERIALS.

7. THE PROPOSED IMPROVEMENTS SHOWN HEREON ARE SUBJECT TO THE CONDITIONS SET FORTH IN THE SITE PLAN SPECIFICALLY PERTAINING TO CONDITIONAL APPROVAL ISSUED BY THE ZONING BOARD OF APPEALS IN JULY 2008.



N/F IBIC REALTY TRUST
MAP 111-A LOT 009
BOOK 19098/PAGE 114

N/F
JUPITER PROPERTY
MANAGEMENT
MAP 110-C LOT 001
OOK 19909/PAGE 501

PAVEMENT OR CONCRETE TO BE REMOVED	
FENCE, UTILITY OR DRAIN/SEWER LINE TO BE REMOVED	-X-X-X-X-
EROSION CONTROL BARRIER	
INLET PROTECTION / SILT SACK	
MAINTAIN AND PROTECT	M&P
REMOVE AND DISCARD	R&D
REMOVE AND REPLACE	R&R

FILE NO.:	CHK'D. BY: _____
0671200	SHEET: _____

THIS DRAWING IS NOT FOR CONSTRUCTION UNTIL ISSUED FOR CONSTRUCTION BY WATERMAN DESIGN ASSOCIATES, INC.

SEE SHEET C1.01 FOR REFERENCES AND SHEET C2.01 FOR LEGEND.

ALL SETBACK LINES AND DIMENSIONS ARE PARALLEL TO OR PERPENDICULAR TO LINES FROM WHICH THEY ARE MEASURED, UNLESS OTHERWISE NOTED.

CONTRACTOR SHALL VERIFY ALL CONDITIONS IN THE FIELD AND REPORT ANY DISCREPANCIES TO ENGINEER OF RECORD PRIOR TO CONSTRUCTION.

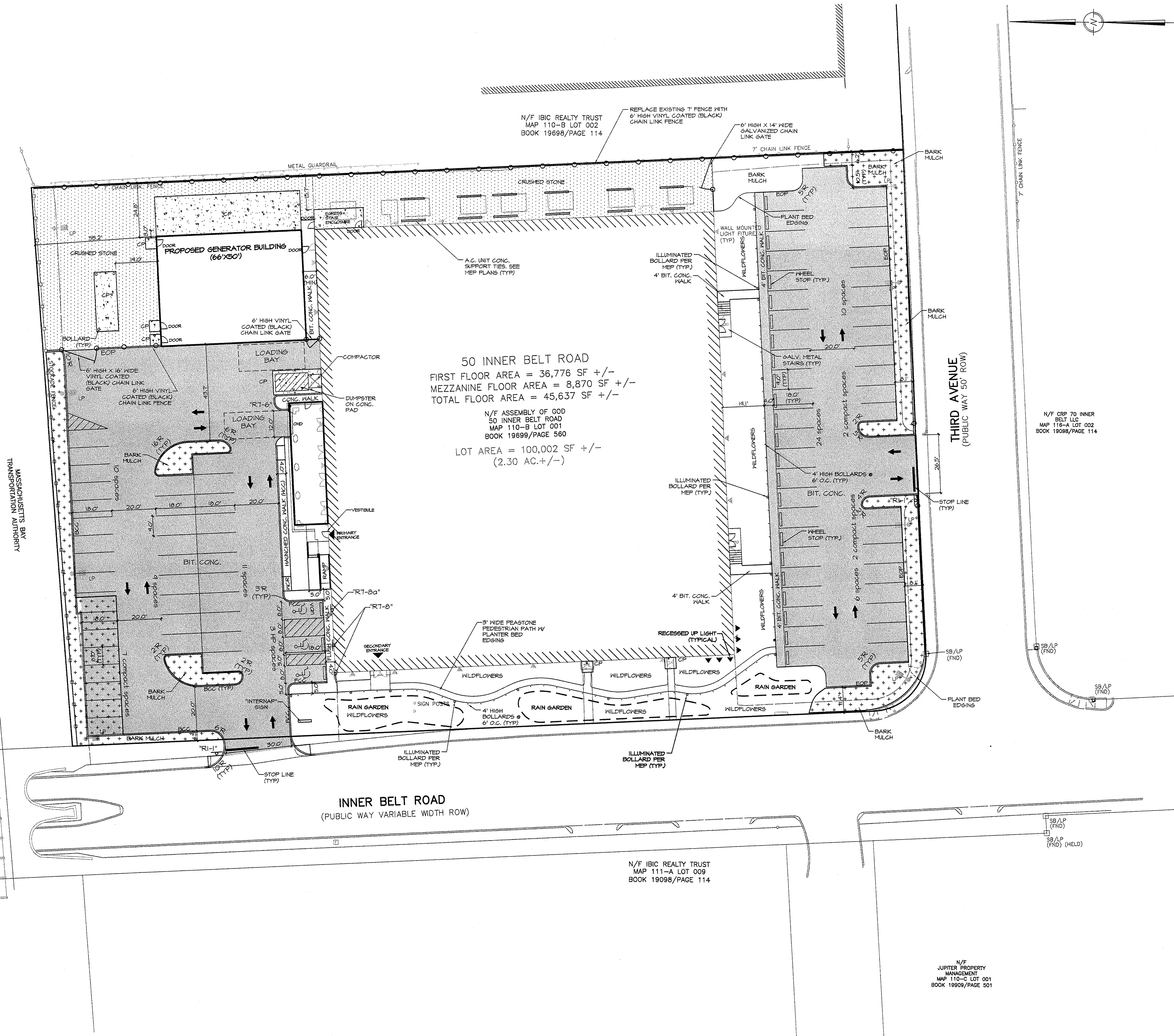
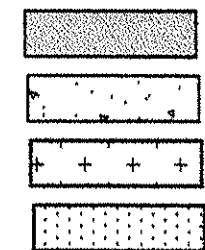
DIMENSIONS OF PARKING SPACES AND WALKWAYS ARE MEASURED FROM FACE OF CURB.

EACH HANDICAP PARKING SPACE SHALL BE IDENTIFIED BY A SIGN LOCATED AT THE BACK OF CURB. THE SIGN SHALL CONTAIN THE INTERNATIONAL SYMBOL OF ACCESSIBILITY AS DESCRIBED IN THE AMERICANS WITH DISABILITIES ACT, PUBLIC LAW 101-361, 1990 AND IN THE FHWA/USDOT MANUAL ON UNIFORM TRAFFIC CONTROL DEVICES, AS AMENDED.

ALL CURBING ALONG RADIUS AT STREET INTERSECTIONS OR SITE ENTRANCES IS TO BE GRANITE CURBING THE DISTANCE OF THE ARCS OF THE CURVES PLUS A STRAIGHT SECTION AT EACH END OF EIGHT FEET (8').

THE PROPOSED IMPROVEMENTS SHOWN HEREON ARE SUBJECT TO THE CONDITIONS SET FORTH IN THE SITE PLAN SPECIFICATIONS. PERMIT CONDITIONAL APPROVAL ISSUED BY THE ZONING BOARD OF APPEALS IN JULY 2008.

PAYEMENT
CONCRETE PAD
BARK MULCH (SNOW STORAGE)
CRUSHED STONE



ZONING SUMMARY TABLE		
DISTRICT: INDUSTRY A (IA)	REQUIRED	PROVIDED
LOT AREA (MIN.)	N/A	100,002 S.F. +/- (2.3 AC. +/-)
FRONTAGE (MIN.)	N/A	384.6 +/-
FRONT YARD	N/A	28.2 +/-
SIDE YARD	N/A	122.1 +/-
REAR YARD	N/A	246.4 +/-
BUILDING HEIGHT (MAX.)	30'	SEE ARCHITECTURAL DRAWINGS
LOT COVERAGE (MAX.)	80%	4496 +/-
LANDSCAPED AREA (MIN.)	10%	20.28 AC.
FLOOR AREA RATIO (F.A.R.)	2.0	0.5 +/-

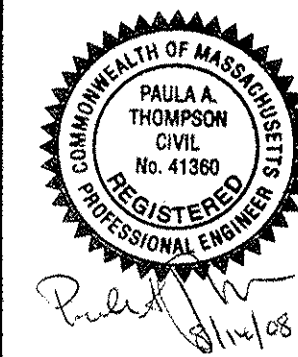
PARKING SUMMARY TABLE		
PARKING STALL DIMENSIONS: 9'x18' (CONVENTIONAL) , 8'x18' (HAND(CAP)		
	REQUIRED	PROVIDED
PARKING STALLS		
OFFICE USE (5,000 S.F. FOR 10 EMPLOYEES)	1 SP/ 500 S.F. = 10 SP.	10 SPACES
ALL OTHER COMMERCIAL/ INDUSTRIAL (40,691 S.F.)	1 SP/ 650 S.F. = 63 SP.	63 SPACES
CONVENTIONAL (9'x18) SPACES		63 SPACES
COMPACT (8'x16) PARKING SPACES	20% (MAX) OF TB = 14 SP. 11 Z SPACES	14 SPACES
	TOTAL = 78 SPACES	78 SPACES
		84

SIGN SUMMARY TABLE		
(FOR SIGNS WITH SITE PARKING AND DRIVE AREAS) ALL SIGNS SHALL CONFORM TO STANDARDS SET FORTH IN "STANDARD HIGHWAY SIGNS", 1974 (LATEST REVISION), BY THE US DOT / FHWA, UNLESS OTHERWISE NOTED.		
SIGN CODE	SIGN SIZE	LEGEND / SYMBOL
R-1	MIN.	STOP
R-1-1		DO NOT ENTER
RT-201*	MIN.	TOW-AWAY ZONE
RT-202*		NO PARKING / FIRE LANE
R-1-9		NO PARKING / LOADING ZONE
R-1-9		RESERVED PARKING (HANDICAPPED) NO ARROW
RT-100		RESERVED PARKING (VAN / ACCESSIBLE)
* MOUNT RT-201 BELOW RT-202 ON SIGN POST WITH PANELS FACING SAME DIRECTION.		

THIS DOCUMENT, AS AN INSTRUMENT OF SERVICE, IS THE SOLE PROPERTY OF WATERMAN DESIGN ASSOCIATES, INC. ITS USE BY THE OWNER FOR OTHER PROJECTS OR FOR COMPLETION OF THIS PROJECT BY OTHERS IS STRICTLY FORBIDDEN. DISTRIBUTION IN CONNECTION WITH THIS PROJECT SHALL NOT BE CONSTRUED AS PUBLICATION IN DEROGATION OF THE ENGINEERS RIGHTS.

©2008, WATERMAN DESIGN ASSOCIATES, INC.

B	08/14/08	NO CHANGES	PT
A	X	INITIAL ISSUE	
REV.	DATE	DESCRIPTION	INIT.



PREPARED BY:



WATERMAN DESIGN
ASSOCIATES, INC.

31 East Main Street
Westborough, MA 01581

508.366.6552
508.366.6506 (fax)
watermandesign.com wda@wdassoc.com

OWNER:

InterNAP
Network Services

70 Inner Belt Road
Somerville, MA 02143

APPLICANT:

InterNAP
Network Services

70 Inner Belt Road
Somerville, MA 02143

TITLE:

LAYOUT & MATERIALS PLAN

50 INNER BELT ROAD
Somerville, MA
(Middlesex County)

SPECIAL PERMIT SITE PLAN
REVIEW



DATE:	08/07/08	SCALE:	1" = 20'
-------	----------	--------	----------

DATE:	05/07/06	SHEET:	1 - 20
JOB NO.:			

DWN. BY: _____

FILE NO.:	CHK'D. BY:
-----------	------------

0671200 SHEET:

THIS DRAWING IS NOT FOR CONSTRUCTION UNTIL ISSUED FOR CONSTRUCTION BY WATERMAN DESIGN ASSOCIATES, INC.

SEE SHEET C1.01 FOR REFERENCES AND SHEET C2.01 FOR LEGEND.

LOCATIONS OF UNDERGROUND UTILITIES SHOWN HEREON WERE COMPILED FROM AVAILABLE RECORD PLANS OF UTILITY COMPANIES AND ARE APPROXIMATE AND ASSUMED. BEFORE COMMENCING SITE WORK, CONTRACTOR SHALL CALL "DIG SAFE" AT 1-888-344-1233 AND LOCAL MUNICIPAL UTILITY DEPARTMENTS TO ACCURATELY LOCATE UNDERGROUND UTILITIES. THE CONTRACTOR SHALL NOTIFY APPROPRIATE UTILITY COMPANIES / DEPARTMENTS OF ANY UTILITIES DAMAGED DURING CONSTRUCTION AND ANY COSTS RELATED TO THE REPAIR OF UTILITIES DAMAGED AS A RESULT OF CONSTRUCTION ACTIVITY SHALL BE THE CONTRACTOR'S RESPONSIBILITY. NO EXCAVATION SHALL BE PERFORMED UNTIL ALL UTILITY COMPANIES HAVE BEEN NOTIFIED.

PRIOR TO CONSTRUCTION AN EROSION CONTROL BARRIER (ECB) SHALL BE PROVIDED AS SHOWN ON THE PLANS. THE CONTRACTOR SHALL BE RESPONSIBLE FOR MAINTAINING THE ECB THROUGHOUT ALL PHASES OF CONSTRUCTION AS WELL AS COMPLYING WITH ANY OTHER CONDITIONS ESTABLISHED IN THE CONDITIONS OF THE JULY 2008 ZBA DECISION.

ALL DISTURBED AREAS SHALL BE LOAMED AND SEEDED UNLESS OTHERWISE SPECIFIED ON THE PLANS.

EXISTING PAVEMENT SHALL BE SAW CUT, AND NEW PAVEMENT SHALL BE BLENDED SMOOTHLY TO MEET CUT EDGES.

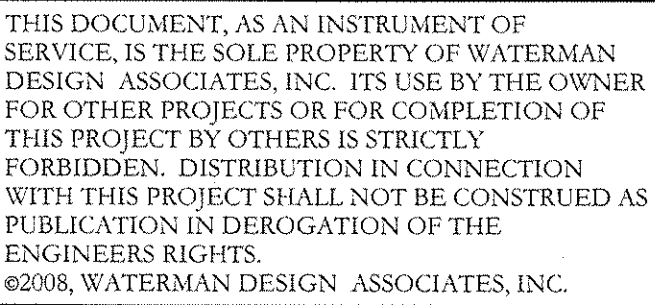
ALL UTILITY CURBS, GRATES, HATCHES, ETC., SHALL BE FLUSH WITH THE PAVEMENT FINISHED GRADE AND SHALL MEET THE SPECIFICATIONS OF THE CITY OF SOMERVILLE.

FINAL GRADES SHALL BE PITCHED EVENLY BETWEEN SPOT ELEVATIONS.

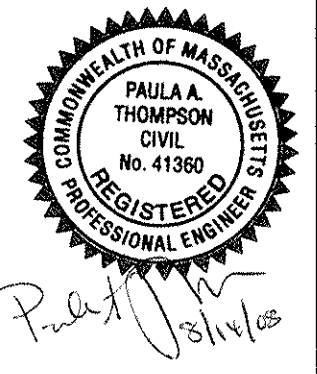
ALL GRADES IN HANDICAPPED ACCESSIBLE PARKING SPACES SHALL NOT EXCEED 2% IN ANY DIRECTION (PER 521 CMR 234.43).

ALL GRADES IN HANDICAPPED ACCESSIBLE WALKWAYS SHALL NOT EXCEED 5% (PER 521 CMR 22.3) AND SHALL NOT HAVE A CROSS PITCH OF MORE THAN 2% (PER 521 CMR 22.3.1).

3. THE PROPOSED IMPROVEMENTS SHOWN HEREON ARE SUBJECT TO THE CONDITIONS SET FORTH IN THE SITE PLAN SPECIAL PERMIT CONDITIONAL APPROVAL ISSUED BY THE ZONING BOARD OF APPEALS IN JULY 2008.



B	08/14/08		NO CHANGES	P5
A			INITIAL ISSUE	
REV.	DATE		DESCRIPTION	INIT.



PREPARED BY:



**WATERMAN DESIGN
ASSOCIATES, INC.**
31 East Main Street
Westborough, MA 01581
508.366.6552
508.366.6506 (fax)
watermandesign.com wda@wdassoc.com

OWNER

InterNAP
Network Services
70 Inner Belt Road
Somerville, MA 02143

APPLICANT:

InterNAP
Network Services
70 Inner Belt Road
Somerville, MA 02143

TITLE:
**GRADING & DRAINAGE
PLAN**
50 INNER BELT ROAD
Somerville, MA
(Middlesex County)
**SPECIAL PERMIT SITE PLAN
REVIEW**



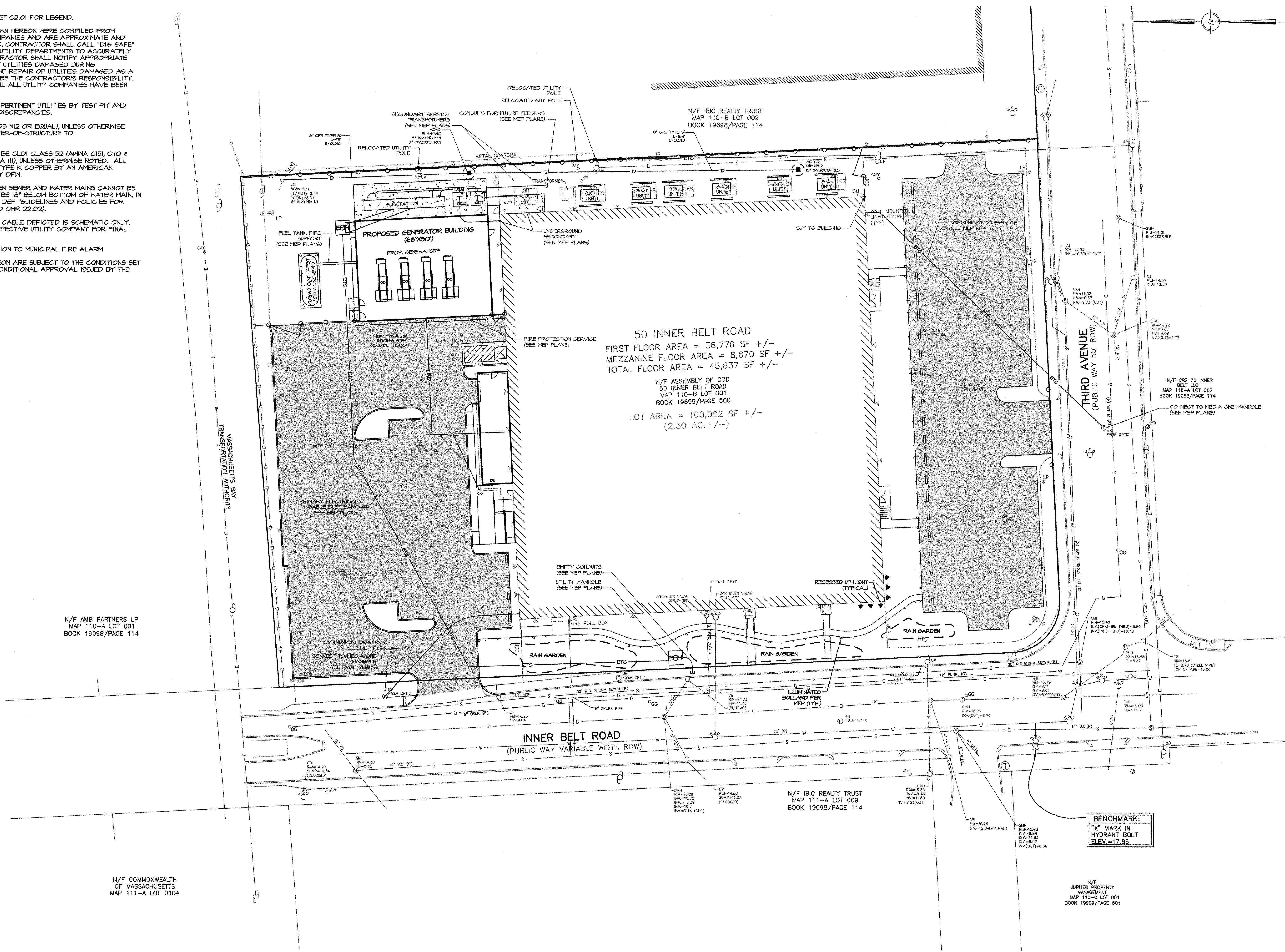
DATE:	08/07/08	SCALE:	1" = 20'
JOB NO.:	0671.01	DWN. BY:	
FILE NO.:	0671200	CHK'D. BY:	
DRAWING NO.:	0671203B	SHEET:	C2.03

THIS DRAWING IS NOT FOR CONSTRUCTION UNTIL ISSUED FOR
CONSTRUCTION BY WATERMAN DESIGN ASSOCIATES, INC.

SHEET:
C2.03

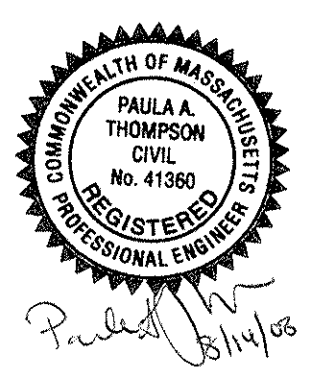
UTILITY NOTES:

1. SEE SHEET G1.01 FOR REFERENCES AND SHEET G2.01 FOR LEGEND.
2. LOCATIONS OF UNDERGROUND UTILITIES SHOWN HEREON WERE COMPILED FROM AVAILABLE RECORD PLANS OF UTILITY COMPANIES AND ARE APPROXIMATE AND ASSUMED. BEFORE COMMENCING SITE WORK, CONTRACTOR SHALL CALL "DIS SAFE" AT 1-888-344-1233 AND LOCAL MUNICIPAL UTILITY DEPARTMENTS TO ACCURATELY LOCATE UNDERGROUND UTILITIES. THE CONTRACTOR SHALL NOTIFY APPROPRIATE UTILITY COMPANIES / DEPARTMENTS OF ANY UTILITIES DAMAGED DURING CONSTRUCTION. ANY COSTS RELATED TO THE REPAIR OF UTILITIES DAMAGED AS A RESULT OF CONSTRUCTION ACTIVITY SHALL BE THE CONTRACTOR'S RESPONSIBILITY. NO EXCAVATION SHALL BE PERFORMED UNTIL ALL UTILITY COMPANIES HAVE BEEN NOTIFIED.
3. CONTRACTOR SHALL CONFIRM DEPTHS(S) OF PERTINENT UTILITIES BY TEST PIT AND NOTIFY OWNER'S REPRESENTATIVE OF ANY DISCREPANCIES.
4. ALL DRAIN PIPE SHALL BE CPE (TYPE S) (ADS N12 OR EQUAL), UNLESS OTHERWISE NOTED. PIPE LENGTHS ARE MEASURED CENTER-OF-STRUCTURE TO CENTER-OF-STRUCTURE.
5. ALL WATER MAIN PIPE AND FITTINGS SHALL BE CLDI CLASS 52 (ANNA C15), C110 & C104) WITH RUBBER GASKETED JOINTS (ANNA I11), UNLESS OTHERWISE NOTED. ALL WATER SERVICES TO BE PRESSURE RATED TYPE K COPPER BY AN AMERICAN MANUFACTURER AS REQUIRED/APPROVED BY DPM.
6. WHERE 10' HORIZONTAL SEPARATION BETWEEN SEWER AND WATER MAINS CANNOT BE MAINTAINED, CROWN OF SEWER MAIN SHALL BE 18" BELOW BOTTOM OF WATER MAIN, IN ACCORDANCE WITH SECTION 4.7.2 OF MASS. DEP "GUIDELINES AND POLICIES FOR PUBLIC WATER SYSTEMS" (AS DEFINED IN 310 CMR 22.02).
7. PROPOSED GAS, ELECTRIC, TELEPHONE AND CABLE DEPICTED IS SCHEMATIC ONLY. CONTRACTOR SHALL COORDINATE WITH RESPECTIVE UTILITY COMPANY FOR FINAL PLANS AND SPECIFICATIONS.
8. CONTRACTOR SHALL COORDINATE CONNECTION TO MUNICIPAL FIRE ALARM.
9. THE PROPOSED IMPROVEMENTS SHOWN HEREON ARE SUBJECT TO THE CONDITIONS SET FORTH IN THE SITE PLAN SPECIAL PERMIT CONDITIONAL APPROVAL ISSUED BY THE ZONING BOARD OF APPEALS IN JULY 2008.

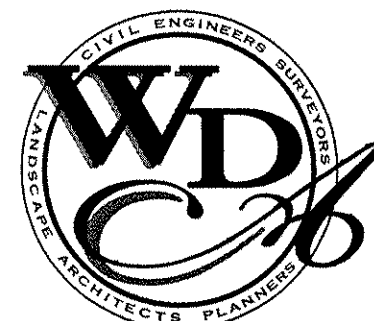


THIS DOCUMENT, AS AN INSTRUMENT OF SERVICE, IS THE SOLE PROPERTY OF WATERMAN DESIGN ASSOCIATES, INC. ITS USE BY THE OWNER FOR OTHER PROJECTS OR FOR COMPLETION OF THIS PROJECT BY OTHERS IS STRICTLY FORBIDDEN. DISTRIBUTION IN CONNECTION WITH THIS PROJECT SHALL NOT BE CONSTRUED AS PUBLICATION IN DEROGATION OF THE ENGINEER'S RIGHTS. #2008, WATERMAN DESIGN ASSOCIATES, INC.

REV	DATE	DESCRIPTION	INIT
B	08/14/08	SOMERVILLE SPECIFICATIONS	PS
A		INITIAL ISSUE	



PREPARED BY:



WATERMAN DESIGN ASSOCIATES, INC.
31 East Main Street
Westborough, MA 01581
508.366.6552
508.366.6504 (fax)
watermandesign.com wda@wdassoc.com

OWNER:

InterNAP Network Services
70 Inner Belt Road
Somerville, MA 02143

APPLICANT:

InterNAP Network Services
70 Inner Belt Road
Somerville, MA 02143

TITLE:

UTILITY PLAN

50 INNER BELT ROAD

Somerville, MA
(Middlesex County)

SPECIAL PERMIT SITE PLAN REVIEW

DATE:	08/07/08	SCALE:	1" = 20'
JOB NO.:	0671.01	DWN. BY:	
FILE NO.:	0671200	CHK'D BY:	
DRAWING NO.:	0671204B	SHEET	C2.04

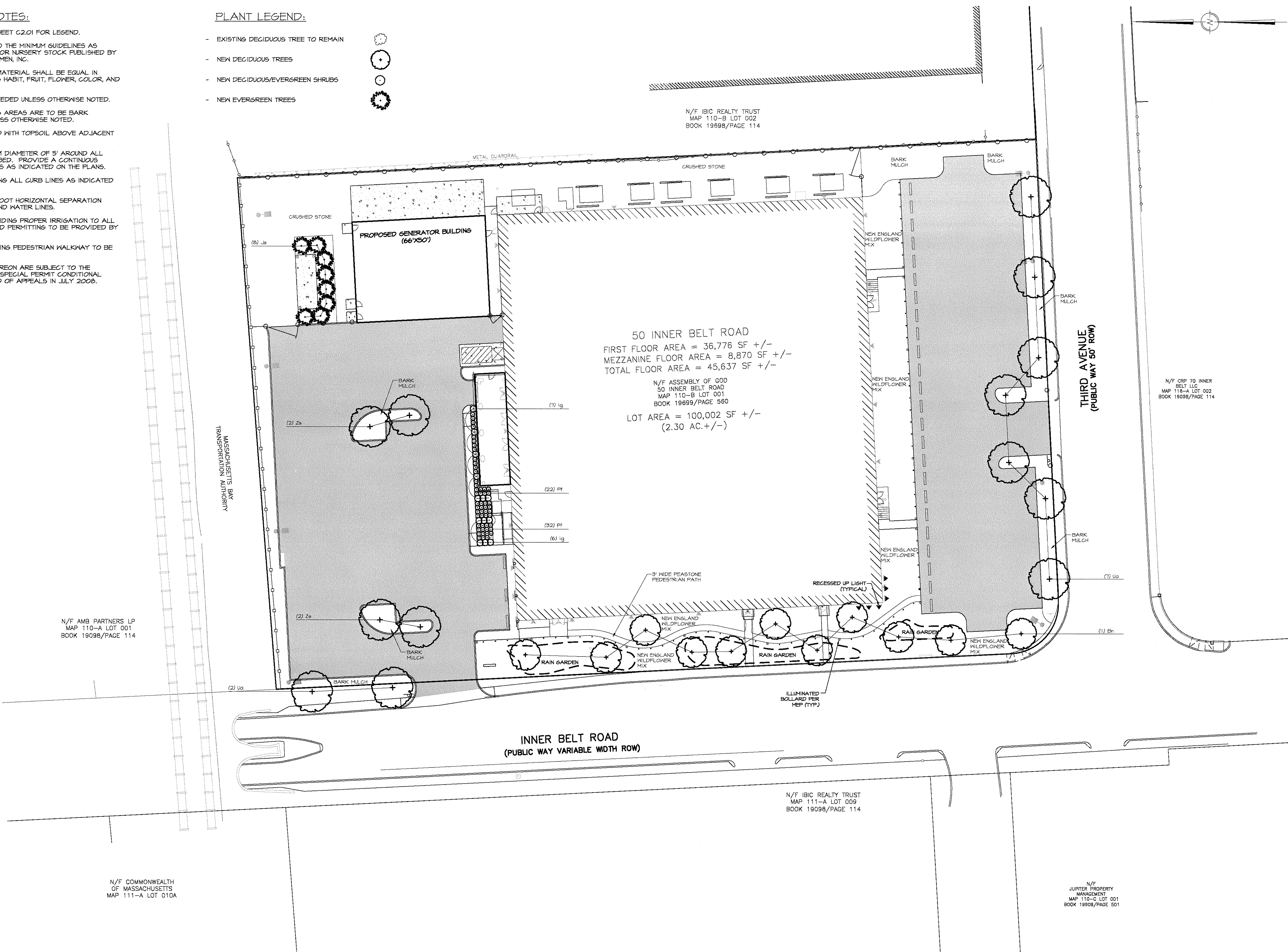
THIS DRAWING IS NOT FOR CONSTRUCTION UNTIL ISSUED FOR CONSTRUCTION BY WATERMAN DESIGN ASSOCIATES, INC.

PLANTING & LIGHTING NOTES:

- SEE SHEET G1.01 FOR REFERENCES AND SHEET G2.01 FOR LEGEND.
- ALL PLANT MATERIAL SHALL CONFORM TO THE MINIMUM GUIDELINES AS OUTLINED BY THE AMERICAN STANDARD FOR NURSERY STOCK PUBLISHED BY THE AMERICAN ASSOCIATION OF NURSEYMEN, INC.
- ANY PROPOSED SUBSTITUTION OF PLANT MATERIAL SHALL BE EQUAL IN OVERALL HEIGHT, LEAF, FORM, BRANCHING HABIT, FRUIT, FLOWER, COLOR, AND CULTURE.
- LAWN AREAS ARE TO BE LOAMED AND SEEDED UNLESS OTHERWISE NOTED.
- ALL LANDSCAPE ISLANDS WITHIN PARKING AREAS ARE TO BE BARK MULCHED TO A MINIMUM DEPTH OF 3" UNLESS OTHERWISE NOTED.
- ALL PLANTING BEDS ARE TO BE CROWNED WITH TOPSOIL ABOVE ADJACENT AREAS.
- PROVIDE A PLANTING BED WITH A MINIMUM DIAMETER OF 5' AROUND ALL TREES NOT LOCATED WITHIN A PLANTING BED. PROVIDE A CONTINUOUS MULCH BED AROUND ALL SHRUB PLANTINGS AS INDICATED ON THE PLANS.
- PROVIDE A MINIMUM 3' GRASS STRIP ALONG ALL CURB LINES AS INDICATED ON THE PLANS.
- ALL TREE PLANTINGS TO MAINTAIN A 10 FOOT HORIZONTAL SEPARATION FROM PROPOSED AND EXISTING SEWER AND WATER LINES.
- CONTRACTOR IS RESPONSIBLE FOR PROVIDING PROPER IRRIGATION TO ALL PLANT MATERIAL. IRRIGATION DESIGN AND PERMITTING TO BE PROVIDED BY OTHERS.
- PLANTING BEDS AND PEASTONE MEANDERING PEDESTRIAN WALKWAY TO BE INSTALLED WITH A METAL EDGING.
- THE PROPOSED IMPROVEMENTS SHOWN HEREON ARE SUBJECT TO THE CONDITIONS SET FORTH IN THE SITE PLAN SPECIAL PERMIT CONDITIONAL APPROVAL ISSUED BY THE ZONING BOARD OF APPEALS IN JULY 2008.

PLANT LEGEND:

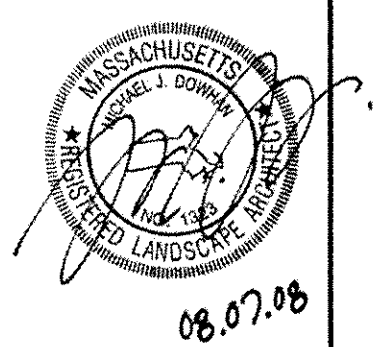
- EXISTING DECIDUOUS TREE TO REMAIN
- NEW DECIDUOUS TREES
- NEW DECIDUOUS/EVERGREEN SHRUBS
- NEW EVERGREEN TREES



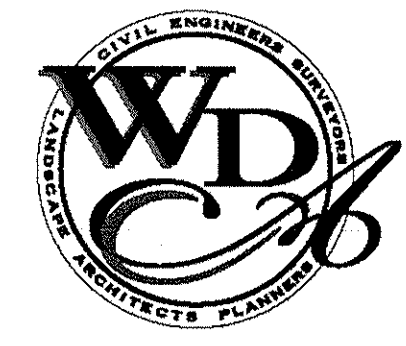
PLANT SCHEDULE				
QTY	KEY	BOTANICAL	COMMON	SIZE
TREES				
11	Bn	Betula nigra 'Cully'	Heritage River Birch - Clump	10' - 12' Clump
8	Jb	Juniperus scopulorum 'Skyrocket'	Skyrocket Juniper	8' - 10' Ht.
9	Ua	Ulmus 'Accolade'	Accolade Elm	3" - 3 1/2" Cal.
4	Zs	Zeakova serrata 'Green Vase'	Green Vase Japanese Zelkova	3" - 3 1/2" Cal.
SHRUBS				
13	Ig	Ilex glabra 'Shamrock'	Shamrock Inkberry	24" - 30" Ht.
54	PF	Potentilla fruticosa 'Longacre'	Longacre Cinquefoil	18" - 24" Ht.
GRASSES				
1,100	ls.f.	New England Wildflower Mix	Hydroseed	See Specs.

THIS DOCUMENT, AS AN INSTRUMENT OF SERVICE, IS THE SOLE PROPERTY OF WATERMAN DESIGN ASSOCIATES, INC. ITS USE BY THE OWNER FOR OTHER PROJECTS OR FOR COMPLETION OF THIS PROJECT BY OTHERS IS STRICTLY FORBIDDEN. DISTRIBUTION IN CONNECTION WITH THIS PROJECT SHALL NOT BE CONSTRUED AS PUBLICATION IN DEROGATION OF THE ENGINEER'S RIGHTS.
©2008, WATERMAN DESIGN ASSOCIATES, INC.

REV.	DATE	DESCRIPTION	INIT.
8	8/14/08	NO CHANGES	
A		INITIAL ISSUE	



PREPARED BY:



WATERMAN DESIGN ASSOCIATES, INC.
31 East Main Street
Westborough, MA 01581
508.366.6552
508.366.6506 (fax)
watermandesign.com wda@wdaassoc.com

OWNER:

InterNAP Network Services
70 Inner Belt Road
Somerville, MA 02143

APPLICANT:

InterNAP Network Services
70 Inner Belt Road
Somerville, MA 02143

TITLE:

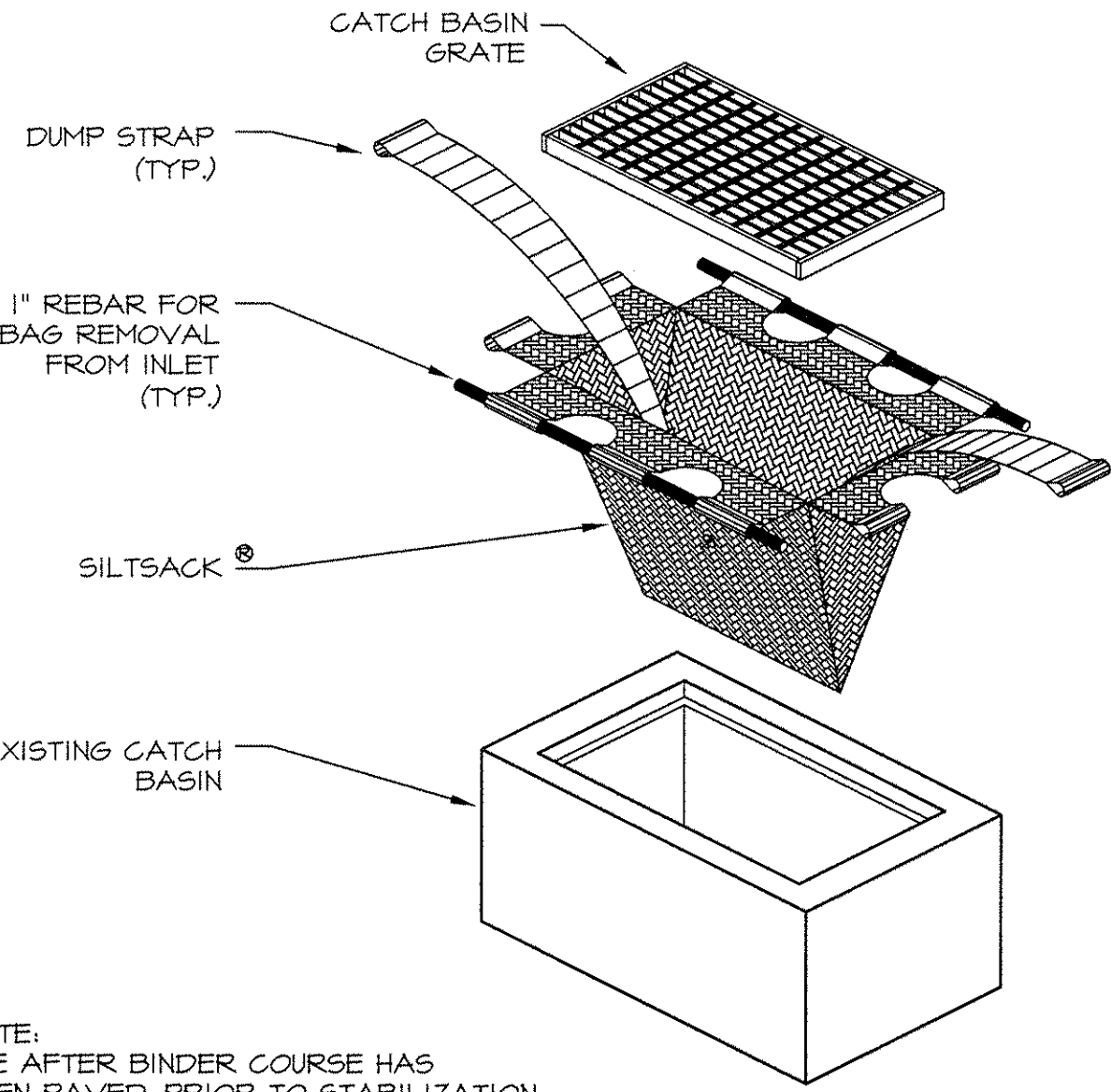
PLANTING & LIGHTING PLAN
50 INNER BELT ROAD
Somerville, MA (Middlesex County)
SPECIAL PERMIT SITE PLAN REVIEW

DATE: 08/07/08		SCALE: 1" = 20'	
JOB NO.: 0671.01	DWN. BY:	CHK'D. BY:	
FILE NO.: 0671200	SHEET:		
DRAWING NO.: 0671205A			C2.05

THIS DRAWING IS NOT FOR CONSTRUCTION UNTIL ISSUED FOR CONSTRUCTION BY WATERMAN DESIGN ASSOCIATES, INC.

EROSION AND SEDIMENTATION CONTROL NOTES:

1. EROSION CONTROL MEASURES SHALL BE INSTALLED PRIOR TO ANY CONSTRUCTION ACTIVITY AND MAINTAINED UNTIL ALL DISTURBED LAND SURFACES ARE STABILIZED.
2. A CONSTRUCTION ENTRANCE (ANTI-TRACKING PAD) SHALL BE USED TO MINIMIZE OFF-SITE MOVEMENT OF SOIL BY VEHICLES. ALL CONSTRUCTION ACCESS POINTS SHALL BE MAINTAINED TO PREVENT TRACKING OR FLOW OF SEDIMENT ONTO INNER BELT ROAD OR THIRD AVENUE.
3. UPON DISCOVERY, THE CONTRACTOR SHALL IMMEDIATELY REMOVE ANY SOIL OR DEBRIS WHICH ERODES FROM THE SITE ONTO ADJOINING PRIVATE PROPERTY, TOWN ROAD OR INTO THE EXISTING DRAINAGE SYSTEM.
4. STREET SHEEPING SHALL BE CONDUCTED BIWEEKLY (AT A MINIMUM) DURING CONSTRUCTION UNTIL SURFACES ARE STABILIZED.
5. HAYBALES BACKED BY SILTATION FENCING SHALL BE PROVIDED AS SHOWN ON THE PLANS PRIOR TO COMMENCEMENT OF CONSTRUCTION TO PREVENT SILTATION OF RESOURCE AREAS OR DOWNSTREAM PROPERTIES.
6. HAYBALE CHECK DAMS SHALL BE INSTALLED AROUND EXISTING AND NEWLY CONSTRUCTED, UNCOVERED CATCHBASINS.
7. STORMWATER FACILITIES SHALL BE CONSTRUCTED PRIOR TO EXTENSIVE DISTURBANCE OF THE SITE TO CONTROL SILTATION DURING CONSTRUCTION.
8. TEMPORARY SHALES WITH HAYBALE CHECK DAMS SHALL BE CONSTRUCTED IF NECESSARY DURING CONSTRUCTION TO DIRECT RUNOFF TO TEMPORARY SEDIMENTATION BASINS.
9. AN ADEQUATE SUPPLY OF HAYBALES, SILT FENCE AND CRUSHED STONE SHALL BE KEPT ON SITE DURING CONSTRUCTION FOR ROUTINE OR EMERGENCY REPAIRS TO EROSION/SEDIMENTATION CONTROL BARRIERS. THIS SUPPLY SHALL BE STORED IN AN AREA PROTECTED FROM THE ELEMENTS.
10. SEDIMENT SHALL BE RETAINED ON-SITE WITHIN THE LIMITS OF THE EROSION CONTROL BARRIERS AND REMOVED REGULARLY.
11. EROSION AND SEDIMENTATION CONTROL MEASURES SHALL BE MAINTAINED UNTIL FINAL STABILIZATION OF DISTURBED AREAS HAS BEEN ACCOMPLISHED.
12. EROSION CONTROLS SHALL BE INSPECTED AFTER EACH RAINFALL EVENT GREATER THAN 1/2 INCH AND ONCE PER MONTH DURING CONSTRUCTION AND CONTINUE UNTIL FINAL SITE STABILIZATION.
13. DUST SHALL BE MANAGED BY WATERING AND/OR DUST PALLIATIVE, AS APPROPRIATE.
14. DISTURBED AREAS SHALL BE MINIMIZED AND SHALL BE STABILIZED WITHIN 14 DAYS OF THE LAST DISTURBANCE UNLESS CONSTRUCTION ACTIVITIES WILL RESUME ON THAT PORTION OF THE SITE WITHIN 10 DAYS.
15. TEMPORARY STABILIZATION SHALL BE ACCOMPLISHED UTILIZING TEMPORARY SEEDING OR SPRAYED ON TACKIFIER DURING GROWING SEASON AND CHIPPED HAY AND/OR TACKIFIER DURING NON-GROWING SEASON.
16. PERMANENT STABILIZATION OF DISTURBED AREAS SHALL BE ACCOMPLISHED BY BUILDING, PAVING, SEEDING, MULCHING, AND/OR LANDSCAPING. SLOPES STEEPER THAN 3:1 SHALL BE STABILIZED BY THE USE OF EROSION CONTROL BLANKETS OVER A SURFACE PREPARED BY HYDROSEEDING.



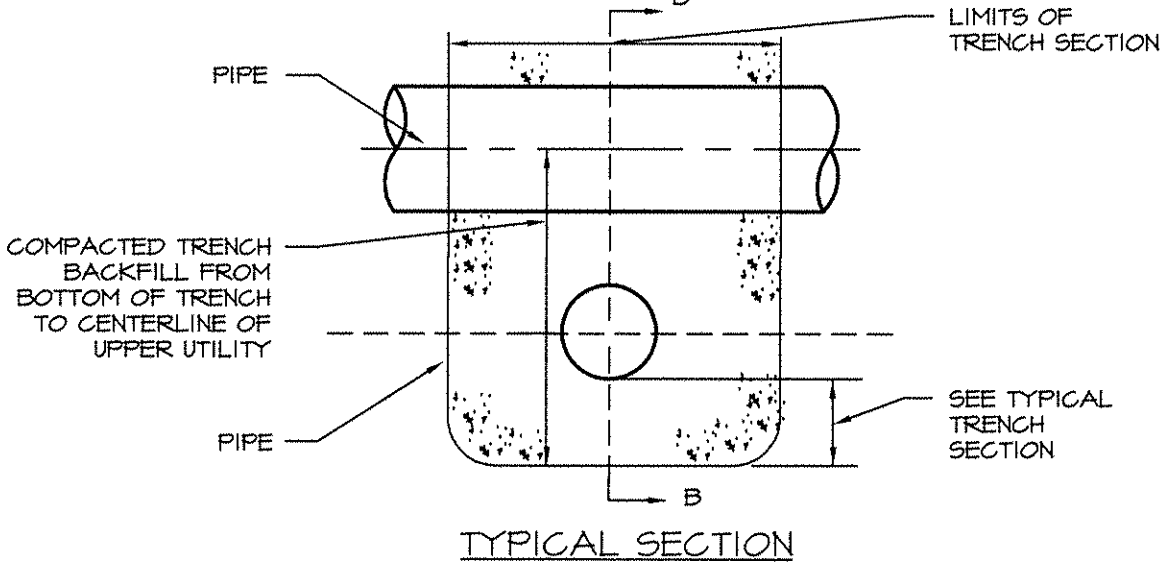
NOTE:
USE AFTER BINDER COURSE HAS BEEN PAVED, PRIOR TO STABILIZATION OF SURROUNDING UPRADIANT TERRAIN.

INLET SEDIMENT CONTROL DEVICE

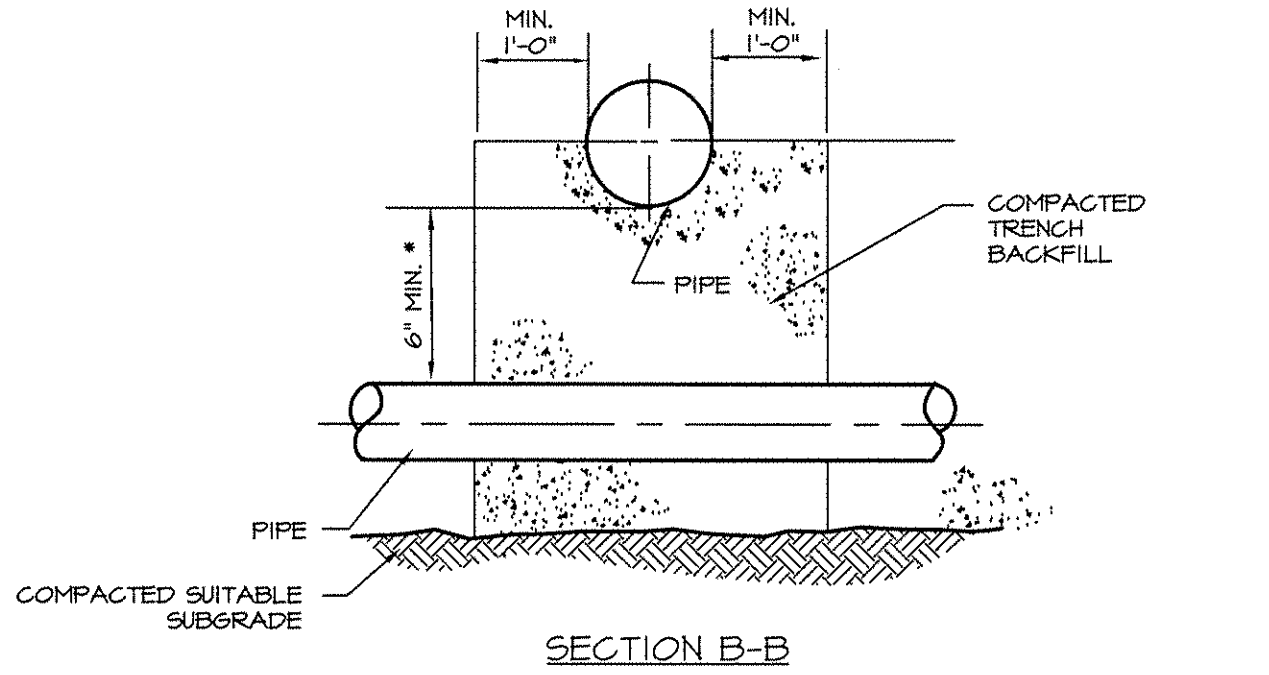
N.T.S.

02310-10

NDA, INC.



TYPICAL SECTION



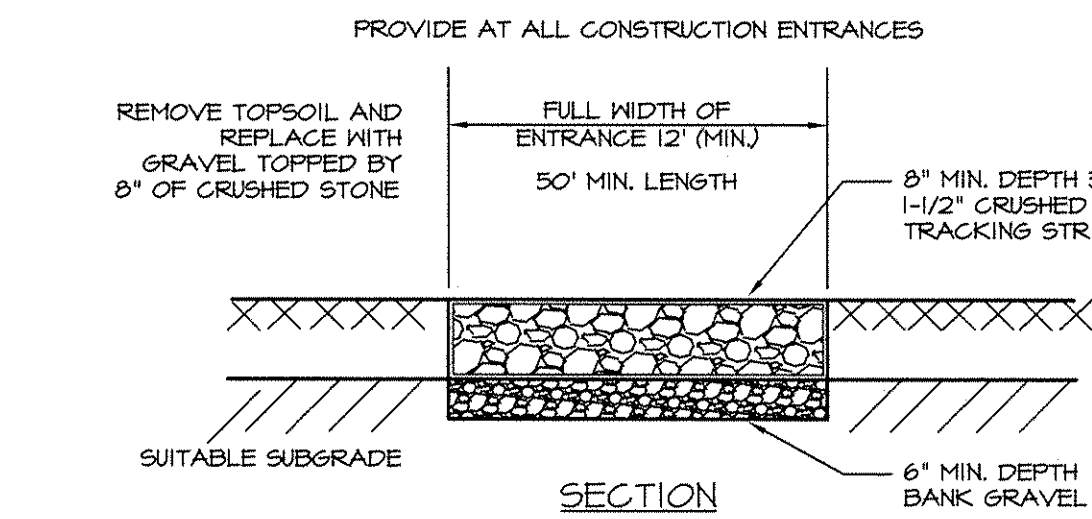
NOTE:
IF WATER MAIN AND SEWER CROSS, THEN BOTTOM OF WATER SHALL BE AT LEAST 18" ABOVE THE TOP OF SEWER OR SEWER SHALL BE CONSTRUCTED OF ANNA C-100 P.V.C. PIPE.

UTILITIES CROSSING

N.T.S.

02500-03

NDA, INC.



CONSTRUCTION ENTRANCE

N.T.S.

02100-13

NDA, INC.

NOTES:

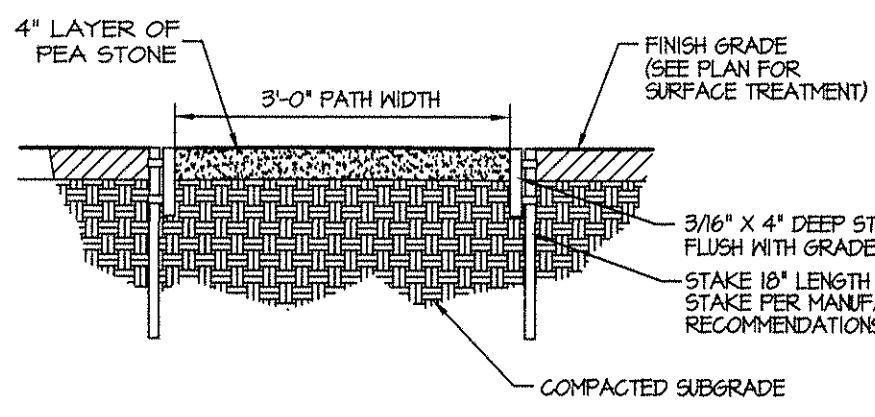
1. TREE SHALL BE SET PLUMB.
 2. STAKING ONLY UPON APPROVAL OF PROJECT LANDSCAPE ARCHITECT. STAKES ARE TO BE REMOVED NO LATER THAN ONE YEAR FROM TIME OF PLANTING.
 3. DO NOT ALLOW AIR POCKETS TO FORM WHEN BACKFILLING.
- ROOTBALL SHALL BE SET 1" ABOVE ESTABLISHED FINISHED GRADE.
- WARNINGS FLAG 18" ABOVE GRADE.
- FINISH GRADE.
- REMOVE ALL THINE ROPE, WIRE AND BURLAP FROM TOP 1/2 OF ROOT BALL. CUT WIRE BASKET AND FOLD DOWN 8" MIN. TO PLANTING HOLE.
- HOLE TO BE 3 TIMES AS WIDE AS THE ROOTBALL DIAMETER.
- INSTALL THREE GUYS PER TREE, EQUALLY SPACED AROUND BALL. ATTACH GUYS AT 2/3 HEIGHT OF TREE. USE DOUBLE STRAND GALVANIZED STEEL WIRE ENCASE WIRE AROUND TREE IN REINFORCED HOSE. SECURE WIRE ENDS WITH MALLEABLE CABLE CLAMPS.
- PROVIDE GALVANIZED TURNBUCKLES, ONE PER WIRE.
- 3" BARK MULCH IN SAUCER.
- PLANT SAUCER, 6" CONTINUOUS, NO SAUCER WHERE TREES OCCUR IN PLANTING BEDS.
- SET ANGLE OF GUYS TO ENTER GROUND AT LIMIT OF BRANCH SPREAD.
- PLANTING SOIL MIX: BACKFILL IN LOOSE LIFTS OR 6" DEPTH. SETTLE WITH THOROUGH WATER SOAKING.
- PLACE ROOT BALL ON UNEXCAVATED OR TAMPED SOIL.

EVERGREEN TREE PLANTING

N.T.S.

02400-03

NDA, INC.

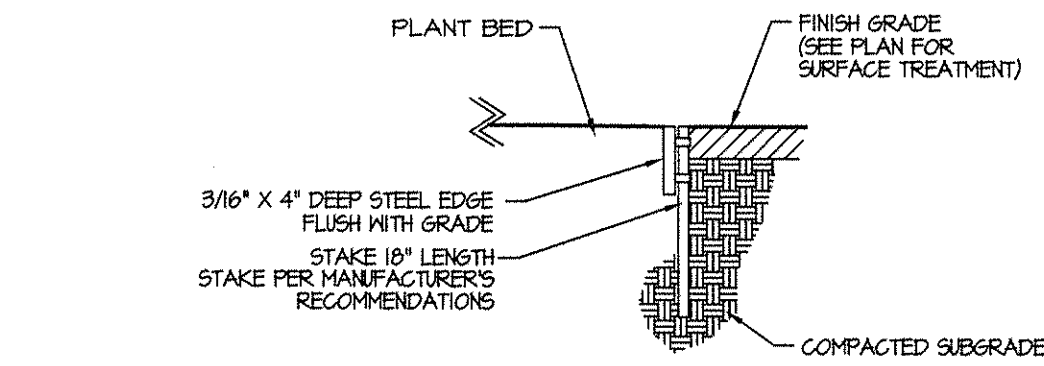


PEA STONE PATH

N.T.S.

02100-14

NDA, INC.



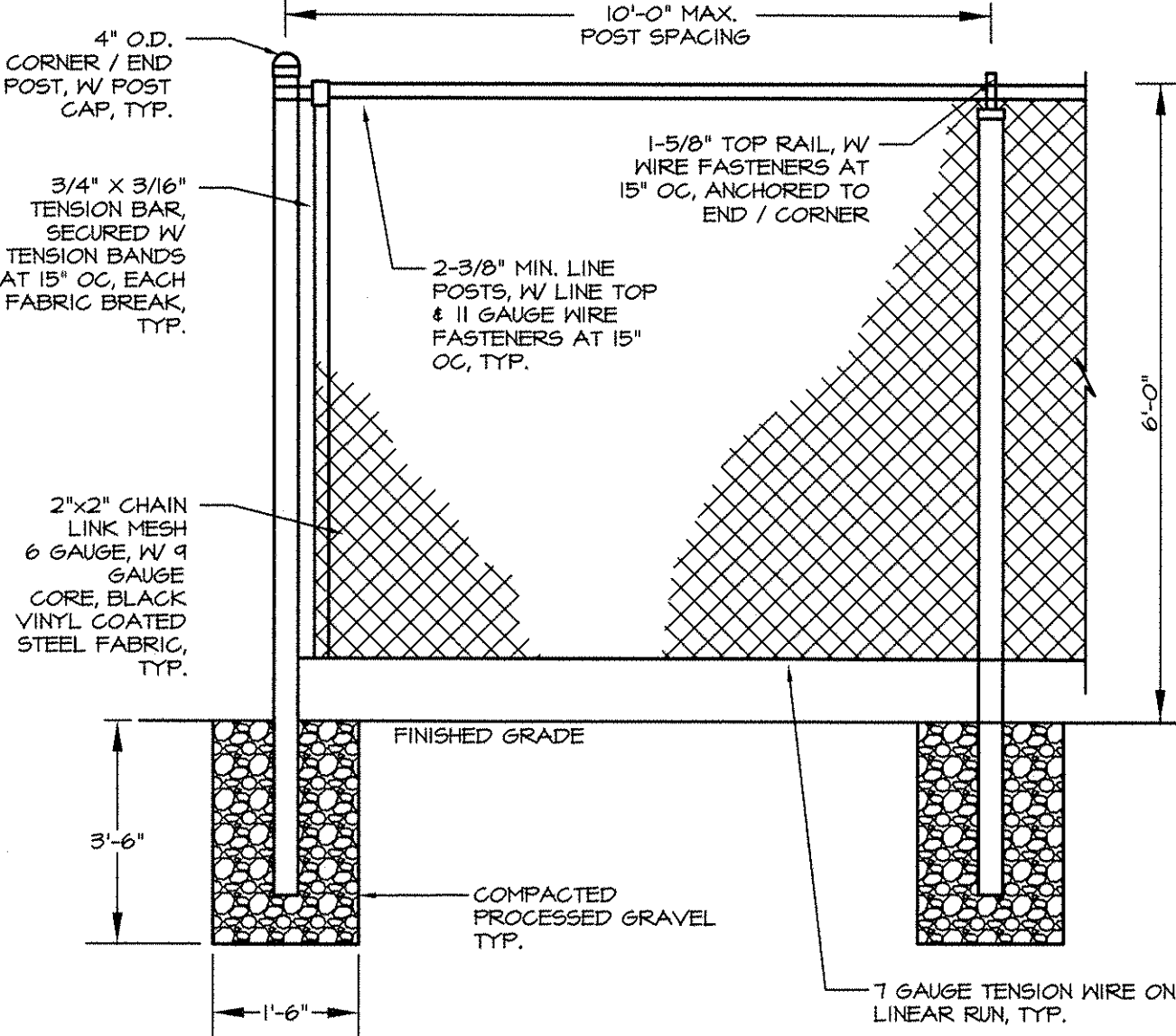
STEEL EDGING

N.T.S.

02100-14

NDA, INC.

NOTE:
MATERIALS AND INSTALLATION METHODS SHALL COMPLY WITH DIVISION II, SECTION 644 AND APPLICABLE DIVISION III SECTIONS, AS DESCRIBED IN MHDSS SECTION 644.40.

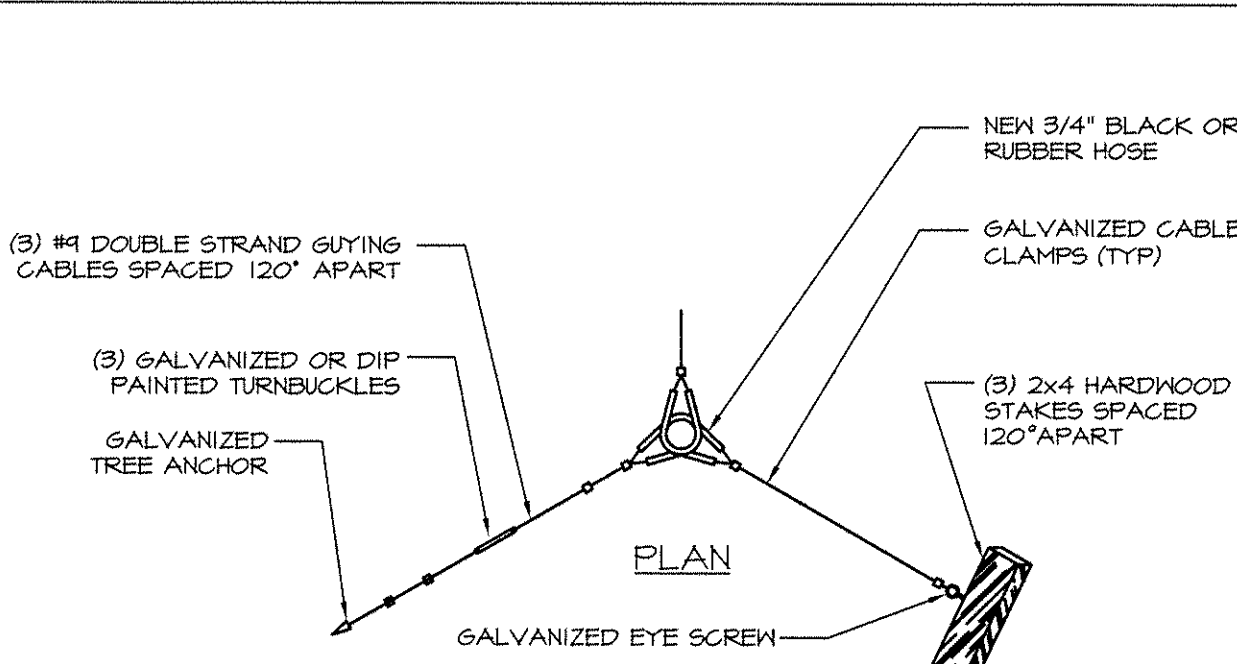


BLACK VINYL COATED CHAIN LINK FENCE

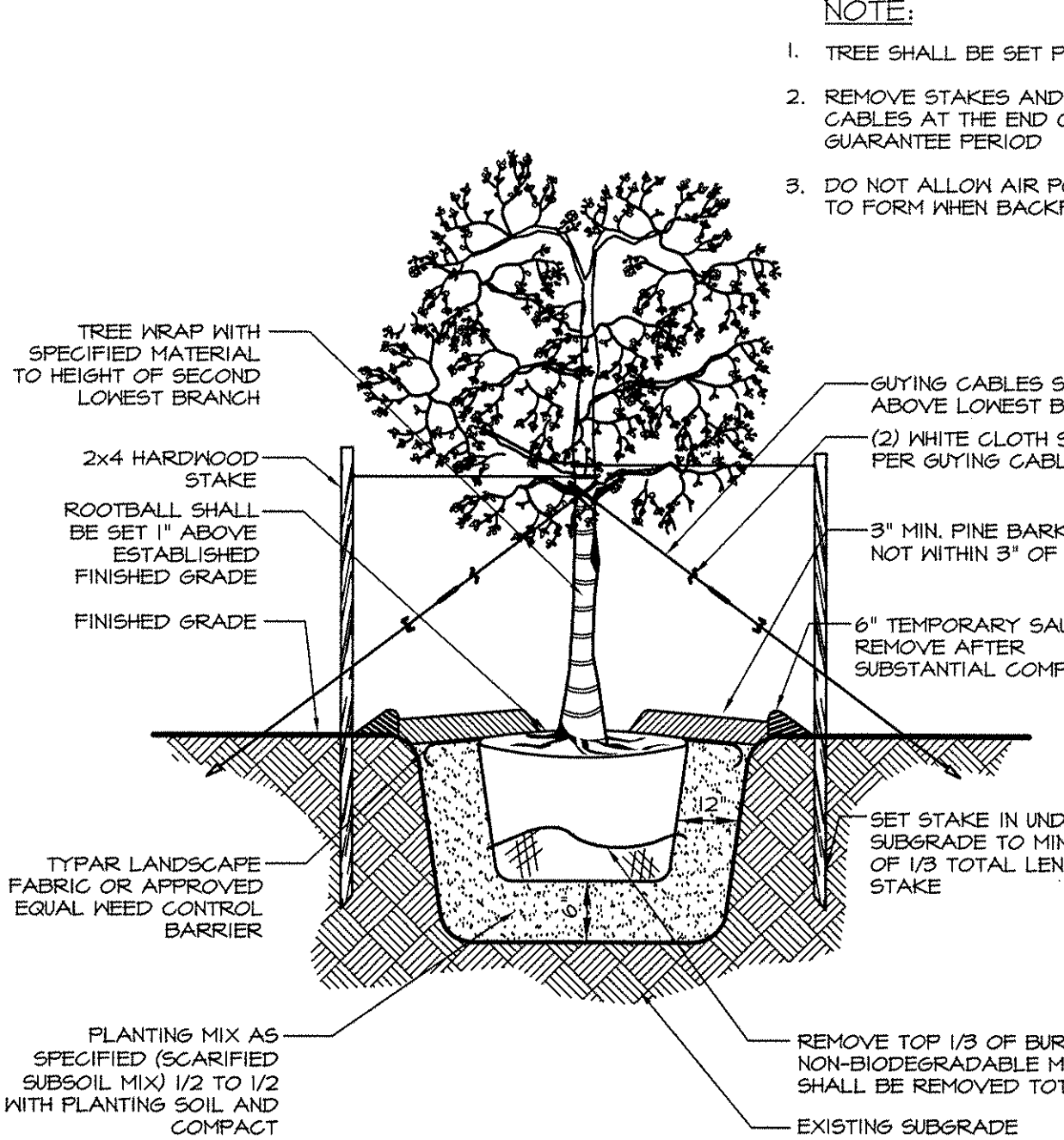
N.T.S.

FENCE

NDA, INC.



GUYS AND STAKING DETAIL

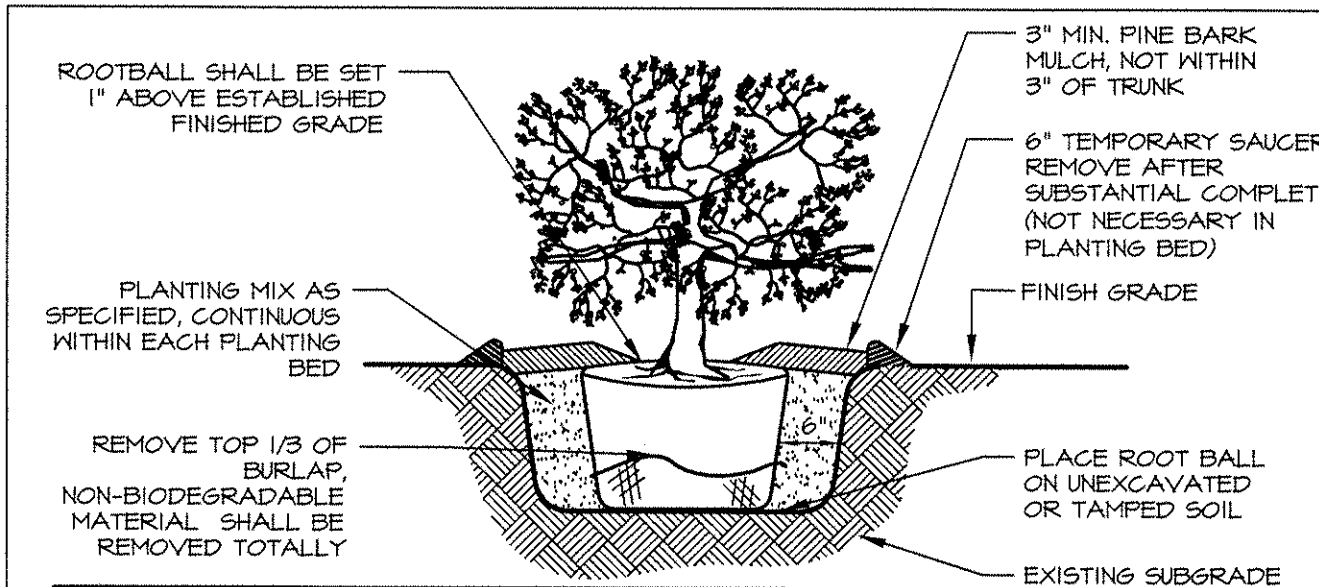


DECIDUOUS TREE PLANTING (FOR LARGE TREES)

N.T.S.

02400-04

NDA, INC.

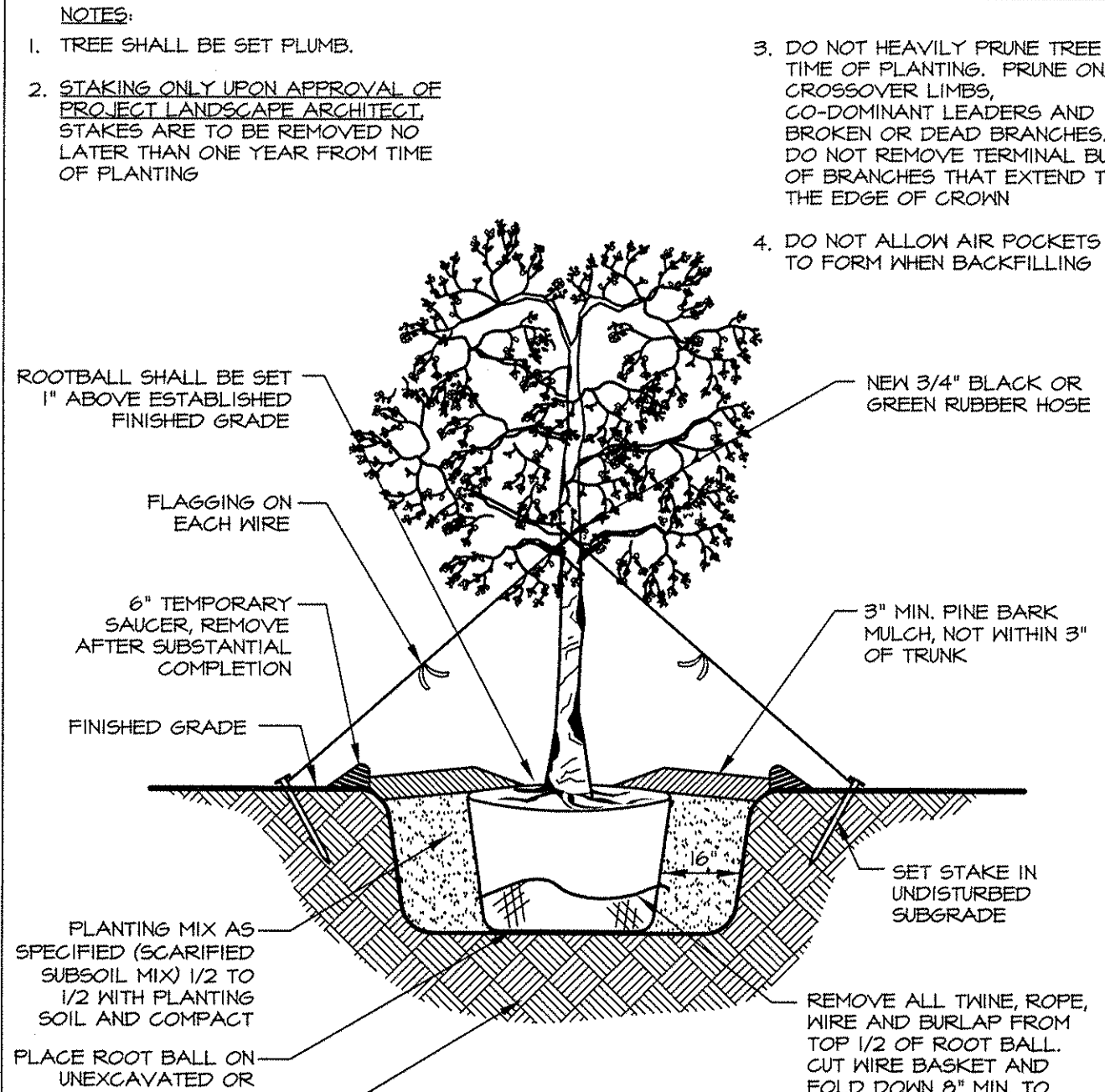


SHRUB PLANTING

N.T.S.

02400-02

NDA, INC.



DECIDUOUS TREE PLANTING

N.T.S.

02400-01

NDA, INC.

NOTES:

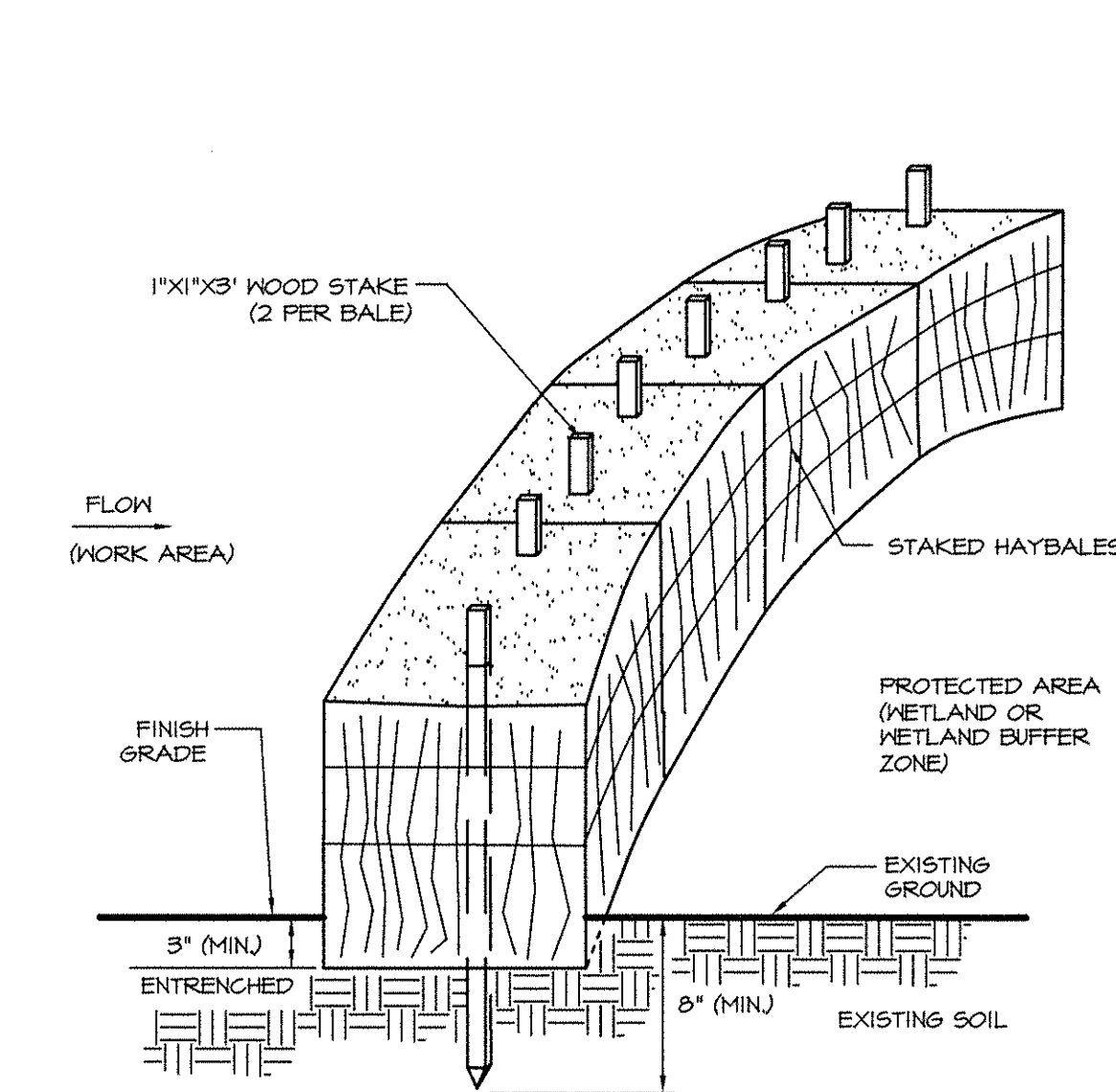
1. TO BE USED OFF OF PAVEMENT OR PRIOR TO PAVING ONLY. USE INLET SEDIMENT CONTROL DEVICE FOR PAVEMENT AREAS (SEE DETAIL).
2. CONSTRUCTION. MAINTAIN UNTIL PAVING BINDER COURSE IS COMPLETE OR A PERMANENT STAND OF GRASS HAS BEEN ESTABLISHED.
3. IF GRATE IS AGAINST EXISTING CURB THEN HAYBALES ARE TO BE PLACED AROUND THREE SIDES OF THE GRATE ONLY.
4. GRATE TO BE PLACED OVER FILTER FABRIC.
5. HAYBALES SHALL BE INSPECTED PERIODICALLY AND AFTER ALL STORM EVENTS AND REPAIR OR REPLACEMENT SHALL BE PERFORMED PROMPTLY AS NEEDED.

CATCH BASIN SEDIMENT TRAP

N.T.S.

02310-05

NDA, INC.



EROSION CONTROL BARRIER (ECB)

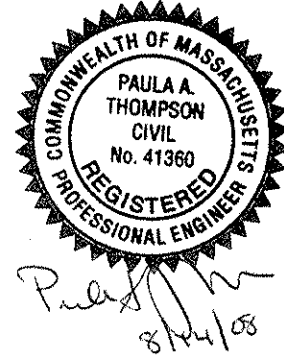
N.T.S.

02310-03

NDA, INC.

THIS DOCUMENT, AS AN INSTRUMENT OF SERVICE, IS THE SOLE PROPERTY OF WATERMAN DESIGN ASSOCIATES, INC. ITS USE BY THE OWNER FOR OTHER PROJECTS OR FOR COMPLETION OF THIS PROJECT BY OTHERS IS STRICTLY FORBIDDEN. DISTRIBUTION IN CONNECTION WITH THIS PROJECT SHALL NOT BE CONSTRUED AS PUBLICATION IN DEROGATION OF THE ENGINEERS RIGHTS. ©2008, WATERMAN DESIGN ASSOCIATES, INC.

REV.	DATE	DESCRIPTION	INT
1	08/14/08	NO CHANGES	PT
2		INITIAL ISSUE	



PREPARED BY:



WATERMAN DESIGN ASSOCIATES, INC.

31 East Main Street
Westborough, MA 01581

508.366.6552
508.366.6506 (fax)
watermandesign.com wda@wdasoc.com

OWNER:

InterNAP
Network Services

70 Inner Belt Road
Somerville, MA 02143

APPLICANT:

InterNAP
Network Services

70 Inner Belt Road
Somerville, MA 02143

TITLE:

DETAILS

50 INNER BELT ROAD

Somerville, MA
(Middlesex County)

SPECIAL PERMIT SITE PLAN
REVIEW

DATE:	08/07/08	SCALE:	AS NOTED
JOB NO.:	0671.01	DWN. BY:	
FILE NO.:	0671.001	CHK'D. BY:	
DRAWING NO.:	0671.001	SHEET:	C3.01

MATERIALS, MEANS AND METHODS SHALL COMPLY WITH THE CITY OF SOMERVILLE SPECIFICATIONS.

MUTCD REFERS TO MANUAL ON UNIFORM TRAFFIC CONTROL DEVICES FOR STREETS AND HIGHWAYS, 1988 EDITION (AS AMENDED) AND/OR STANDARD HIGHWAY SIGNS, 1988 EDITION (AS AMENDED), BOTH ISSUED BY THE USDOT/FHWA.

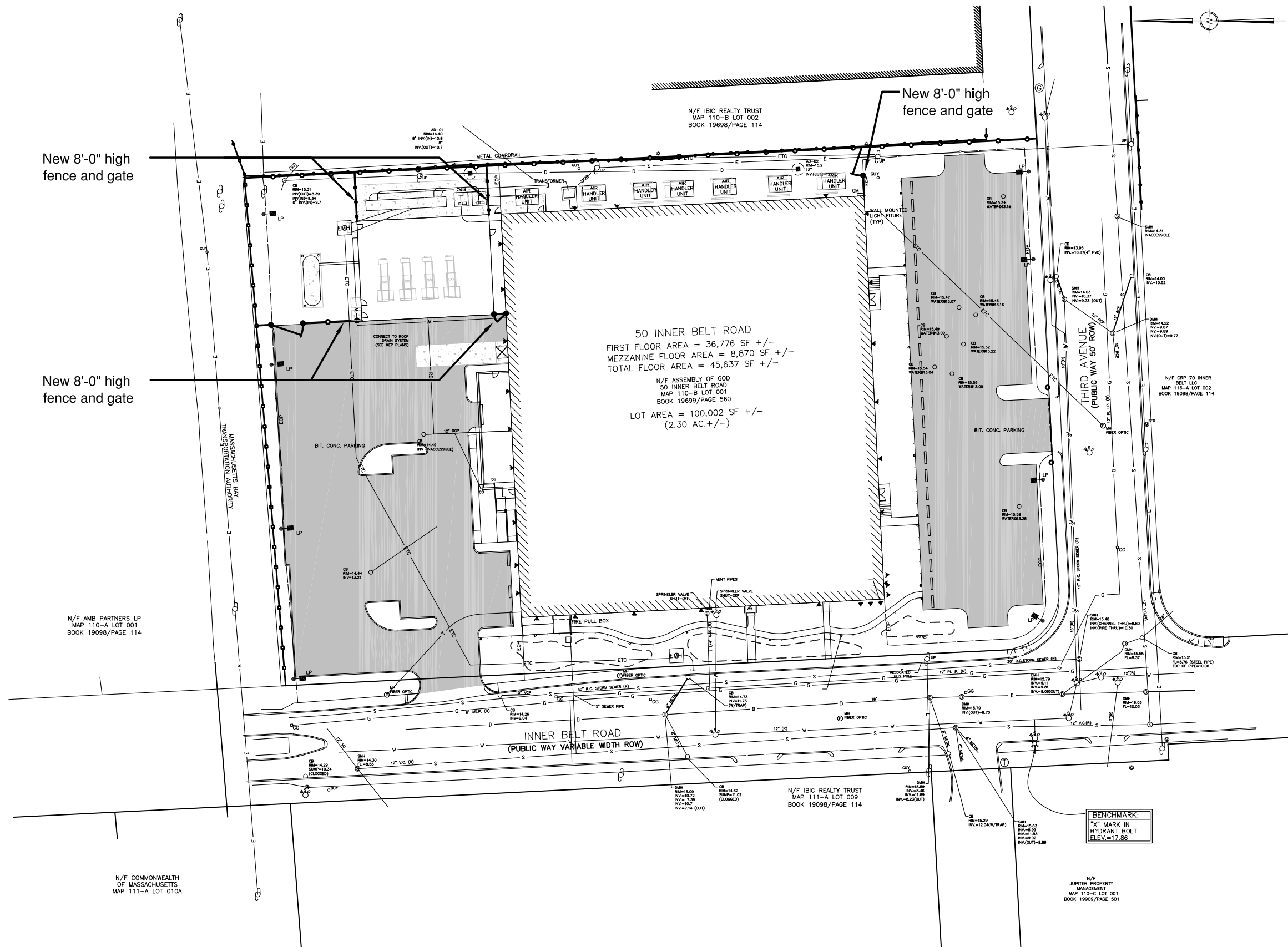
AASHTO REFERS TO AASHTO STANDARD SPECIFICATIONS FOR TRANSPORTATION MATERIALS AND METHODS OF SAMPLING AND TESTING, PART I - SPECIFICATIONS, TWENTIETH EDITION (AS AMENDED).

MHDSS REFERS TO MASS. HIGHWAY DEPT. STANDARD SPECIFICATIONS FOR HIGHWAYS AND BRIDGES, 1988 (AS AMENDED).

DPW REFERS TO LOCAL DEPARTMENT OF PUBLIC WORKS.

THIS DRAWING IS NOT FOR CONSTRUCTION UNTIL ISSUED FOR CONSTRUCTION BY WATERMAN DESIGN ASSOCIATES, INC.

MUTCOD REFERS TO MANUAL ON UNIFORM TRAFFIC CONTROL DEVICES FOR STREETS AND HIGHWAYS, 1980 EDITION (AS AMENDED) AND/OR STANDARD HIGHWAY SIGNS, 1973 (AS AMENDED), BOTH ISSUED BY THE FEDERAL ROAD ADMINISTRATION.
 ASHTO REFERS TO ASHTO STANDARD SPECIFICATIONS FOR TRANSPORTATION MATERIALS AND METHODS OF SAMPLING AND TESTING, PART I - SPECIFICATIONS, TENTH EDITION (AS AMENDED).
 MISSO REFERS TO MISSO HIGHWAY DEPT. STANDARD SPECIFICATIONS FOR HIGHWAYS AND BRIDGES, 1982 (AS AMENDED).
 DPH REFERS TO LOCAL DEPARTMENT OF PUBLIC WORKS.
 THIS DRAWING IS NOT FOR CONSTRUCTION UNTIL ISSUED FOR CONSTRUCTION BY WATERMAN DESIGN ASSOCIATES, INC.



THIS DOCUMENT, AS AN INSTRUMENT OF SERVICE, IS THE SOLE PROPERTY OF WATERMAN DESIGN ASSOCIATES, INC. ITS USE BY THE OWNER FOR OTHER PROJECTS OR FOR COMPLETION OF THIS PROJECT BY OTHERS IS STRICTLY FORBIDDEN. DISTRIBUTION IN CONNECTION WITH THIS PROJECT SHALL NOT BE CONSTRUED AS PUBLICATION IN DEROGATION OF THE ENGINEER'S RIGHTS.
©2008, WATERMAN DESIGN ASSOCIATES, INC.

B	08/14/08	SOMERVILLE SPECIFICATIONS
A		INITIAL ISSUE
REV.	DATE	DESCRIPTION
		INT.

PREPARED BY:

Waterman Design Associates, Inc.
31 East Main Street
Westborough, MA 01581
508.366.6552
508.366.6500 (fax)
watermandesign.com wda@wdaassoc.com

OWNER:
InterNAP Network Services
70 Inner Belt Road
Somerville, MA 02143
APPLICANT:
InterNAP Network Services
70 Inner Belt Road
Somerville, MA 02143

TITLE:
50 INNER BELT ROAD
Somerville, MA
(Middlesex County)
SPECIAL PERMIT SITE PLAN
REVIEW

0	20	40	60
DATE:	08/07/08	SCALE:	1" = 20'
JOB NO.:	0671201	DWN. BY:	
FILE NO.:	0671200	CHK'D BY:	
DRAWING NO.:	0671204B	SHEET:	EX-1

THIS DRAWING IS NOT FOR CONSTRUCTION UNTIL ISSUED FOR CONSTRUCTION BY WATERMAN DESIGN ASSOCIATES, INC.