

PETER  
QUINN  
ARCHI  
TECTS

ARCHITECTURE  
PLANNING  
COMMUNITY DESIGN

PETER QUINN ARCHITECTS LLC  
1955 MASS AVE, SUITE 4  
CAMBRIDGE, MA 02140  
PH 617-354-3989 FAX 617-868-0280

BUILDING A | BUILDING B

5TH FL

4TH FL

561 WINDSOR ST  
SOMERVILLE, MA

3RD FL

2ND FL

FIRST FL

PROPOSED FRONT(NORTH) ELEVATION  
SCALE: 1/16" = 1'-0"

METAL PANELING  
( PHASE I )

SCULPTURAL MAIN ENTRY  
CANOPY

METAL  
PANELING  
( PHASE I )

TAZA CHOCOLATE  
ENTRY CANOPY  
SEE SHEET A3

NOTE: EXISTING LANDSCAPING NOT SHOWN IN ELEVATION  
SEE SHEET A7

DRAWING TITLE

PROPOSED  
FRONT  
ELEVATION  
- PHASE 1

SCALE AS NOTED

REVISION / ISSUE DATE

SP REV#1 7 MAY 2010

SPECIAL PERMIT 22 MAR 2010

DRAWN BY JH REVIEWED BY PQ

SHEET

A-1

EXT'G MASONRY

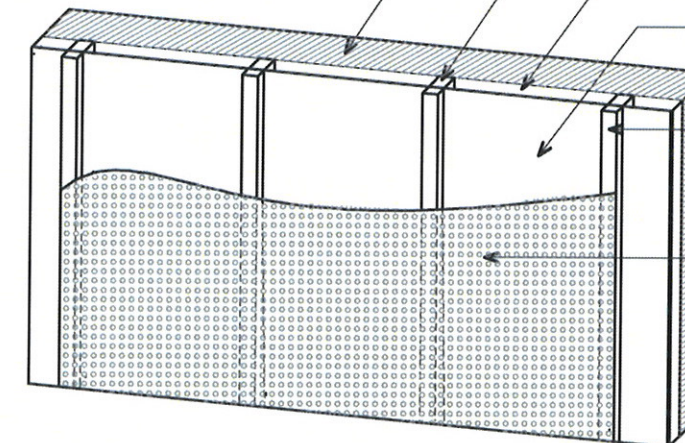
METAL STUD SYSTEM

INSULATED CAVITY

PLYWOOD SHEATHING,  
PAINTED IN BLACK

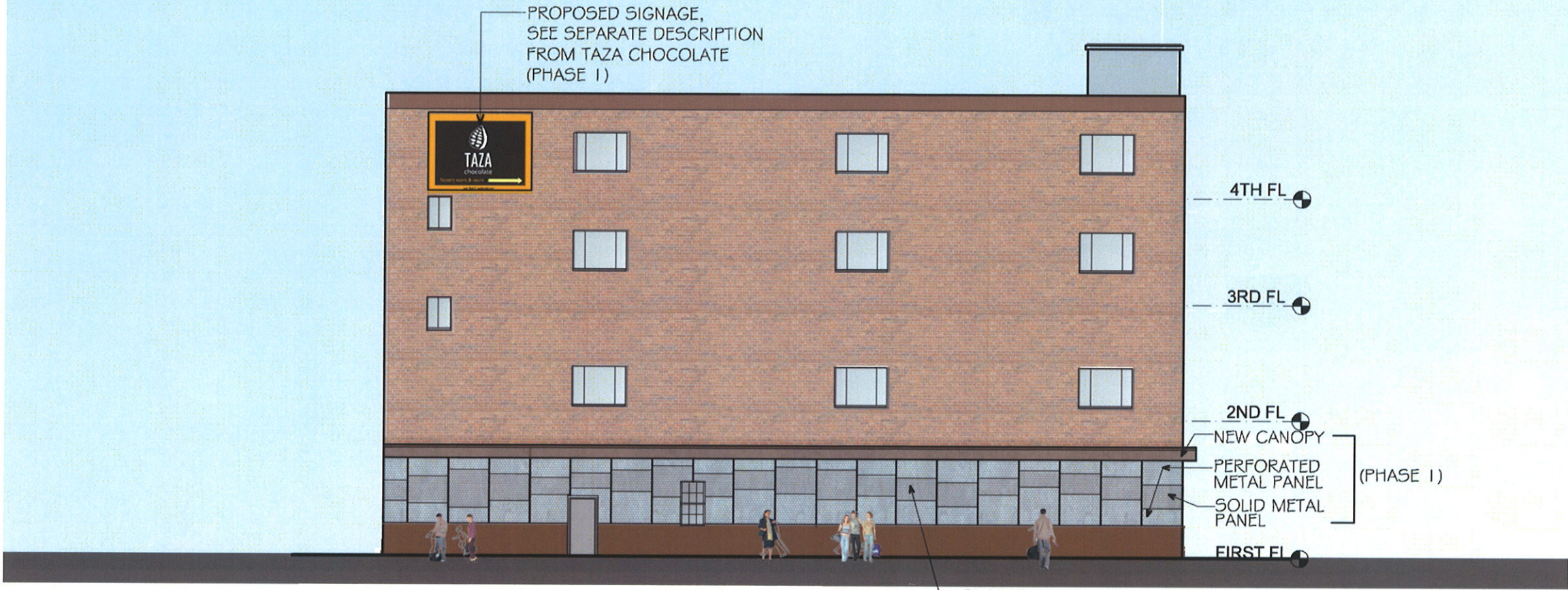
WOOD FURRING @ 2'-0" O.C.  
PAINTED IN BLACK

PERFORATED METAL SCREEN

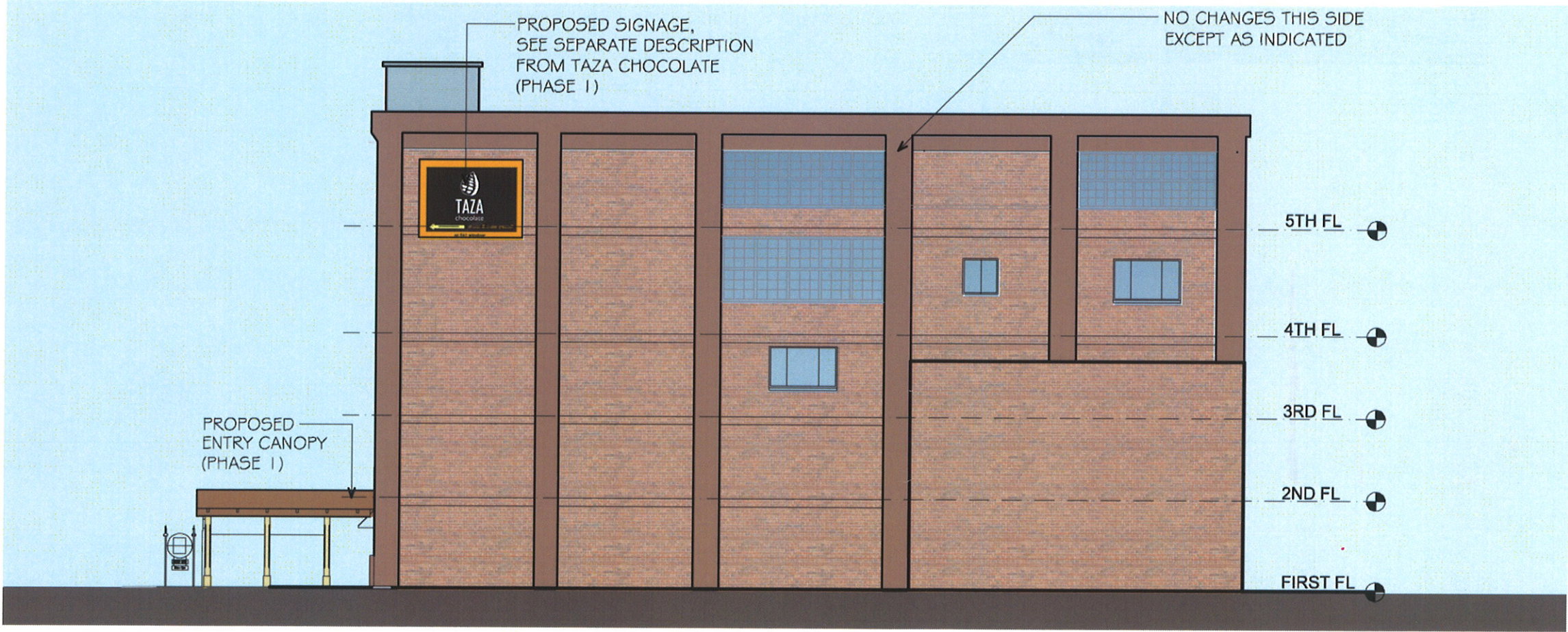


METAL PANEL DETAIL  
SCALE: 3/16" = 1'-0"





PROPOSED LEFT(EAST) ELEVATION  
SCALE: 1/16" = 1'-0"



PROPOSED RIGHT ELEVATION  
SCALE: 1/20" = 1'-0"

PETER  
QUINN  
ARCHI  
TECTS

ARCHITECTURE  
PLANNING  
COMMUNITY DESIGN

PETER QUINN ARCHITECTS LLC  
1955 MASS AVE, SUITE 4  
CAMBRIDGE, MA 02140  
PH 617-354-3989 FAX 617-968-0280

PROJECT

561 WINDSOR ST  
SOMERVILLE, MA

PREPARED FOR

DRAWING TITLE

PROPOSED  
LEFT & RIGHT  
ELEVATIONS  
-PHASE 1

SCALE AS NOTED

REVISION / ISSUE DATE

SPECIAL PERMIT 7 MAY 2010

SPECIAL PERMIT 22 MAR 2010

DRAWN BY  
JH

REVIEWED BY  
PQ

SHEET

A-2



PETER  
QUINN  
ARCHI  
TECTS

ARCHITECTURE  
PLANNING  
COMMUNITY DESIGN

PETER QUINN ARCHITECTS LLC  
1955 MASS AVE, SUITE 4  
CAMBRIDGE, MA 02140  
PH 617-354-3989 FAX 617-968-0280

PROJECT

561 WINDSOR ST  
SOMERVILLE, MA

5TH FL

PREPARED FOR

4TH FL

3RD FL

DRAWING TITLE

PROPOSED  
FRONT  
ELEVATION  
- PHASE 2

FIRST FL

SCALE AS NOTED

REVISION / ISSUE DATE

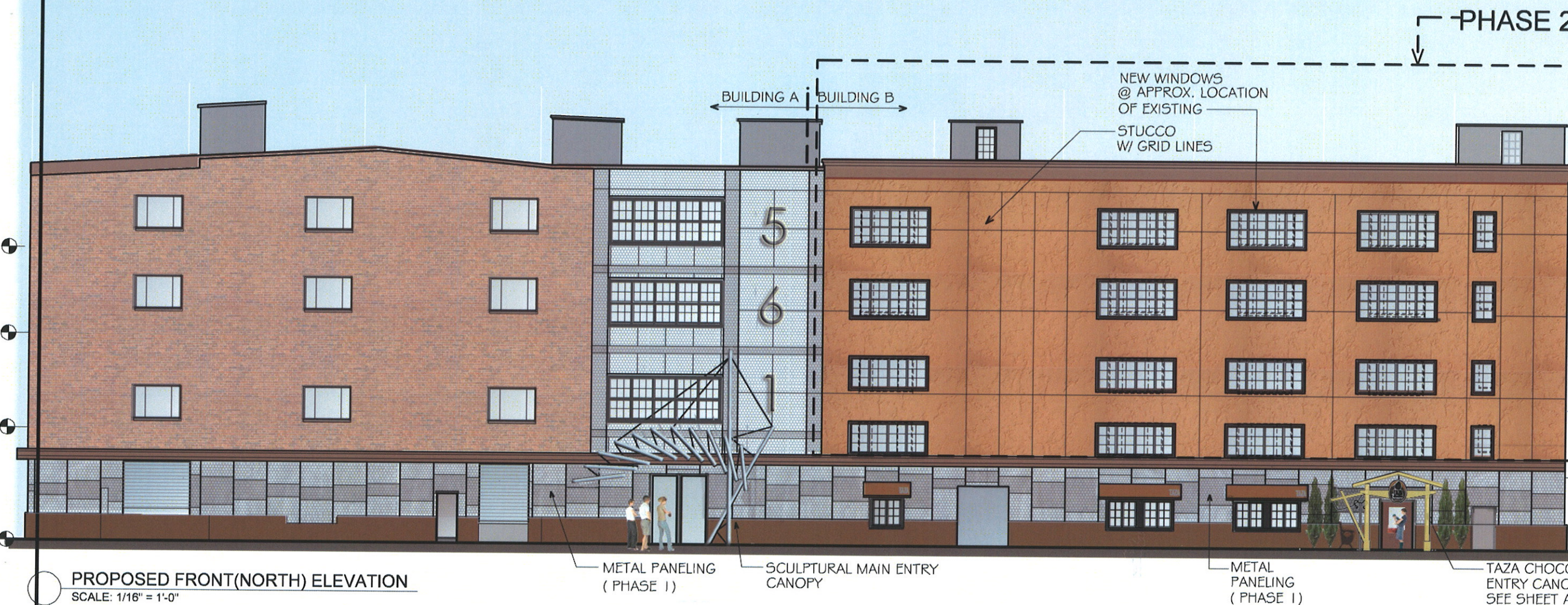
SP REV#1 7 MAY 2010

SPECIAL PERMIT 22 MAR 2010

DRAWN BY JH REVIEWED BY PQ

SHEET

A-3



PROPOSED FRONT(NORTH) ELEVATION  
SCALE: 1/16" = 1'-0"



PROJECT

561 WINDSOR ST  
SOMERVILLE, MA

5TH FL

PREPARED FOR

4TH FL

3RD FL

DRAWING TITLE

PROPOSED  
FRONT  
ELEVATION  
- PHASE 3

FIRST FL

SCALE AS NOTED

REVISION / ISSUE DATE

SP REV#1 7 MAY 2010

SPECIAL PERMIT 22 MAR 2010

DRAWN BY JH REVIEWED BY PQ

SHEET

A-4

-PHASE 3

NEW WINDOWS  
@ APPROX. LOCATION  
OF EXISTING

STUCCO  
W/ GRID LINES

BUILDING A BUILDING B

SEE PHASE 2

5

6

1

METAL PANELING  
( PHASE 1 )

SCULPTURAL MAIN ENTRY  
CANOPY

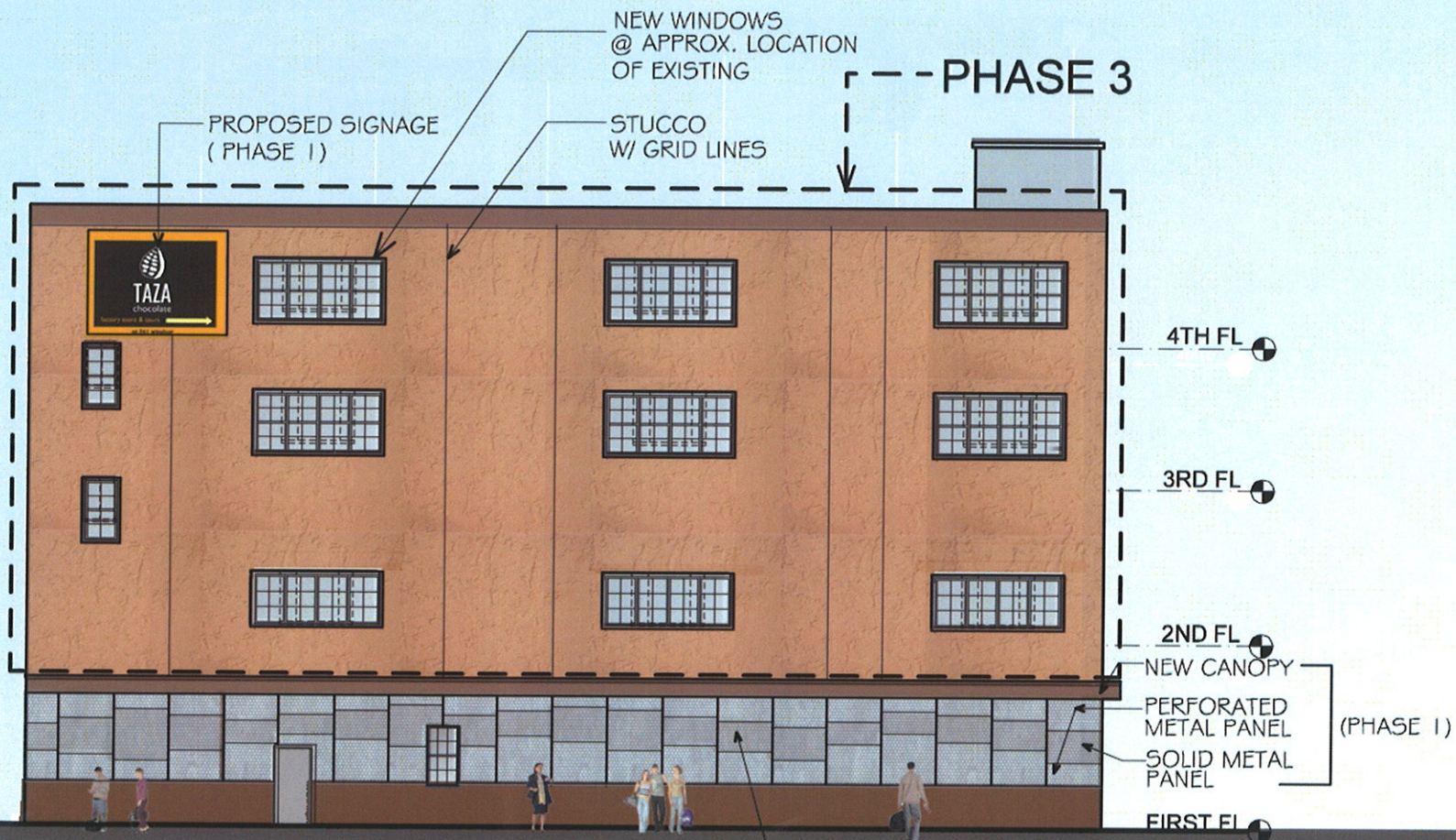
METAL  
PANELING  
( PHASE 1 )

TAZA CHOCOLATE  
ENTRY CANOPY  
SEE SHEET A3

PROPOSED FRONT(NORTH) ELEVATION

SCALE: 1/16" = 1'-0"





PROPOSED LEFT(EAST) ELEVATION  
SCALE: 1/16" = 1'-0"

SIMILAR TO FRONT

PETER  
QUINN  
ARCHI  
TECTS

ARCHITECTURE  
PLANNING  
COMMUNITY DESIGN

PETER QUINN ARCHITECTS LLC  
1955 MASS AVE, SUITE 4  
CAMBRIDGE, MA 02140  
PH 617-354-3666 FAX 617-968-0280

PROJECT

561 WINDSOR ST  
SOMERVILLE, MA

PREPARED FOR

DRAWING TITLE

PROPOSED  
LEFT  
ELEVATION  
- PHASE 3

SCALE AS NOTED

REVISION / ISSUE DATE

SP REV#1 7 MAY 2010

SPECIAL PERMIT 22 MAR 2010

DRAWN BY JH REVIEWED BY PQ

SHEET

A-5





PETER  
QUINN  
ARCHI  
TECTS

ARCHITECTURE  
PLANNING  
COMMUNITY DESIGN

PETER QUINN ARCHITECTS LLC  
1955 MASS AVE, SUITE 4  
CAMBRIDGE, MA 02140  
PH 617-354-3888 FAX 617-868-0280

PROJECT

561 WINDSOR ST  
SOMERVILLE, MA

PREPARED FOR

DRAWING TITLE

TAZA  
CHOCOLATE  
CANOPY ENTRY-  
RENDERING

SCALE AS NOTED

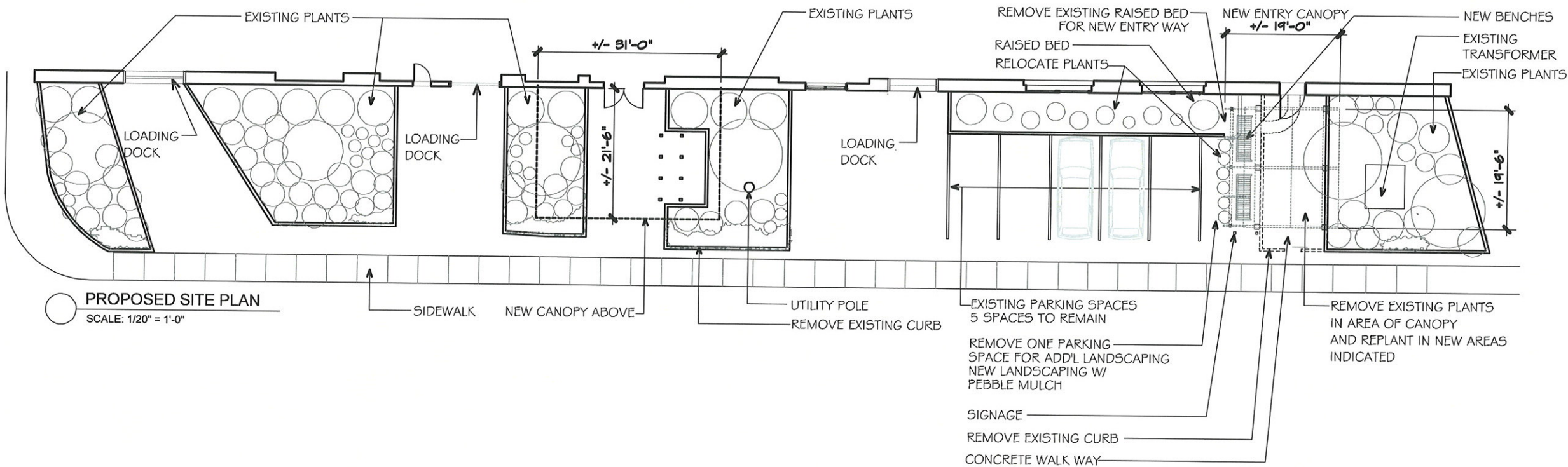
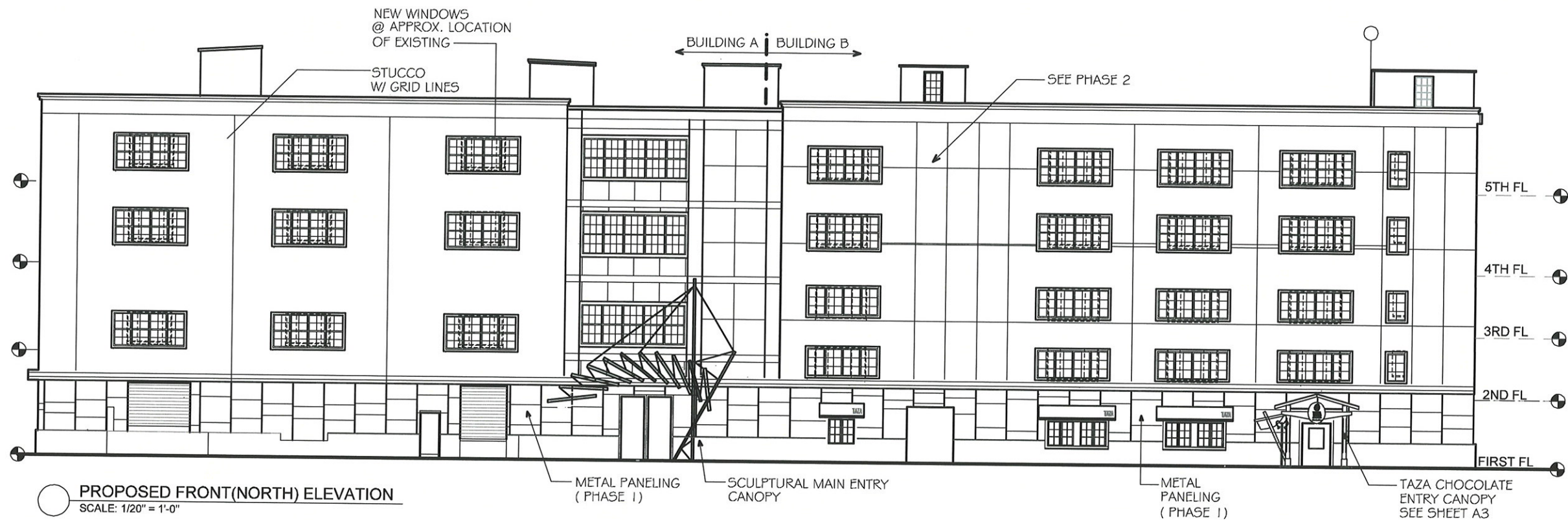
REVISION / ISSUE DATE

SP REV#1	7 MAY 2010
SPECIAL PERMIT	04 MAY 2010
DRAWN BY EA	REVIEWED BY PQ

SHEET

A-6





PETER  
QUINN  
ARCHI  
TECTS

ARCHITECTURE  
PLANNING  
COMMUNITY DESIGN

PETER QUINN ARCHITECTS LLC  
1955 MASS AVE, SUITE 4  
CAMBRIDGE, MA 02140  
PH 617-354-3989 FAX 617-868-0280

PROJECT

561 WINDSOR ST  
SOMERVILLE, MA

PREPARED FOR

DRAWING TITLE

PROPOSED  
SITE PLAN

SCALE AS NOTED

REVISION / ISSUE DATE

SP REV#1 7 MAY 2010

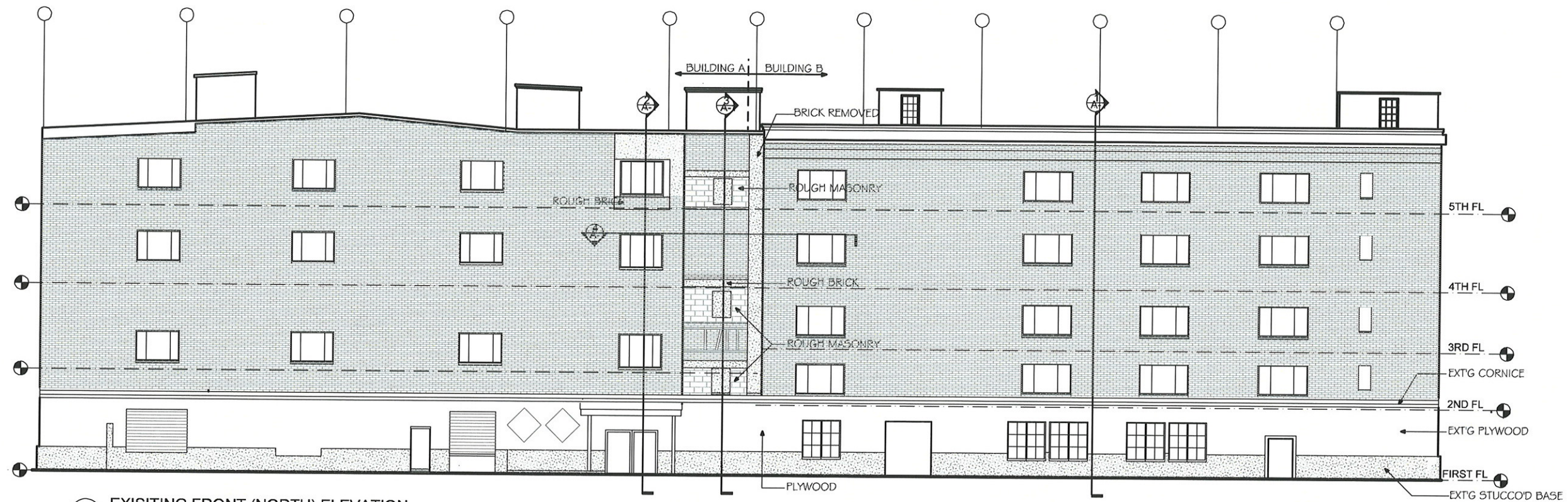
SPECIAL PERMIT 22 MAR 2010

DRAWN BY JH REVIEWED BY PQ

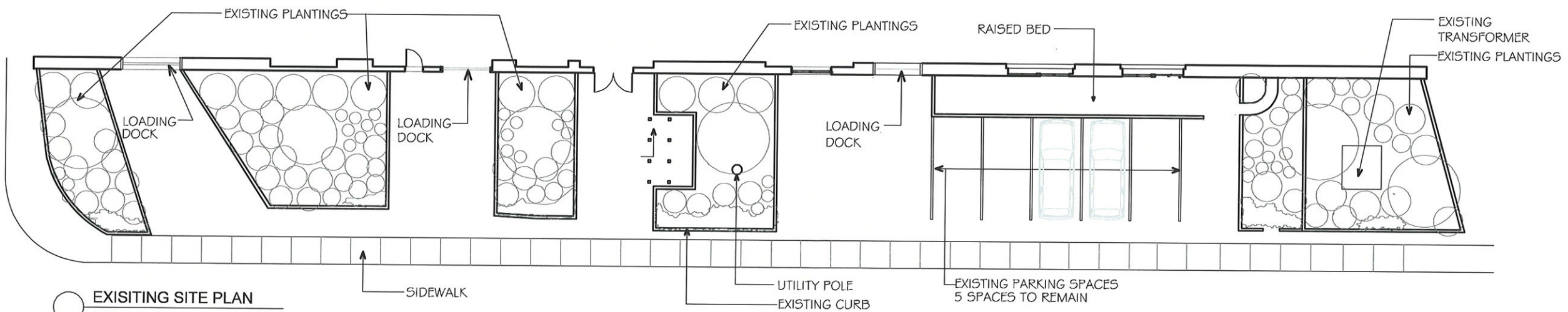
SHEET

A-7





EXISTING FRONT (NORTH) ELEVATION  
SCALE: 1/20" = 1'-0"



EXISTING SITE PLAN  
SCALE: 1/20" = 1'-0"

PETER  
QUINN  
ARCHI  
TECTS

ARCHITECTURE  
PLANNING  
COMMUNITY DESIGN

PETER QUINN ARCHITECTS LLC  
1955 MASS AVE, SUITE 4  
CAMBRIDGE, MA 02140  
PH 617-354-3989 FAX 617-868-0280

PROJECT

561 WINDSOR ST  
SOMERVILL, MA

PREPARED FOR

DRAWING TITLE

EXISTING  
FRONT(NORTH)  
ELEVATION  
&SITE PLAN  
(NORTH)

SCALE AS NOTED

REVISION / ISSUE DATE

SP REV#1 7 MAY 2010

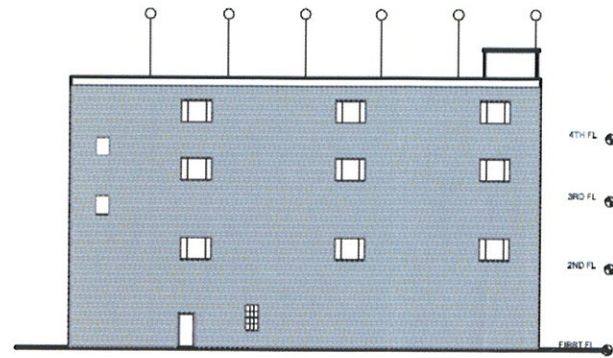
SPECIAL PERMIT 22 MAR 2010

DRAWN BY JH REVIEWED BY PQ

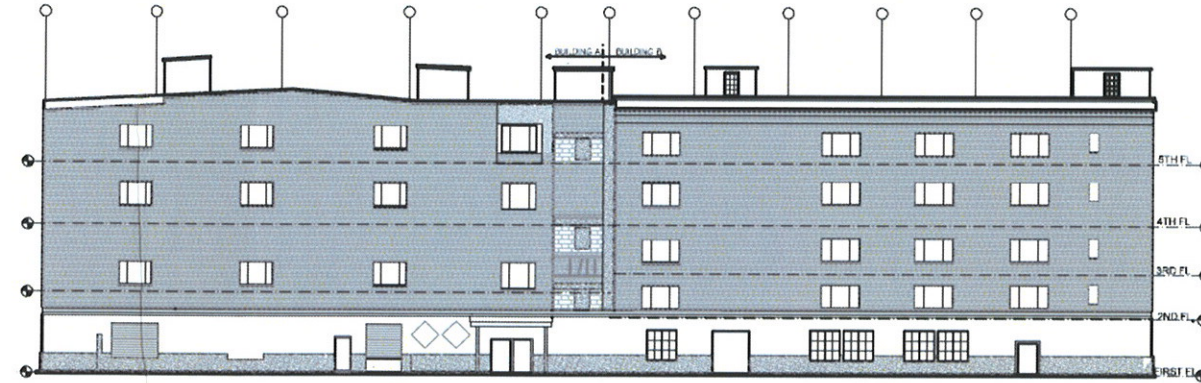
SHEET

E-1

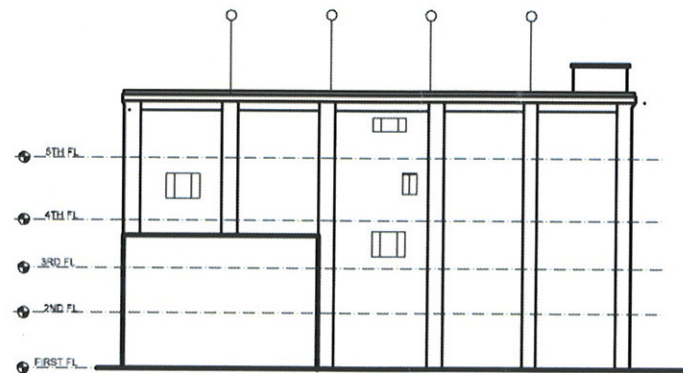




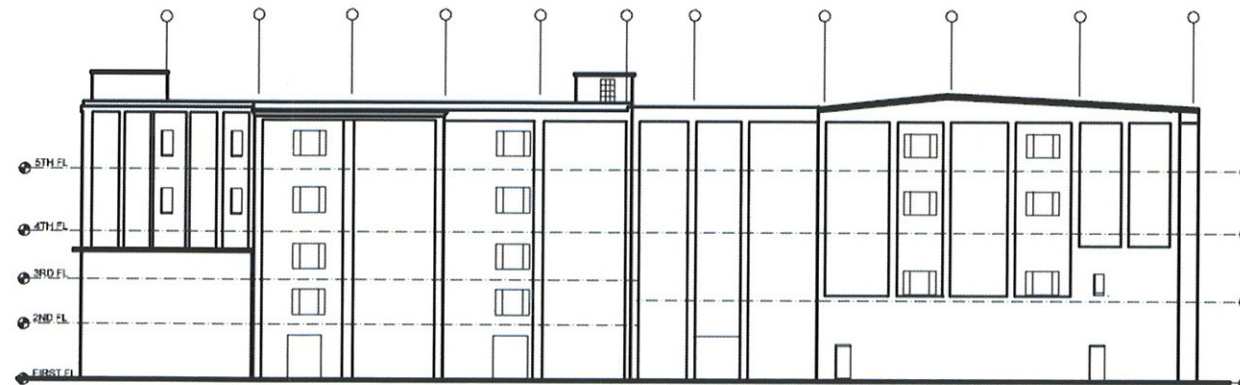
EXISTING LEFT (EAST) ELEVATION  
SCALE: 1/40" = 1'-0"



EXISTING FRONT ELEVATION - SEE E1  
SCALE: 1/40" = 1'-0"



EXISTING RIGHT ELEVATION  
SCALE: 1/40" = 1'-0"



EXISTING REAR ELEVATION  
SCALE: 1/40" = 1'-0"

PETER  
QUINN  
ARCHI  
TECTS

ARCHITECTURE  
PLANNING  
COMMUNITY DESIGN

PETER QUINN ARCHITECTS LLC  
1955 MASS AVE, SUITE 4  
CAMBRIDGE, MA 02140  
PH 617-354-3986 FAX 617-888-0280

PROJECT  
561 WINDSOR ST  
SOMERVILLE, MA

PREPARED FOR

DRAWING TITLE  
EXISTING  
ELEVATIONS

SCALE AS NOTED

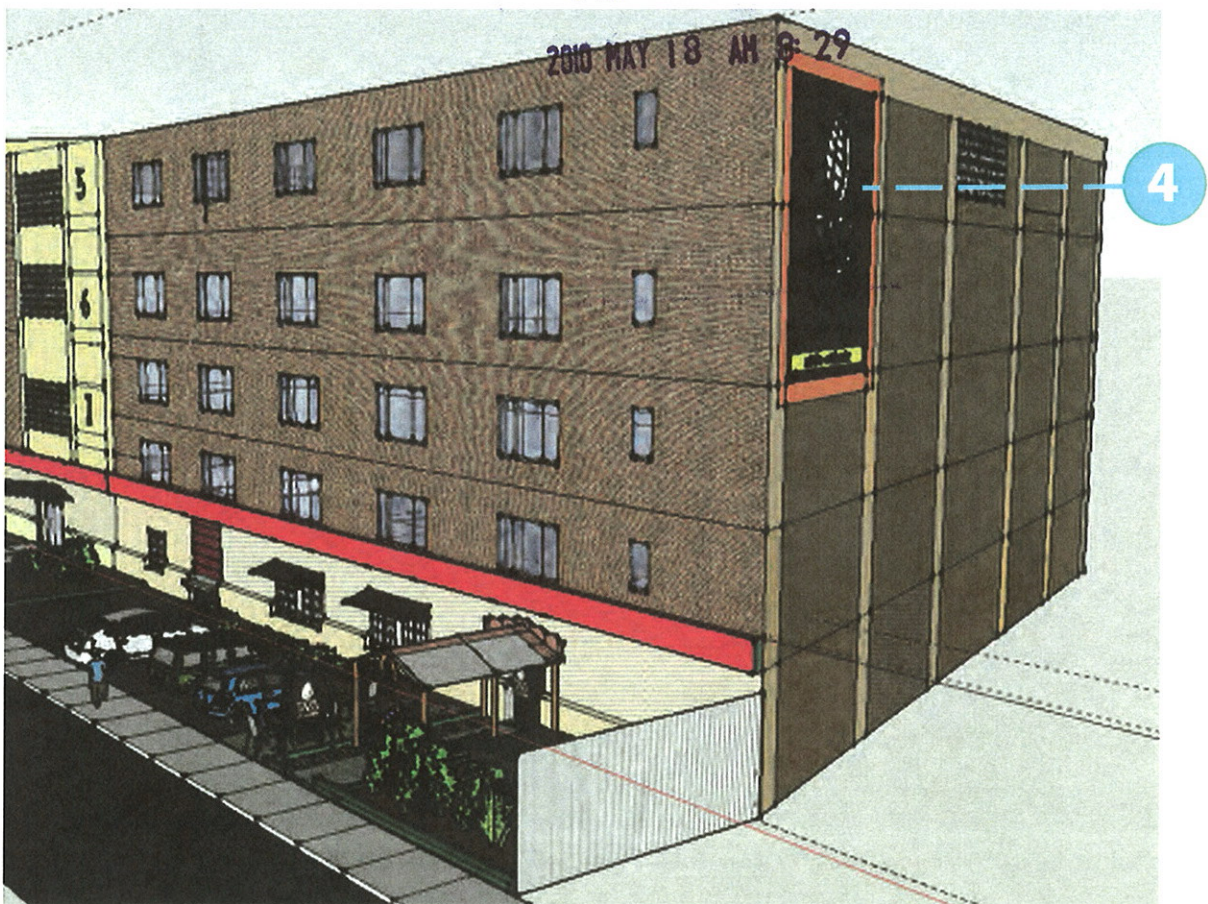
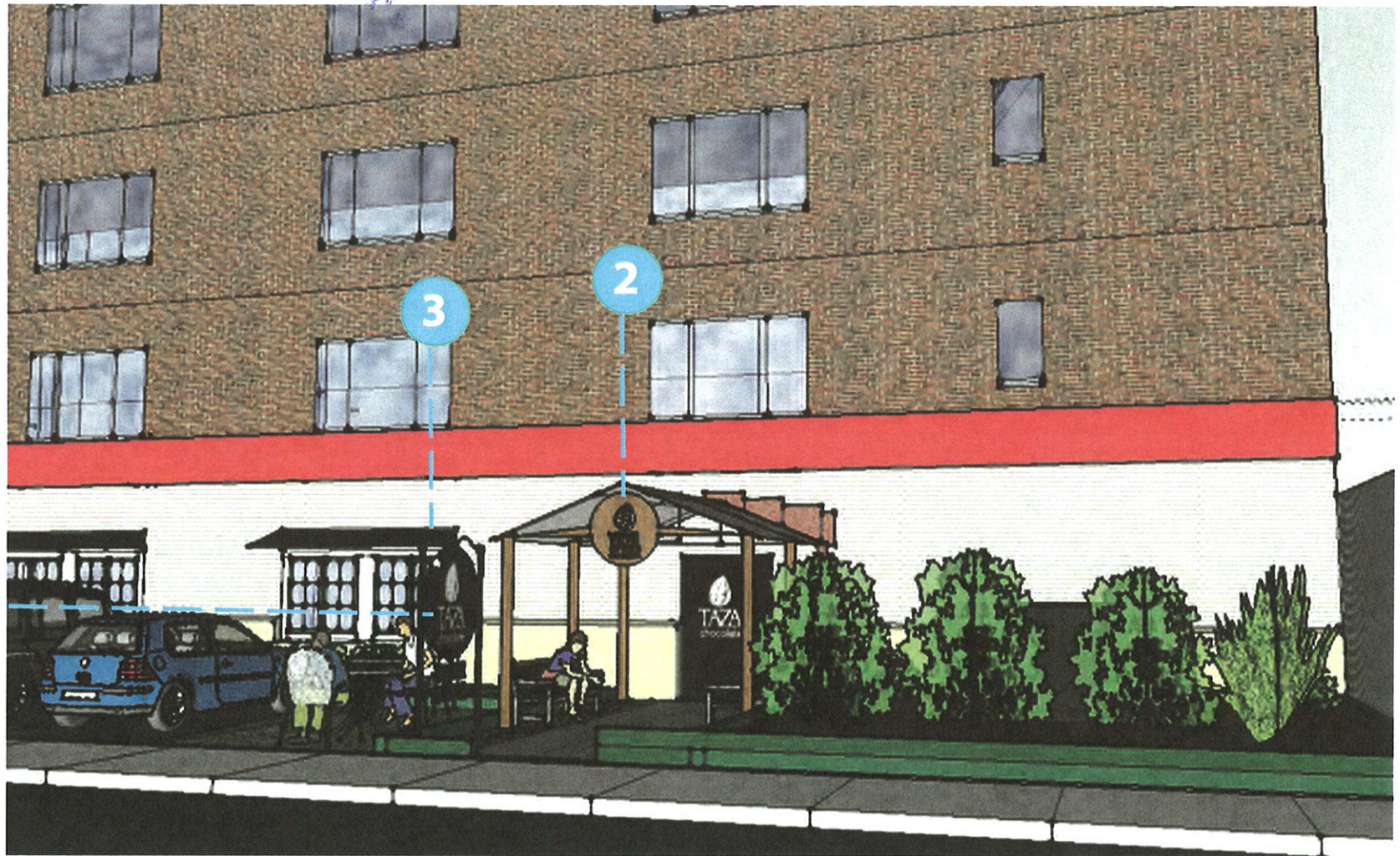
REVISION / ISSUE DATE

SP REV#1	7 MAY 2010
SPECIAL PERMIT	22 MAR 2010
DRAWN BY JH	REVIEWED BY PQ

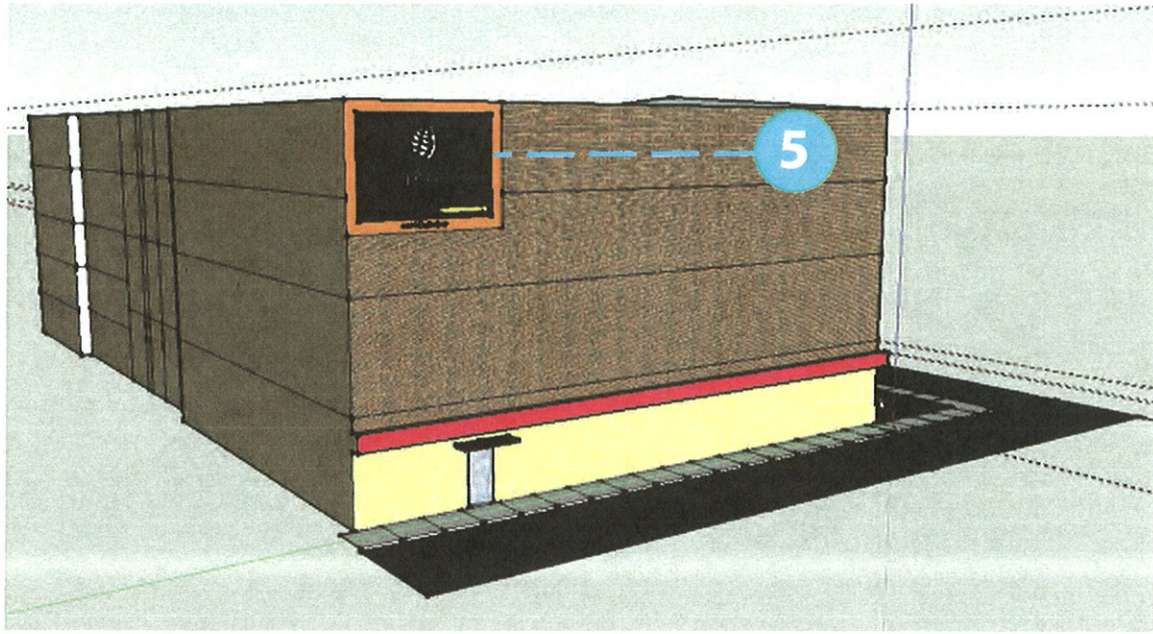
SHEET

E-2





SIGNAGE LIST			
#	Name	Location	
1	Free-standing Sign	Entry, perpendicular to Windsor St.	4' Diameter round free-standing sign. Posts are wrought iron sunk into concrete. Sign is painted steel with logo pinned off and painted white. In-ground lighting. 2 on each side.
2	Retail Entrance Sign	Above Taza retail store entrance	3' diameter round wood sign—with natural stain and logo/letters pinned off the round base.
3	Storefront Awnings	Retail store windows—2-Awnings	Dark brown canvas awnings with white vinyl logo on the right hand corner of the awning.
4	West Mural	West facing side of 561 Windsor	Ghost mural, painted directly on building. Building is protected with green graffiti coat before it is painted.
5	East Mural	East facing side of 561 Windsor	Ghost mural, painted directly on building. Building is protected with green graffiti coat before it is painted.





# 1 Free-standing Sign



**Dimensions:** 4'-0" in Diameter. 1/2" thick.

**Material:** Painted Steel. Logo is painted metal and raised off of the round metal disc. Entire sign is treated with green graffiti coat to protect it from vandilism.

# 2 Retail Entrance Sign



**Dimensions:** 3'-0" in Diameter. 1/2" thick.

**Material:** Sign-base is stained dark brown. Logo is pinned epoxy resin, painted white and pinned off of the wood.

RECEIVED  
S.P.C.D. AND  
PLANNING DEPT.  
2010 MAY 18 AM 8:29

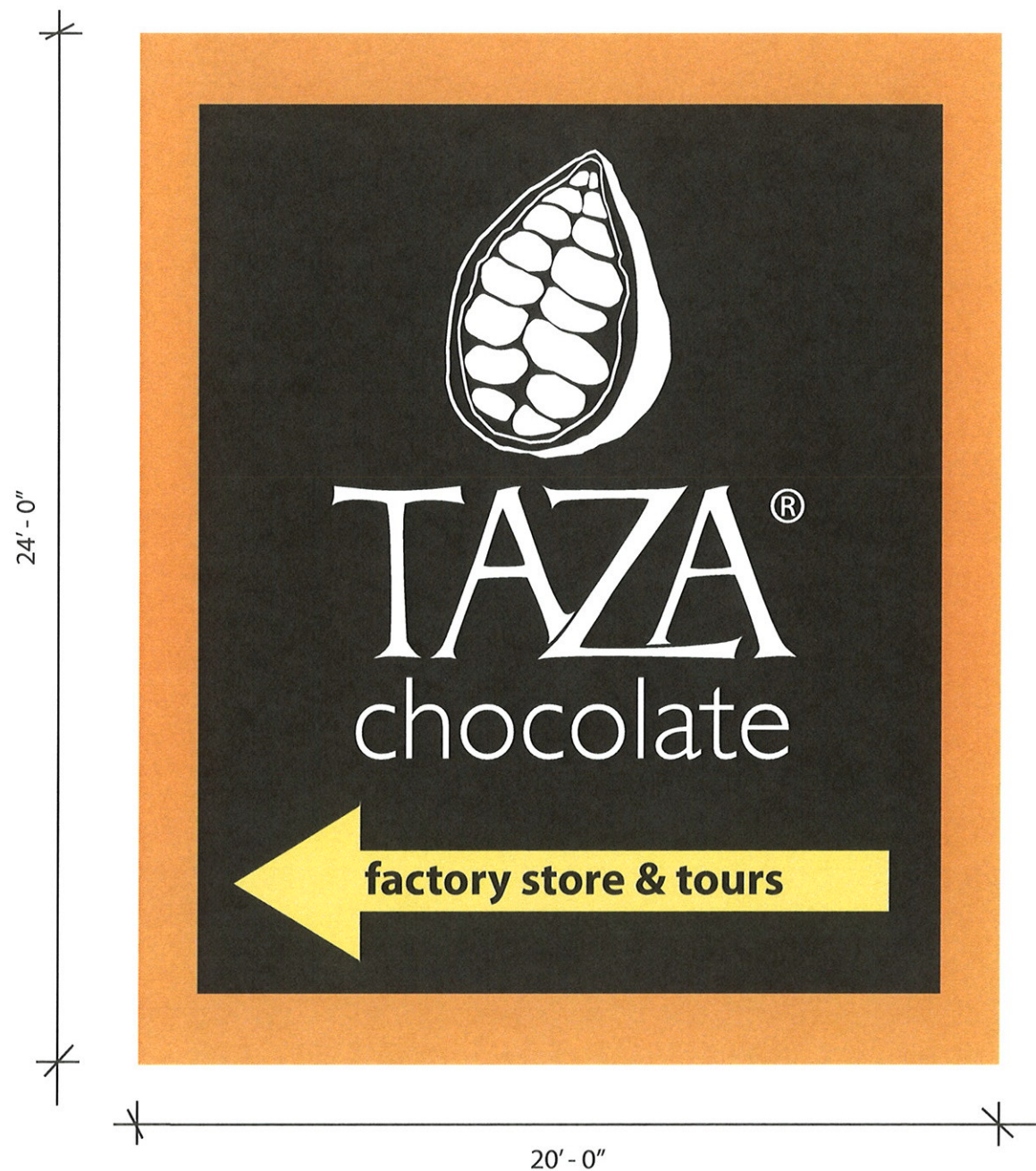
SIGNAGE LIST		
#	Name	Location
1	Free-standing Sign	Entry, perpendicular to Windsor St.
2	Retail Entrance Sign	Above Taza retail store entrance
3	Storefront Awnings	2—above retail storefront windows





4

## West Mural



**Dimensions:** 24'-0" H x 20'-0 W

**Material:** Ghost mural, painted directly on building. Building is protected with green graffiti coat before it is painted.



Examples of Ghost Murals



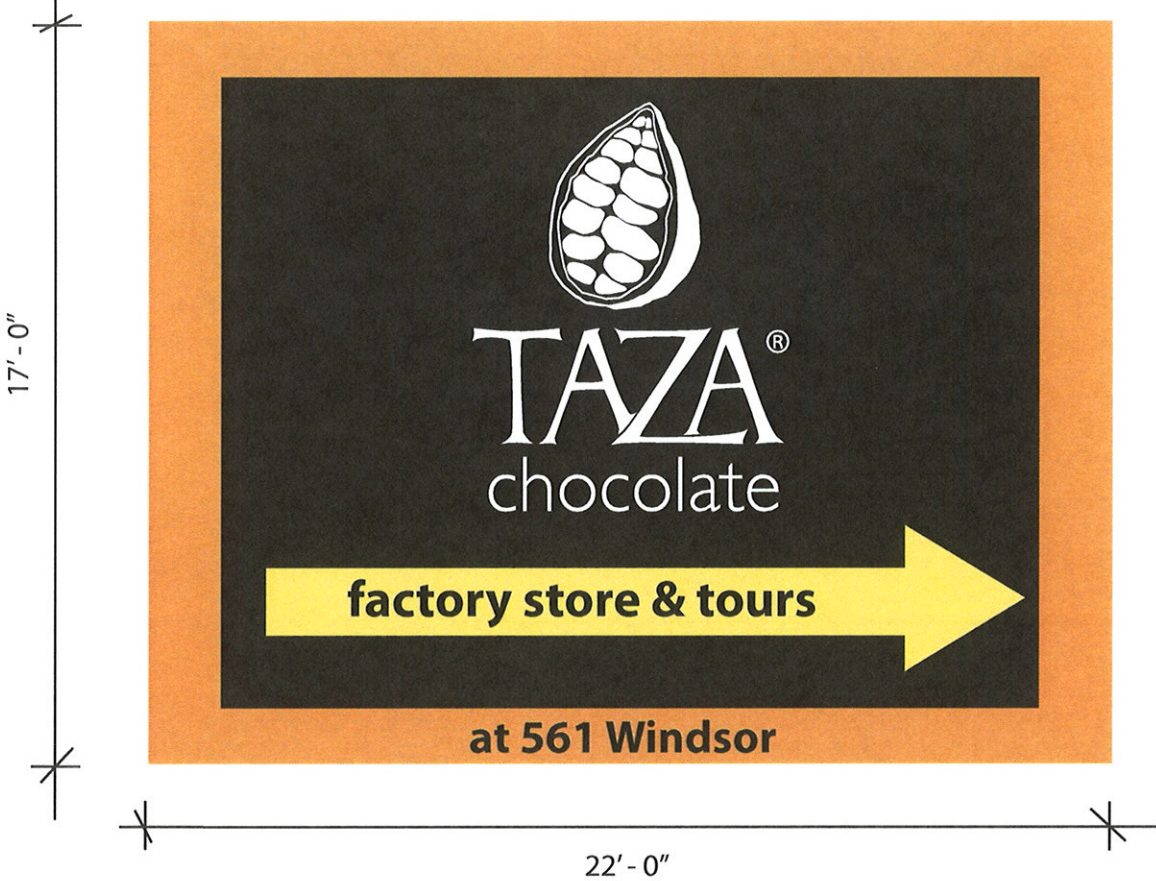
### SIGNAGE LIST

#	Name	Location
4	West Mural	West facing side of 561 Windsor



5

East Mural

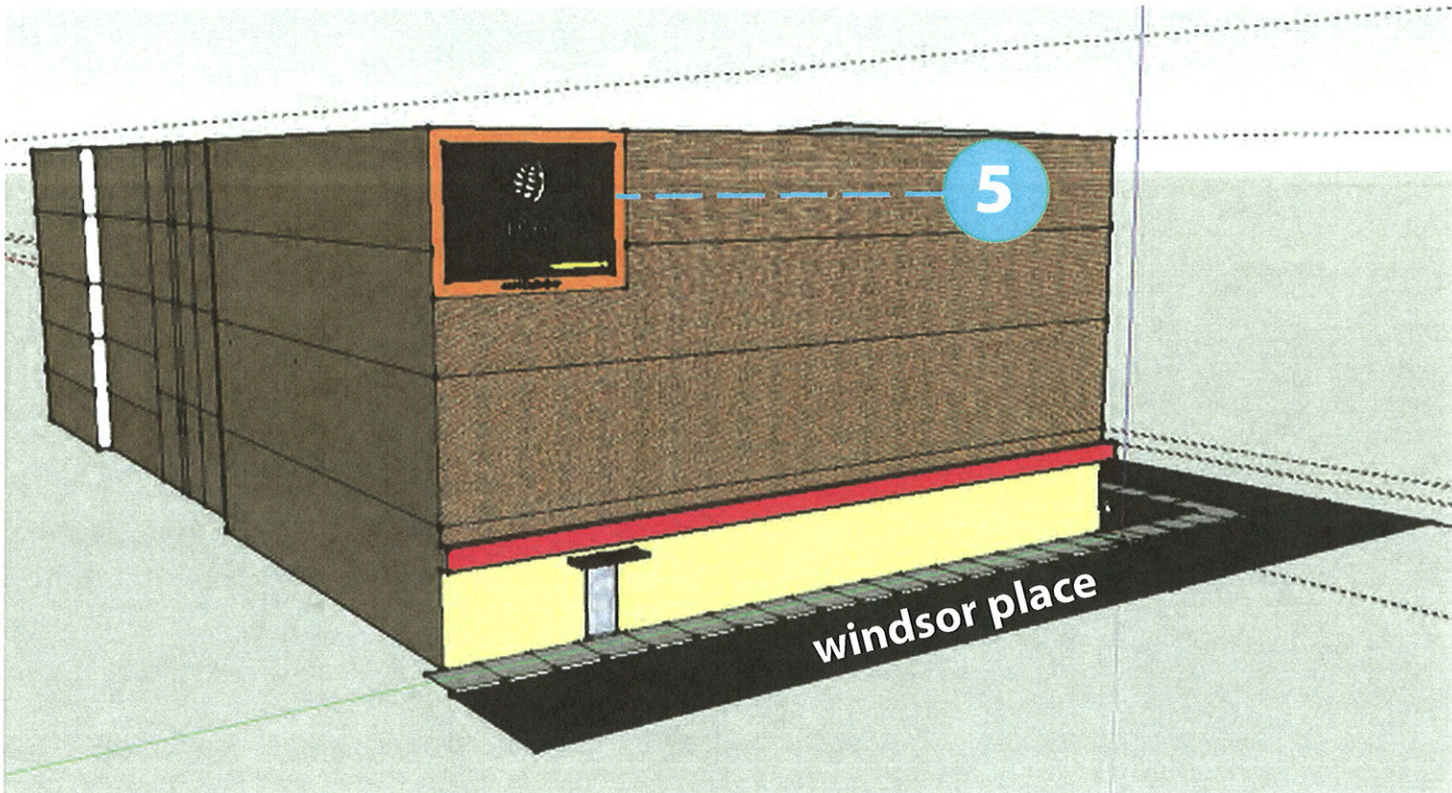


**Dimensions:** 17'-0" H x 22'-0 W

**Material:** Ghost mural, painted directly on building. Building is protected with green graffiti coat before it is painted.



Examples of Ghost Murals



SIGNAGE LIST		
#	Name	Location
5	East Mural	East facing side of 561 Windsor